

SUBDIVISION PLAN OF LOT 2, AND PART OF LOT 8, ALL IN DISTRICT LOT 751, CARIBOO DISTRICT, PLAN 24996.

PLAN EPP80803

PURSUANT TO SECTION 67 OF THE LAND TITLE ACT.
 INTEGRATED SURVEY AREA No. 39 PRINCE GEORGE, BC, NAD83 (CSRS) 4.0.0.BC.1
 BCGS 93G.087



THE INTENDED PLOT SIZE OF THIS PLAN IS 560mm IN WIDTH BY 432mm IN HEIGHT (C SIZE) WHEN PLOTTED AT A SCALE OF 1:1000.

ALL DISTANCES ARE IN METRES AND DECIMALS THEREOF.

GRID BEARINGS ARE DERIVED FROM OBSERVATIONS BETWEEN GEODETIC CONTROL MONUMENTS 86H1724 AND 86H1833.

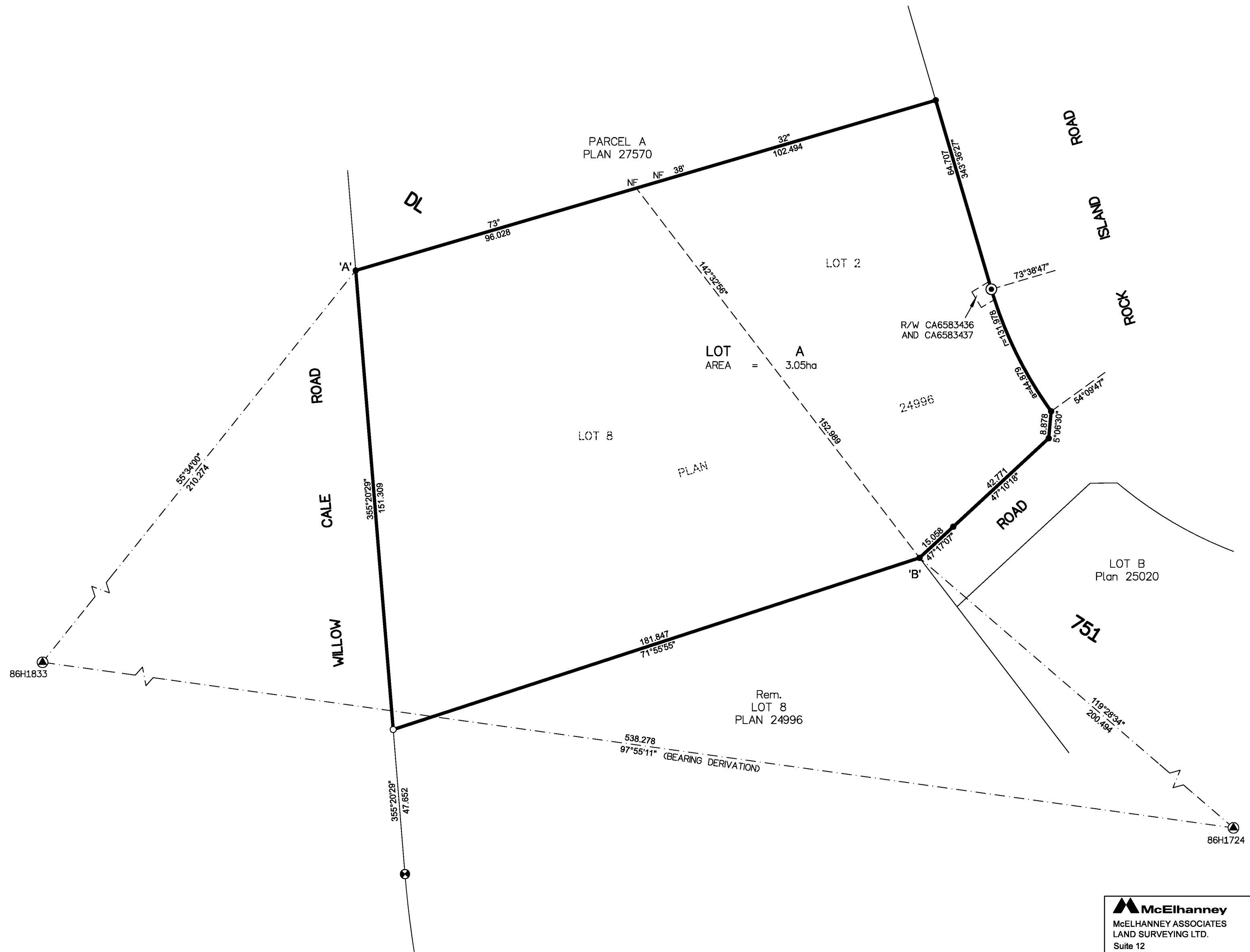
THE UTM COORDINATES AND ESTIMATED HORIZONTAL POSITIONAL ACCURACY ACHIEVED HAVE BEEN DERIVED FROM MASCOT PUBLISHED COORDINATES AND STANDARD DEVIATIONS FOR GEODETIC CONTROL MONUMENT 86H1724.

THIS PLAN SHOWS HORIZONTAL GROUND-LEVEL DISTANCES UNLESS OTHERWISE SPECIFIED. TO COMPUTE GRID DISTANCES, MULTIPLY GROUND-LEVEL DISTANCES BY THE COMBINED FACTOR OF 0.9995137 WHICH HAS BEEN DERIVED FROM GEODETIC CONTROL MONUMENT 86H1724.

LEGEND

SYMBOLS		DESCRIPTION
FOUND	PLACED	
		CONTROL MONUMENT
		STANDARD CAPPED POST
		STANDARD IRON POST
		STANDARD CONCRETE POST
CSF		COMBINED SCALE FACTOR
EHPA		ESTIMATED HORIZONTAL POSITIONAL ACCURACY

GEOREFERENCING POSITIONS				
UTM COORDINATES, ZONE 10, NAD 83 (CSRS), 4.0.0.BC.1				
STATION	NORTHING	EASTING	EHPA	CSF
Fd.IP 'A'	5965362.53	517213.03	0.15	0.9995142
Fd.IP 'B'	5965268.17	517398.11	0.15	0.9995139



THIS PLAN LIES WITHIN THE JURISDICTION OF THE APPROVING OFFICER FOR THE CITY OF PRINCE GEORGE.

THE FIELD SURVEY REPRESENTED BY THIS PLAN WAS COMPLETED ON THE 21st DAY OF FEBRUARY, 2018
 SHAUNA C. GOERTZEN, BCLS 798

THIS PLAN LIES WITHIN THE REGIONAL DISTRICT OF FRASER-FORT GEORGE.

McElhanney
 McELHANNEY ASSOCIATES
 LAND SURVEYING LTD.
 Suite 12
 556 North Nechako Road
 Prince George BC
 Canada V2K 1A1
 Tel 250 561 2229

File No. 2341-6639-S