

**REFERENCE PLAN OVER PART OF LOT A,
DISTRICT LOT 4051, CARIBOO DISTRICT,
PLAN BCP20972**

PLAN EPP80376

PURSUANT TO SECTION 99(1)(e) OF THE LAND TITLE ACT.
FOR EASEMENT PURPOSES

INTEGRATED SURVEY AREA No. 39 PRINCE GEORGE, BC, NAD83 (CSRS) 4.0.0.BC.1

BCGS 93G.096



THE INTENDED PLOT SIZE OF THIS PLAN IS 560mm IN WIDTH BY 432mm IN HEIGHT (C SIZE) WHEN PLOTTED AT A SCALE OF 1:750.

ALL DISTANCES ARE IN METRES AND DECIMALS THEREOF.

GRID BEARINGS ARE DERIVED FROM OBSERVATIONS BETWEEN GEODETIC CONTROL MONUMENTS 86H1759 AND 86H1775.

THE UTM COORDINATES AND ESTIMATED HORIZONTAL POSITIONAL ACCURACY ACHIEVED HAVE BEEN DERIVED FROM MASCOT PUBLISHED COORDINATES AND STANDARD DEVIATIONS FOR GEODETIC CONTROL MONUMENTS 86H1759 AND 86H1775.

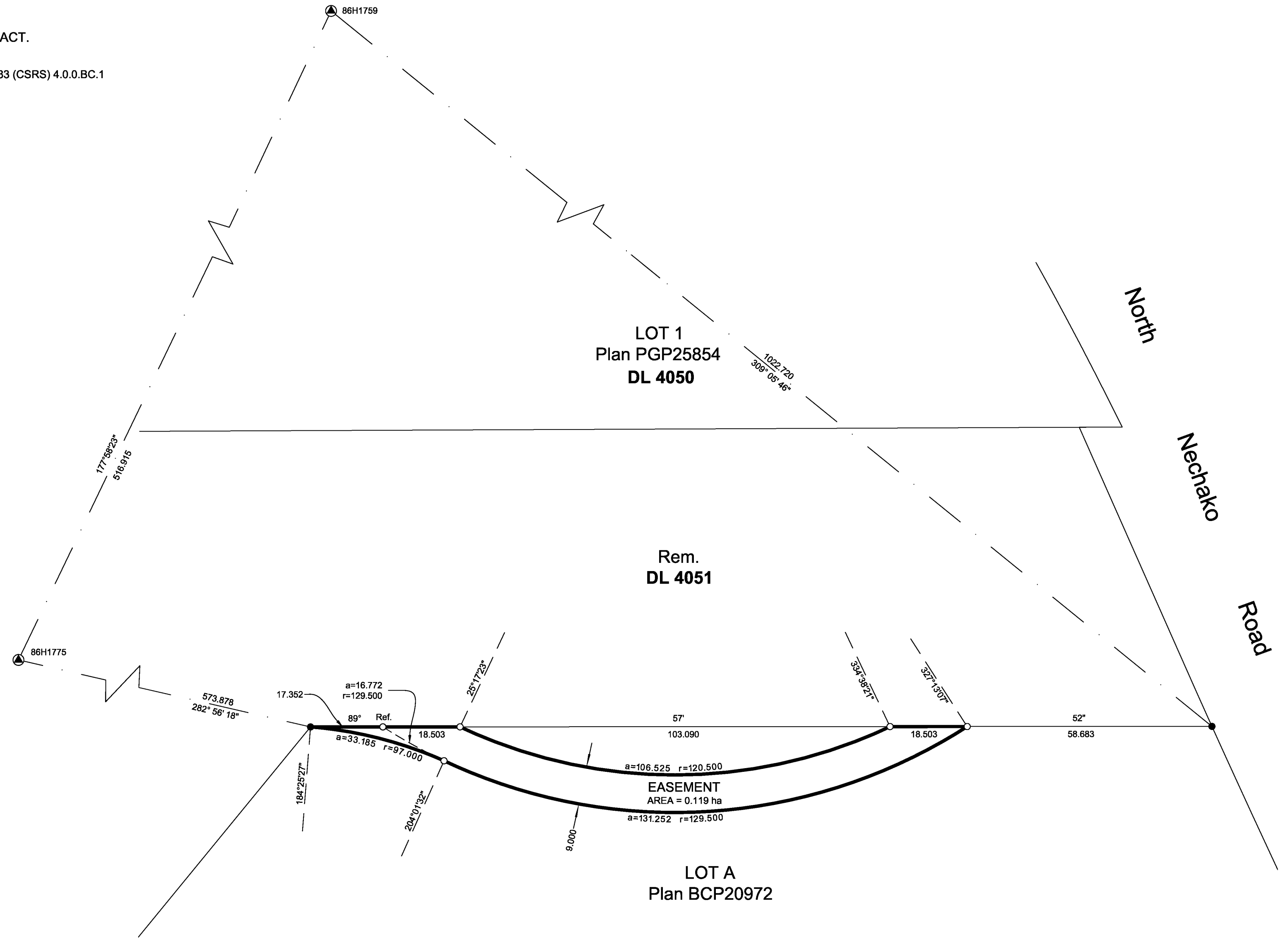
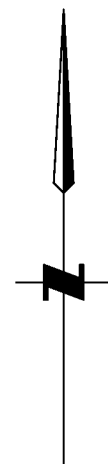
THIS PLAN SHOWS HORIZONTAL GROUND-LEVEL DISTANCES UNLESS OTHERWISE SPECIFIED. TO COMPUTE GRID DISTANCES, MULTIPLY GROUND-LEVEL DISTANCES BY THE AVERAGE COMBINED FACTOR OF 0.9995086 WHICH HAS BEEN DERIVED FROM CONTROL MONUMENT 86H1759.

LEGEND

SYMBOLS		DESCRIPTION
FOUND	PLACED	
		CONTROL MONUMENT
		STANDARD IRON POST
	CSF	COMBINED SCALE FACTOR
	EHPA	ESTIMATED HORIZONTAL POSITIONAL ACCURACY

GEOREFERENCING POSITIONS				
UTM COORDINATES, ZONE 10, NAD 83 (CSRS), 4.0.0.BC.1				
STATION	NORTHING	EASTING	EHPA	CSF
86H1759	5978861.42	512201.26	0.05	0.9995086
86H1775	5978345.08	512219.53	0.05	0.9995090

BOOK OF REFERENCE		
DESCRIPTION	PID	AREA (ha)
Lot A, District Lot 4051, Plan BCP20972	026-498-120	0.119



THE FIELD SURVEY REPRESENTED BY THIS PLAN WAS COMPLETED ON THE 16TH DAY OF FEBRUARY, 2018

ALBERT KOEHLER, BCLS 974

THIS PLAN LIES WITHIN THE REGIONAL DISTRICT OF FRASER-FORT GEORGE.

FILE: 18009 - EASEMENT
KOEHLER LAND SURVEYING INC. 201 - 1396 5th AVENUE PRINCE GEORGE, BC V2L 3L4 TEL: (250) 614-9703