

PLAN EPP78700

**SUBDIVISION PLAN OF LOT 12, PLAN EPP52840 AND PART OF LOT 3, PLAN BCP22263, ALL IN DISTRICT LOT 2003, CARIBOO DISTRICT.**

PURSUANT TO SECTION 67 OF THE LAND TITLE ACT

INTEGRATED SURVEY AREA No. 39 PRINCE GEORGE, BC, NAD83 (CSRS) 4.0.0.BC.1

BCGS 93G.087



THE INTENDED PLOT SIZE OF THIS PLAN IS 560mm IN WIDTH BY 432mm IN HEIGHT (C SIZE) WHEN PLOTTED AT A SCALE OF 1:400.

ALL DISTANCES ARE IN METRES AND DECIMALS THEREOF.

GRID BEARINGS ARE DERIVED FROM OBSERVATIONS BETWEEN GEODETIC CONTROL MONUMENTS 86H1484 AND 86H1561.

THE UTM COORDINATES AND ESTIMATED HORIZONTAL POSITIONAL ACCURACY ACHIEVED HAVE BEEN DERIVED FROM MASCOT PUBLISHED COORDINATES AND STANDARD DEVIATIONS FOR GEODETIC CONTROL MONUMENT 86H1484.

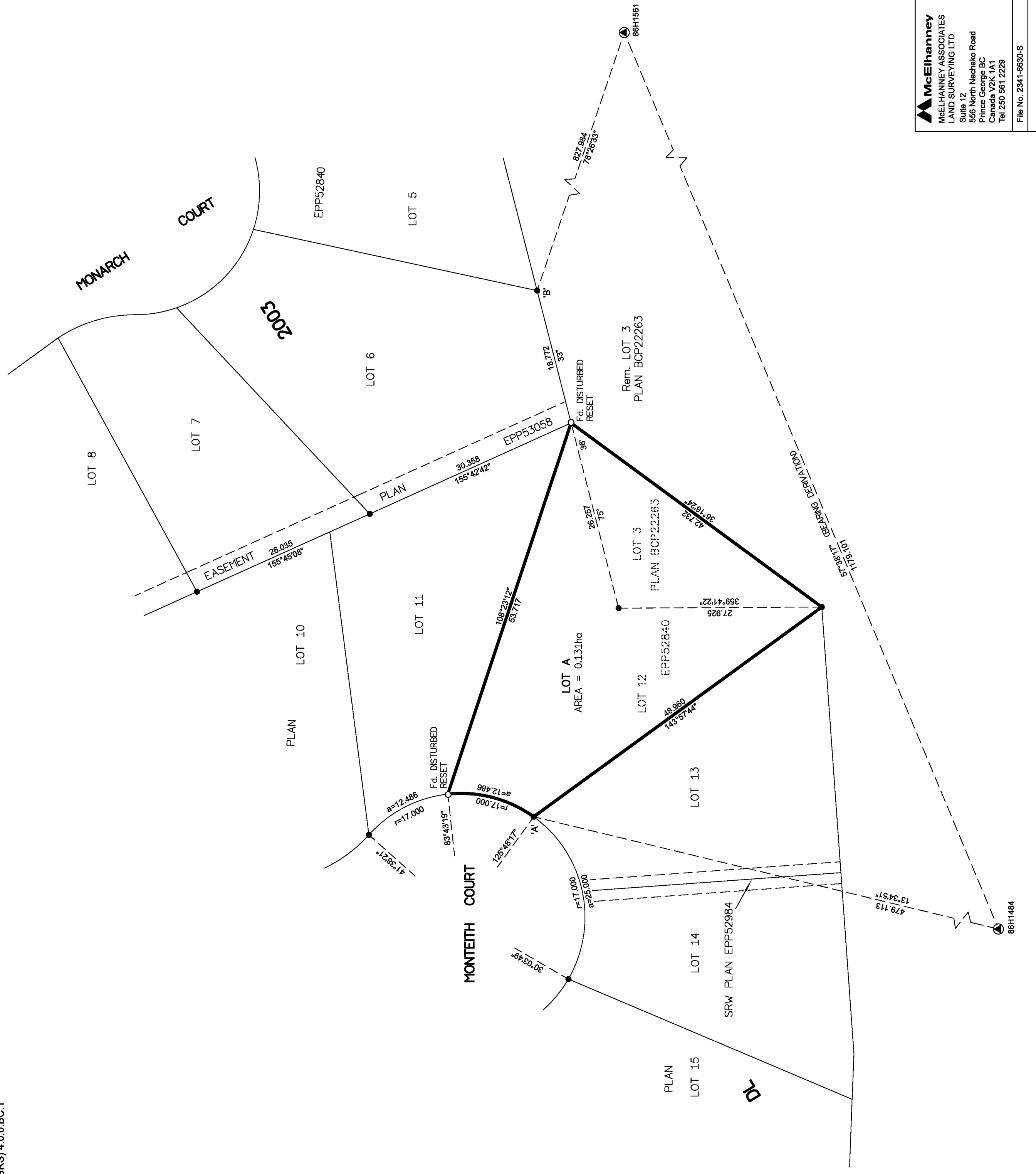
THIS PLAN SHOWS HORIZONTAL GROUND-LEVEL DISTANCES UNLESS OTHERWISE SPECIFIED. TO COMPUTE GRID DISTANCES, MULTIPLY GROUND-LEVEL DISTANCES BY THE COMBINED FACTOR OF 0.9994986 WHICH HAS BEEN DERIVED FROM GEODETIC CONTROL MONUMENT 86H1484.

**LEGEND**

**SYMBOLS FOUND**

- CONTROL MONUMENT
- STANDARD IRON POST
- CSF COMBINED SCALE FACTOR
- EHPA ESTIMATED HORIZONTAL POSITIONAL ACCURACY

| GEOREFERENCING POSITIONS                            |            |           |           |
|---|------------|-----------|-----------|
| UTM COORDINATES, ZONE 10, NAD 83 (CSRS), 4.0.0.BC.1 |            |           |           |
| STATION   | NORTHING   | EASTING   | CSF       |
| Fd. IP 'A'  | 5968725.78 | 514012.01 | 0.12      |
| Fd. IP 'B'  | 5968725.31 | 514094.24 | 0.12      |
|   |            |           | 0.9995000 |



**McElhanney**  
 McELHANNEY ASSOCIATES  
 LAND SURVEYING LTD.  
 Suite 12  
 556 North Nechako Road  
 Prince George BC  
 Canada V2K 1A1  
 Tel 250 561 2229  
 File No. 2341-6630-S

THIS PLAN LIES WITHIN THE JURISDICTION OF THE APPROVING OFFICER FOR THE CITY OF PRINCE GEORGE.  
 THE FIELD SURVEY REPRESENTED BY THIS PLAN WAS COMPLETED ON THE 28th DAY OF NOVEMBER, 2017  
 SHAUNA C. GOERTZEN, BCLS 798  
 THIS PLAN LIES WITHIN THE REGIONAL DISTRICT OF FRASER-FORT GEORGE.