

**REFERENCE PLAN OF CONSOLIDATION OF LOT 1,  
PLAN PGP44410 AND CLOSED PATHWAY SHOWN  
ON PLAN EPP77988, ALL IN DISTRICT LOT 3050,  
CARIBOO DISTRICT.**

**PLAN EPP77989**

PURSUANT TO SECTION 100(1)(b) OF THE LAND TITLE ACT .

INTEGRATED SURVEY AREA No. 39 PRINCE GEORGE, BC, NAD83 (CSRS) 4.0.0.BC.1

BCGS 93G.097



THE INTENDED PLOT SIZE OF THIS PLAN IS 560mm IN WIDTH BY 432mm IN HEIGHT (C SIZE) WHEN PLOTTED AT A SCALE OF 1:750.

ALL DISTANCES ARE IN METRES AND DECIMALS THEREOF.

GRID BEARINGS ARE DERIVED FROM OBSERVATIONS BETWEEN GEODETIC CONTROL MONUMENTS 86H1809 AND 86H1759.

THE UTM COORDINATES AND ESTIMATED HORIZONTAL POSITIONAL ACCURACY ACHIEVED HAVE BEEN DERIVED FROM MASCOT PUBLISHED COORDINATES AND STANDARD DEVIATIONS FOR GEODETIC CONTROL MONUMENT 86H1759

THIS PLAN SHOWS HORIZONTAL GROUND-LEVEL DISTANCES UNLESS OTHERWISE SPECIFIED. TO COMPUTE GRID DISTANCES, MULTIPLY GROUND-LEVEL DISTANCES BY THE AVERAGE COMBINED FACTOR OF 0.9995087 WHICH HAS BEEN DERIVED FROM GEODETIC CONTROL MONUMENTS 86H1809 AND 86H1759.

NOTE:  
THIS PLAN SHOWS ONE OR MORE WITNESS POSTS WHICH ARE NOT SET ON THE TRUE CORNER(S).

**LEGEND**

SYMBOLS		DESCRIPTION
FOUND	PLACED	
		CONTROL MONUMENT
		STANDARD IRON POST
	CSF	COMBINED SCALE FACTOR
	EHPA	ESTIMATED HORIZONTAL POSITIONAL ACCURACY



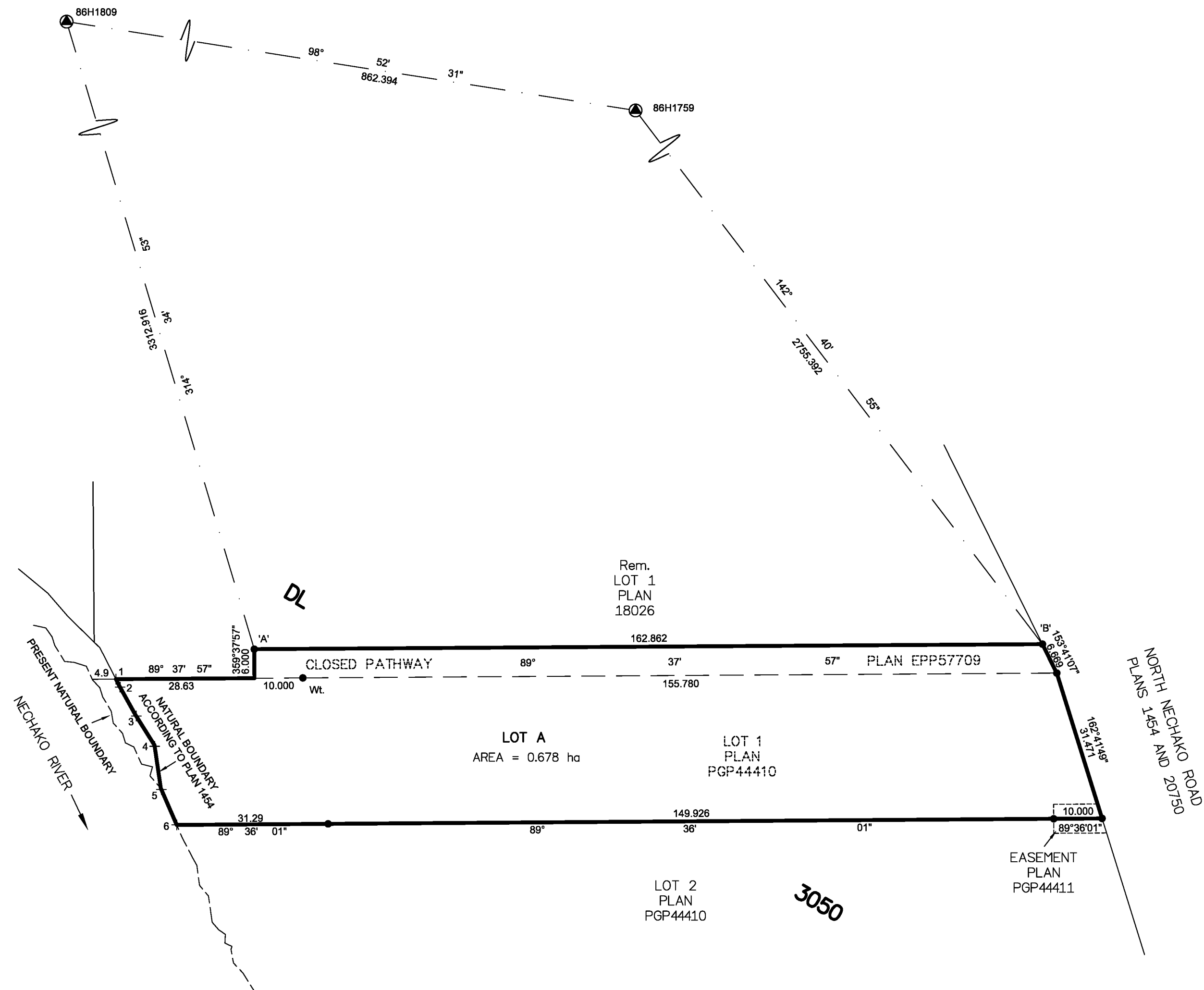
NATURAL BOUNDARY NECHAKO RIVER		
UTM COORDINATES, ZONE 10, NAD 83 (CSRS), 4.0.0.BC.1		
STATION	NORTHING	EASTING
1	5976663.96	513679.51
2	5976662.33	513680.34
3	5976656.62	513683.52
4	5976650.30	513687.48
5	5976641.40	513688.78
6	5976633.84	513692.06

GEOREFERENCING POSITIONS				
UTM COORDINATES, ZONE 10, NAD 83 (CSRS), 4.0.0.BC.1				
STATION	NORTHING	EASTING	EHPA	CSF
Fd.IP'A'	5976670.14	513708.09	0.10	0.9995120
Fd.IP'B'	5976671.18	513870.86	0.10	0.9995120

THE ASSOCIATION OF BC LAND SURVEYORS HAS GRANTED RELIEF FROM COMPLIANCE WITH GSI RULE 5-4(2) FOR THIS SURVEY SINCE THE STANDARD DEVIATIONS OF THE ISA MONUMENTS DO NOT MEET THE REQUIREMENTS OF SAID RULE.

THE FIELD SURVEY REPRESENTED BY THIS PLAN WAS COMPLETED ON THE 14th DAY OF NOVEMBER, 2017  
SHAUNA C. GOERTZEN, BCLS 798

THIS PLAN LIES WITHIN THE REGIONAL DISTRICT OF FRASER-FORT GEORGE.



**McElhanney**  
 McELHANNEY ASSOCIATES  
 LAND SURVEYING LTD.  
 Suite 12  
 556 North Nechako Road  
 Prince George BC  
 Canada V2K 1A1  
 Tel 250 561 2229

File No. 2342-6151-CON