

**REFERENCE PLAN TO ACCOMPANY ROAD CLOSURE
BY-LAW No. 8842 (PRINCE GEORGE), TO CLOSE PATHWAY
SHOWN DEDICATED ON PLAN EPP57709, DISTRICT LOT 3050,
CARIBOO DISTRICT.**

PLAN EPP77988

PURSUANT TO SECTION 120 OF THE LAND TITLE ACT AND SECTION 40
OF THE COMMUNITY CHARTER.

INTEGRATED SURVEY AREA No. 39 PRINCE GEORGE, BC, NAD83 (CSRS) 4.0.0.BC.1
BCGS 93G.097



THE INTENDED PLOT SIZE OF THIS PLAN IS 560mm IN WIDTH BY 432mm IN
HEIGHT (C SIZE) WHEN PLOTTED AT A SCALE OF 1:750.

ALL DISTANCES ARE IN METRES AND DECIMALS THEREOF.

GRID BEARINGS ARE DERIVED FROM OBSERVATIONS BETWEEN GEODETIC
CONTROL MONUMENTS 86H1809 AND 86H1759.

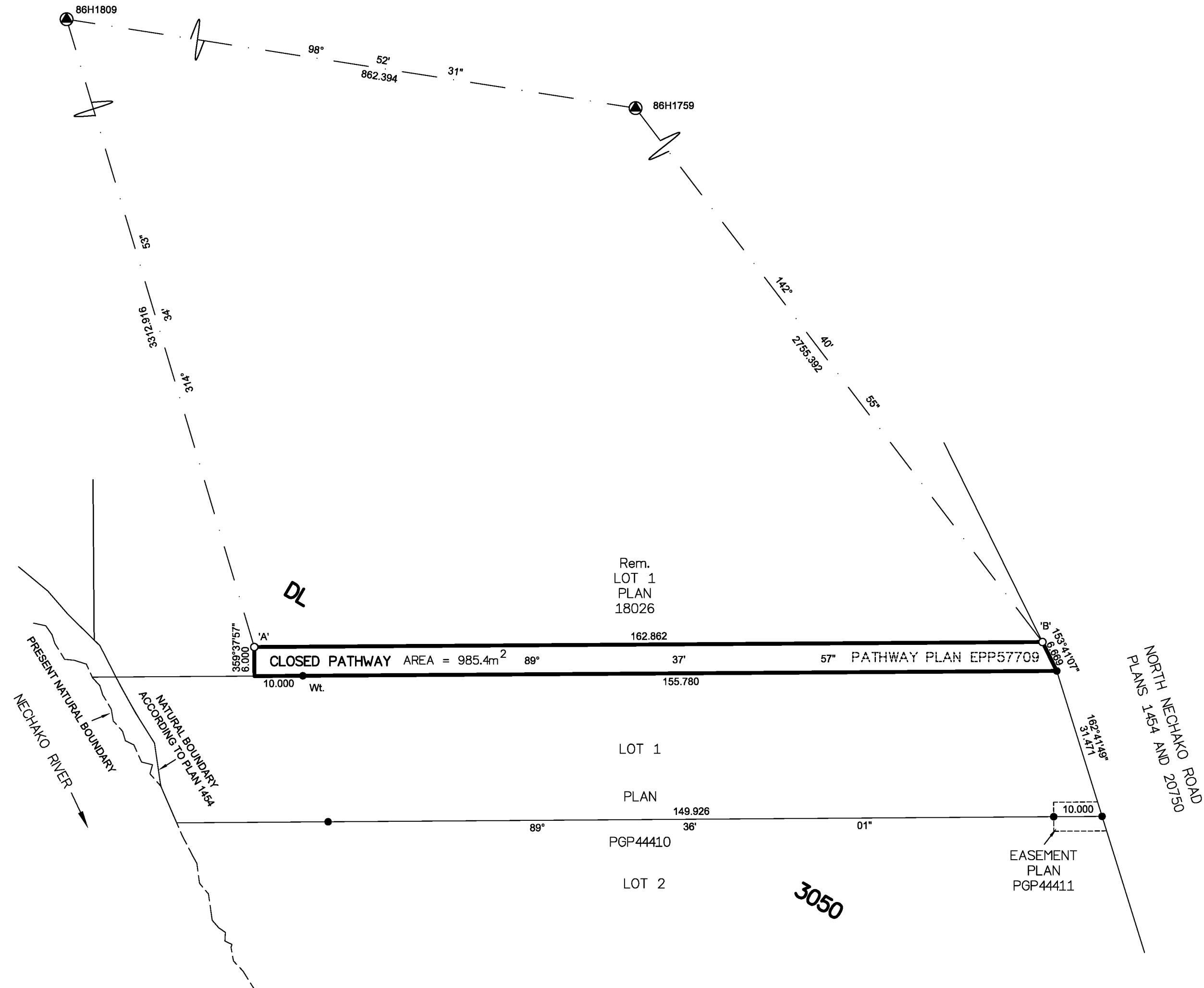
THE UTM COORDINATES AND ESTIMATED HORIZONTAL POSITIONAL
ACCURACY ACHIEVED HAVE BEEN DERIVED FROM MASCOT PUBLISHED
COORDINATES AND STANDARD DEVIATIONS FOR GEODETIC CONTROL
MONUMENT 86H1759

THIS PLAN SHOWS HORIZONTAL GROUND-LEVEL DISTANCES UNLESS
OTHERWISE SPECIFIED. TO COMPUTE GRID DISTANCES, MULTIPLY
GROUND-LEVEL DISTANCES BY THE AVERAGE COMBINED FACTOR OF
0.9995087 WHICH HAS BEEN DERIVED FROM GEODETIC CONTROL MONUMENTS
86H1809 AND 86H1759.

NOTE:
THIS PLAN SHOWS ONE OR MORE WITNESS POSTS
WHICH ARE NOT SET ON THE TRUE CORNER(S).

LEGEND

SYMBOLS		DESCRIPTION
FOUND	PLACED	
		CONTROL MONUMENT
		STANDARD IRON POST
CSF		COMBINED SCALE FACTOR
EHPA		ESTIMATED HORIZONTAL POSITIONAL ACCURACY



GEOREFERENCING POSITIONS UTM COORDINATES, ZONE 10, NAD 83 (CSRS), 4.0.0.BC.1				
STATION	NORTHING	EASTING	EHPA	CSF
PI.P'A'	5976670.14	513708.09	0.10	0.9995120
PI.P'B'	5976671.18	513870.86	0.10	0.9995120

THE ASSOCIATION OF BC LAND SURVEYORS HAS GRANTED RELIEF FROM
COMPLIANCE WITH GSI RULE 5-4(2) FOR THIS SURVEY SINCE THE STANDARD
DEVIATIONS OF THE ISA MONUMENTS DO NOT MEET THE REQUIREMENTS OF
SAID RULE.

THE FIELD SURVEY REPRESENTED BY THIS PLAN WAS COMPLETED
ON THE 14th DAY OF NOVEMBER, 2017
SHAUNA C. GOERTZEN, BCLS 798

THIS PLAN LIES WITHIN THE REGIONAL DISTRICT OF FRASER-FORT GEORGE.

McElhanney
McELHANNEY ASSOCIATES
LAND SURVEYING LTD.
Suite 12
556 North Nechako Road
Prince George BC
Canada V2K 1A1
Tel 250 561 2229

File No. 2342-6151-RC