

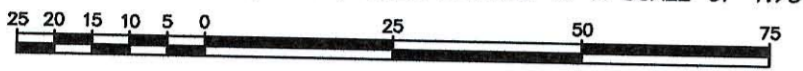
3 COPIES
CITY OF PRINCE GEORGE

REFERENCE PLAN OF EASEMENT OVER PART OF LOT B, DL 2507, CARIBOO DISTRICT, PLAN PGP46838.

PLAN EPP7792

BCGS 93G.097
PURSUANT TO SECTION 99(1)(e) OF THE LAND TITLE ACT.

THE INTENDED PLOT SIZE OF THIS PLAN IS 560mm IN WIDTH BY 432mm IN HEIGHT (C SIZE) WHEN PLOTTED AT A SCALE OF 1:750



ALL LINEAR MEASUREMENTS ARE SHOWN AS HORIZONTAL GROUND-LEVEL DISTANCES IN METRES AND DECIMALS THEREOF, UNLESS OTHERWISE INDICATED.

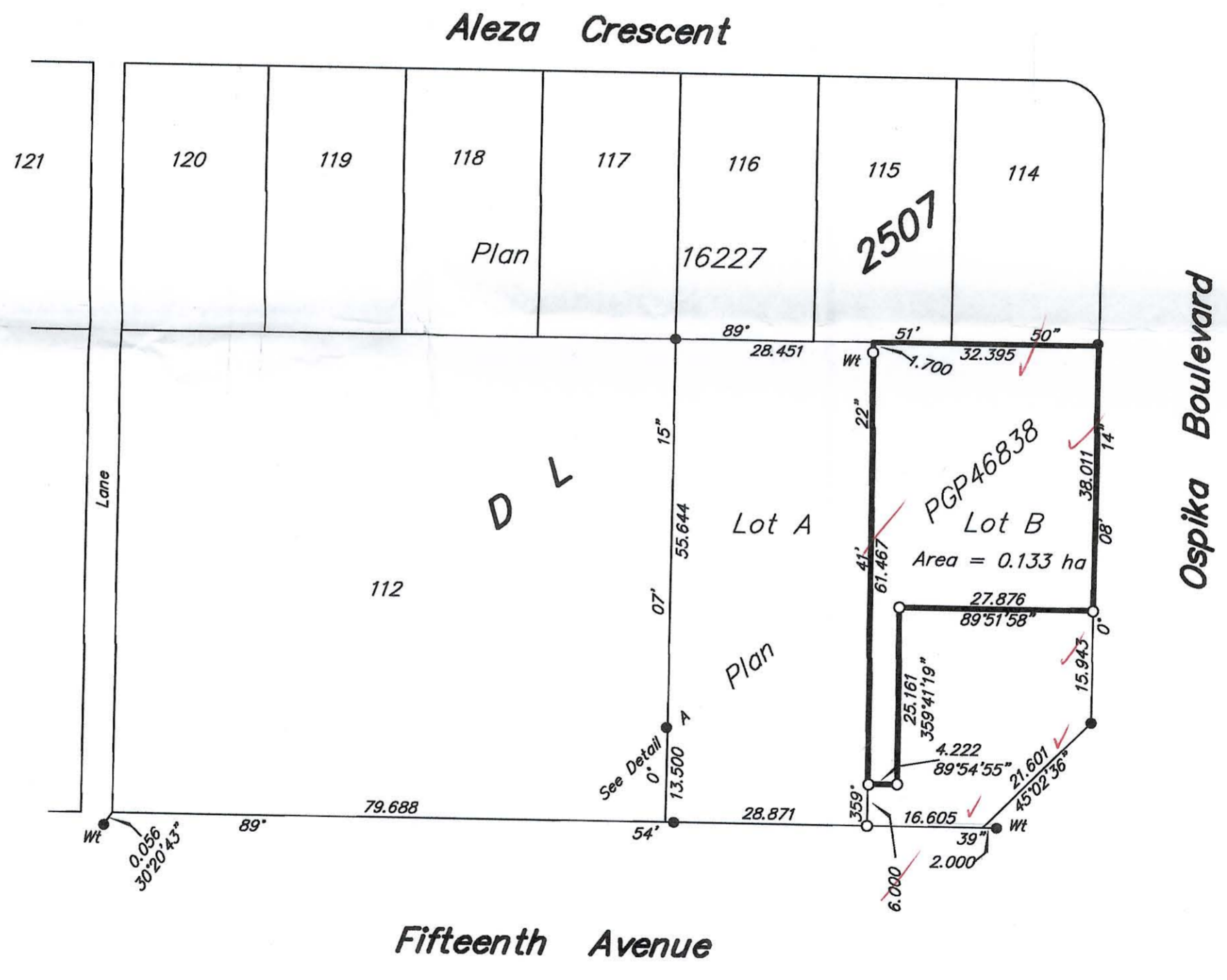
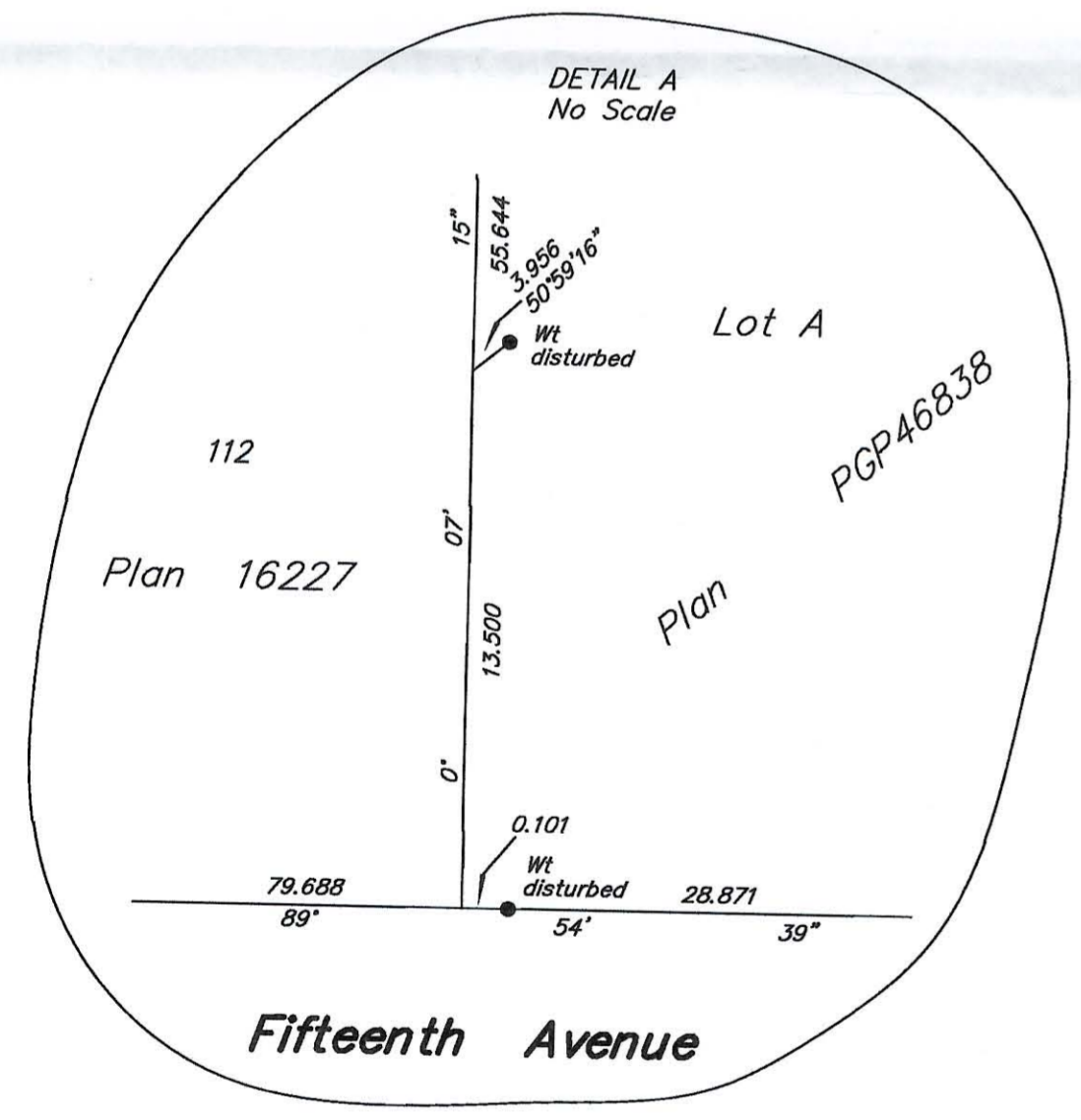
LEGEND

BEARINGS ARE GRID, DERIVED FROM PREVIOUSLY INTEGRATED PLAN PGP46838. THIS PLAN LIES WITHIN INTEGRATED SURVEY AREA NO. 39 PRINCE GEORGE (NAD83 CSRS).

- DENOTES STANDARD IRON POST FOUND
- DENOTES STANDARD IRON POST PLACED


NOTE

THIS PLAN SHOWS ONE OR MORE WITNESS POSTS WHICH ARE SET ALONG THE PRODUCTION OF THE PROPERTY BOUNDARY UNLESS OTHERWISE NOTED.



THE FIELD SURVEY REPRESENTED BY THIS PLAN WAS COMPLETED BY DALE KEOWN, BCLS ON THE 12th DAY OF JULY, 2010.

THIS PLAN LIES WITHIN THE REGIONAL DISTRICT OF FRASER - FORT GEORGE.

 McElhanney McElhanney Associates Land Surveying Ltd. Prince George, B.C. Ph: (250) 561-2229 Fax: 563-1941		
DL - 8180	File No. - 5837 task 2000	DWG EASEMENT