

EXPLANATORY PLAN OF EASEMENT OVER PARTS OF LOTS 1 AND 2, DISTRICT LOT 2424, CARIBOO DISTRICT, PLAN EPP77320.

PLAN EPP77321

PURSUANT TO SECTION 99(1)(e) OF THE LAND TITLE ACT.
FOR EASEMENT PURPOSES

INTEGRATED SURVEY AREA No. 39 PRINCE GEORGE, BC, NAD83 (CSRS) 4.0.0.BC.1
BCGS 093J.006



THE INTENDED PLOT SIZE OF THIS PLAN IS 432 mm IN WIDTH BY 280 mm IN HEIGHT (B SIZE) WHEN PLOTTED AT A SCALE OF 1:250.

ALL DISTANCES ARE IN METRES AND DECIMALS THEREOF.

GRID BEARINGS ARE DERIVED FROM PREVIOUSLY INTEGRATED PLAN EPP77320.

THIS PLAN SHOWS HORIZONTAL GROUND-LEVEL DISTANCES UNLESS OTHERWISE SPECIFIED. TO COMPUTE GRID DISTANCES, MULTIPLY GROUND-LEVEL DISTANCES BY THE AVERAGE COMBINED FACTOR OF 0.9994864 WHICH HAS BEEN DERIVED FROM PLAN EPP77320.

THE UTM COORDINATES AND ESTIMATED HORIZONTAL POSITIONAL ACCURACY ACHIEVED HAVE BEEN DERIVED FROM PLAN EPP77320.

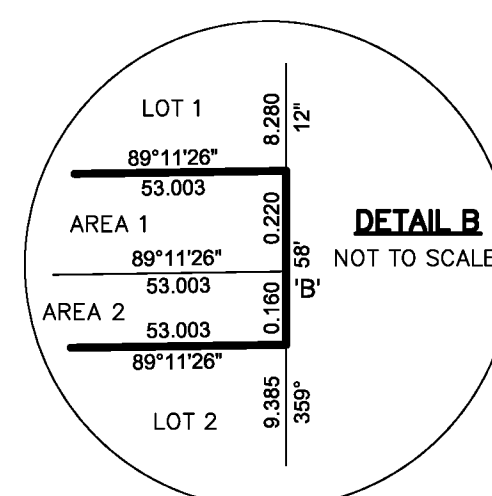
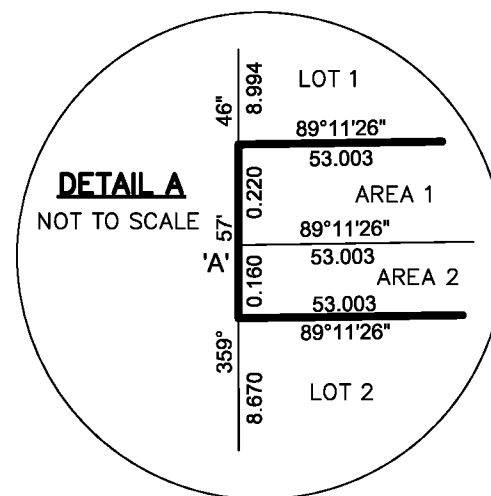
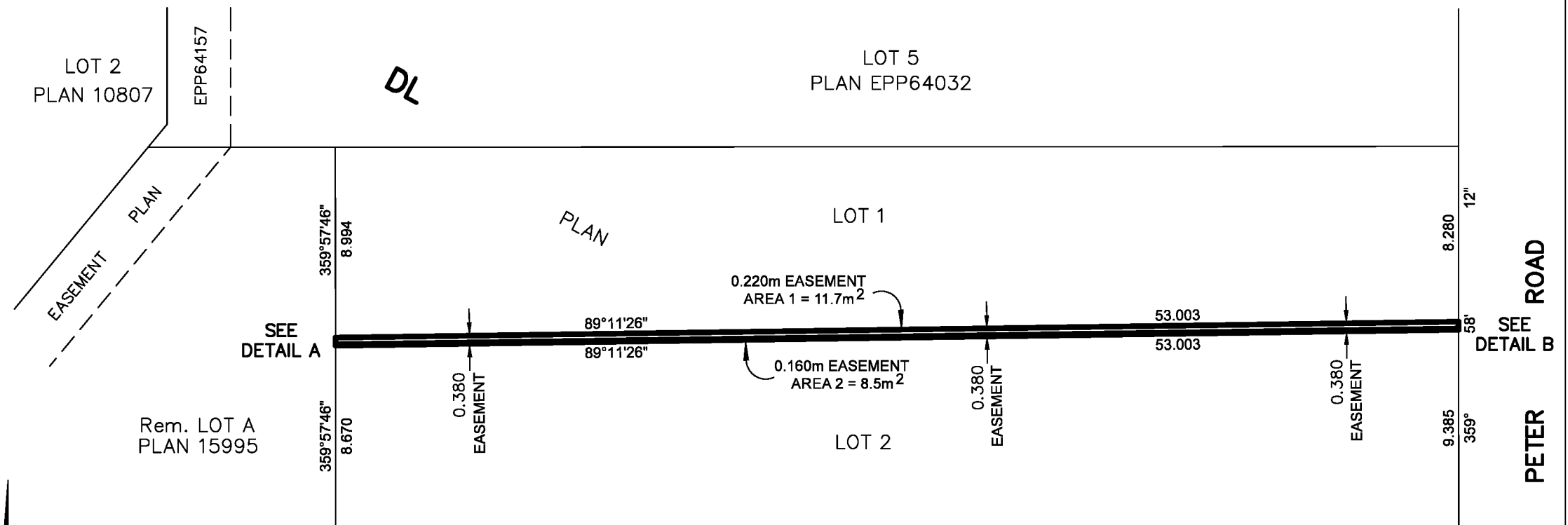
GEOREFERENCING POSITIONS UTM COORDINATES, ZONE 10, NAD 83 (CSRS), 4.0.0.BC.1				
STATION	NORTHING	EASTING	EHPA	CSF
'A'	5984161.10	512826.54	0.10	0.9994859
'B'	5984161.84	512879.51	0.10	0.9994859

BOOK OF REFERENCE	
DESCRIPTION	AREA REQUIRED
LOT 1, DISTRICT LOT 2424, PLAN EPP77320	AREA 1=11.7 m ²
LOT 2, DISTRICT LOT 2424, PLAN EPP77320	AREA 2= 8.5 m ²
TOTAL	20.2 m ²

THIS PLAN IS BASED ON THE FOLLOWING
LAND TITLE AND SURVEY AUTHORITY OF BC RECORDS:
PLAN EPP77320

SHAUNA C. GOERTZEN, BCLS 798
27th DAY OF OCTOBER, 2017

THIS PLAN LIES WITHIN THE REGIONAL DISTRICT OF FRASER-FORT GEORGE.



2424
EPP77320

McElhanney
McELHANNEY ASSOCIATES
LAND SURVEYING LTD.
Suite 12
556 North Nechako Road
Prince George BC
Canada V2K 1A1
Tel 250 561 2229

File No. 2341-6464-E-P2