

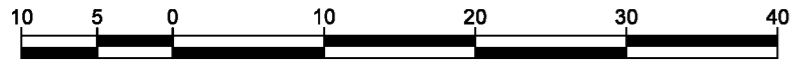
SUBDIVISION PLAN OF PART OF LOT A, DISTRICT LOT 2424, CARIBOO DISTRICT, PLAN 15995, EXCEPT PLAN EPP64032.

PLAN EPP77320

PURSUANT TO SECTION 67 OF LAND TITLE ACT

INTEGRATED SURVEY AREA No. 39 PRINCE GEORGE, BC, 4.0.0.BC.1

BCGS 093J.006



THE INTENDED PLOT SIZE OF THIS PLAN IS 560 mm IN WIDTH BY 432 mm IN HEIGHT (C SIZE) WHEN PLOTTED AT A SCALE OF 1:500.

ALL DISTANCES ARE IN METRES AND DECIMALS THEREOF.

GRID BEARINGS ARE DERIVED FROM OBSERVATIONS BETWEEN GEODETIC CONTROL MONUMENTS 86H1803 AND 86H1704.

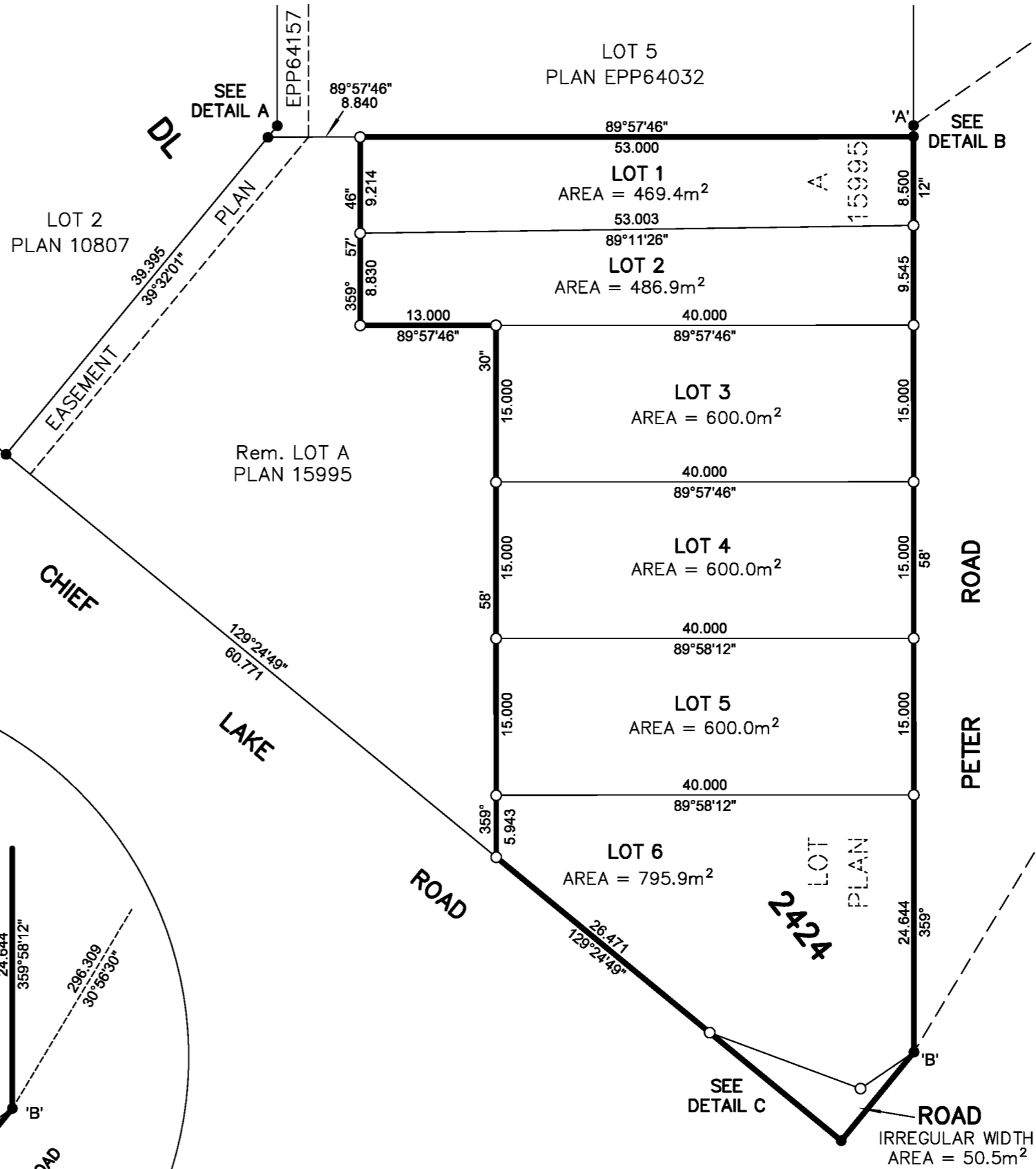
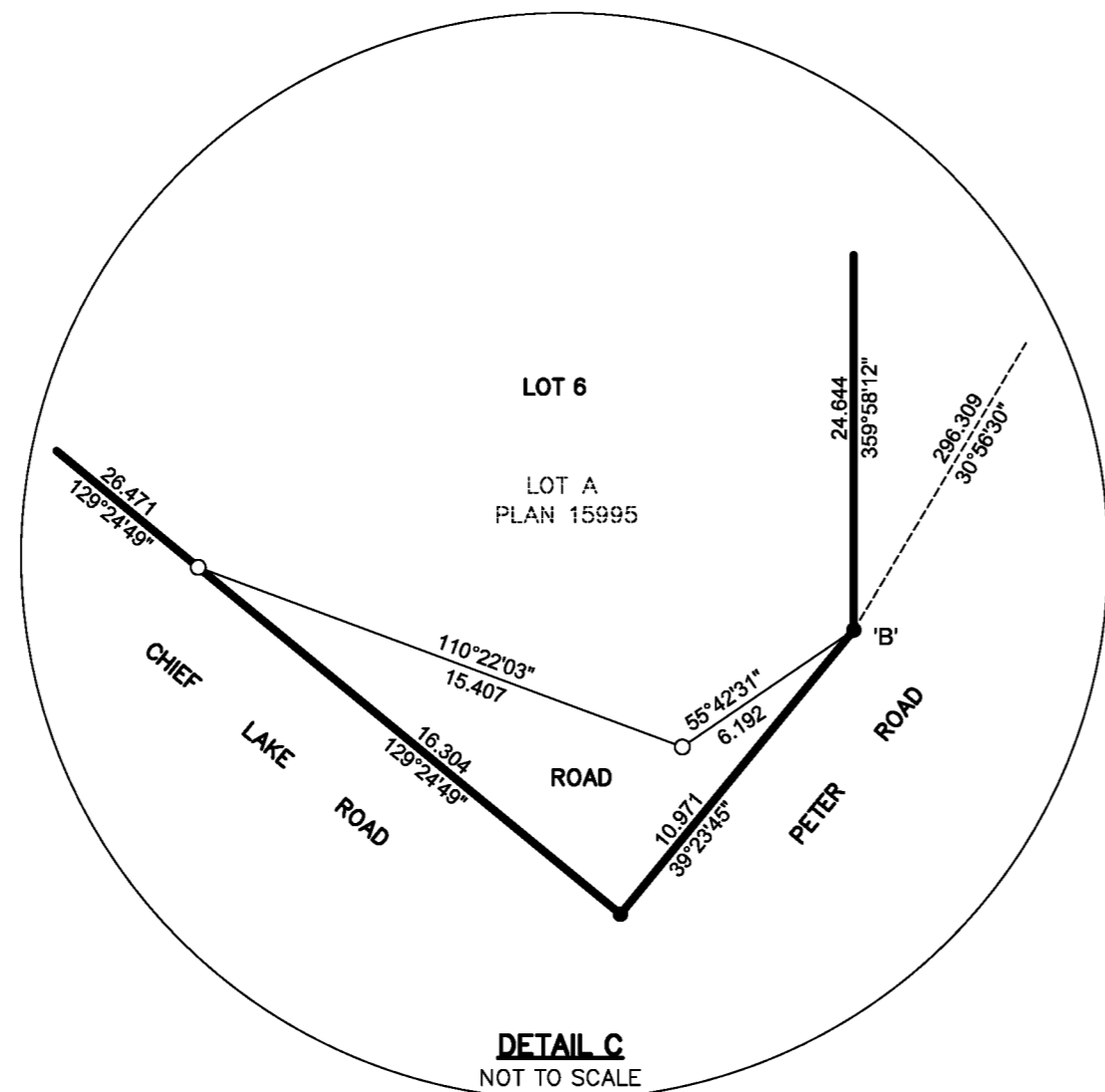
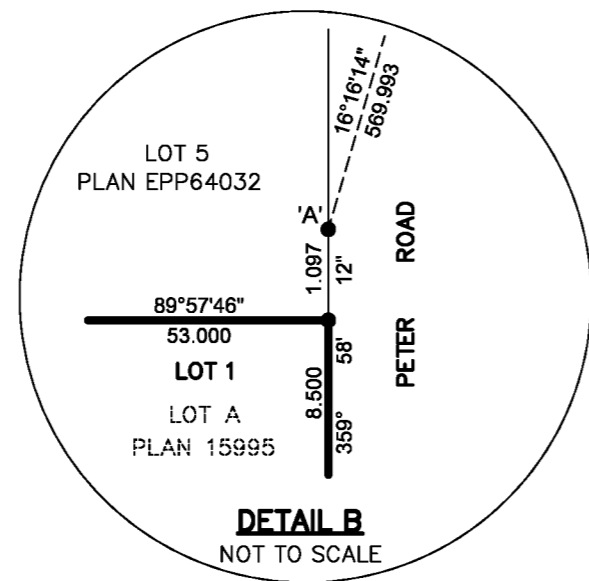
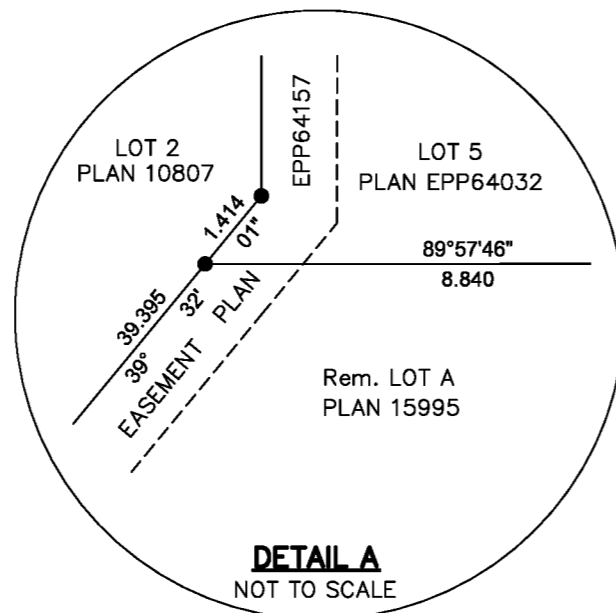
THIS PLAN SHOWS HORIZONTAL GROUND-LEVEL DISTANCES UNLESS OTHERWISE SPECIFIED. TO COMPUTE GRID DISTANCES, MULTIPLY GROUND-LEVEL DISTANCES BY THE AVERAGE COMBINED FACTOR OF 0.9994864 WHICH HAS BEEN DERIVED FROM GEODETIC CONTROL MONUMENTS 86H1803 AND 86H1704.

THE UTM COORDINATES AND ESTIMATED HORIZONTAL POSITIONAL ACCURACY ACHIEVED HAVE BEEN DERIVED FROM MASCOT PUBLISHED COORDINATES AND STANDARD DEVIATIONS FOR GEODETIC CONTROL MONUMENT 86H1704.

LEGEND

SYMBOLS	DESCRIPTION
FOUND	PLACED
	CONTROL MONUMENT
	STANDARD IRON POST
CSF	COMBINED SCALE FACTOR
EHPA	ESTIMATED HORIZONTAL POSITIONAL ACCURACY

GEOREFERENCING POSITIONS UTM COORDINATES, ZONE 10, NAD 83 (CSRS), 4.0.0.BC.1				
STATION	NORTHING	EASTING	EHPA	CSF
Fd. IP 'A'	5984171.43	512879.51	0.10	0.9994859
Fd. IP 'B'	5984082.69	512879.55	0.10	0.9994859



THE ASSOCIATION OF BC LAND SURVEYORS HAS GRANTED RELIEF FROM COMPLIANCE WITH GSI RULE 5-4(2) FOR THIS SURVEY SINCE THE STANDARD DEVIATIONS OF THE ISA MONUMENTS DO NOT MEET THE REQUIREMENTS OF SAID RULE.

THIS PLAN LIES WITHIN THE JURISDICTION OF THE APPROVING OFFICER FOR THE CITY OF PRINCE GEORGE.

THE FIELD SURVEY REPRESENTED BY THIS PLAN WAS COMPLETED ON THE 2nd DAY OF OCTOBER, 2017
SHAUNA C. GOERTZEN, BCLS 798

THIS PLAN LIES WITHIN THE REGIONAL DISTRICT OF FRASER-FORT GEORGE.

McElhanney
McELHANNEY ASSOCIATES
LAND SURVEYING LTD.
Suite 12
556 North Nechako Road
Prince George BC
Canada V2K 1A1
Tel 250 561 2229

File No. 2341-6464-S-P2