

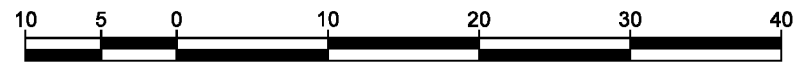
# REFERENCE PLAN TO ACCOMPANY ROAD CLOSURE, BY-LAW No. 8849 (PRINCE GEORGE), TO CLOSE ROAD DEDICATED ON PLAN 24137, DISTRICT LOT 633, CARIBOO DISTRICT.

PLAN EPP77158

PURSUANT TO SECTION 120 OF THE LAND TITLE ACT AND SECTION 40  
OF THE COMMUNITY CHARTER.

INTEGRATED SURVEY AREA No. 39 PRINCE GEORGE, BC, NAD83 (CSRS) 4.0.0.BC.1

BCGS 93G.087



THE INTENDED PLOT SIZE OF THIS PLAN IS 560mm IN WIDTH BY 432mm IN  
HEIGHT (C SIZE) WHEN PLOTTED AT A SCALE OF 1:500.

ALL DISTANCES ARE IN METRES AND DECIMALS THEREOF.

GRID BEARINGS ARE DERIVED FROM OBSERVATIONS BETWEEN GEODETIC  
CONTROL MONUMENTS 85H1279 AND 86H1834.

THE UTM COORDINATES AND ESTIMATED HORIZONTAL POSITIONAL  
ACCURACY ACHIEVED HAVE BEEN DERIVED FROM MASCOT PUBLISHED  
COORDINATES AND STANDARD DEVIATIONS FOR GEODETIC CONTROL  
MONUMENT 85H1279.

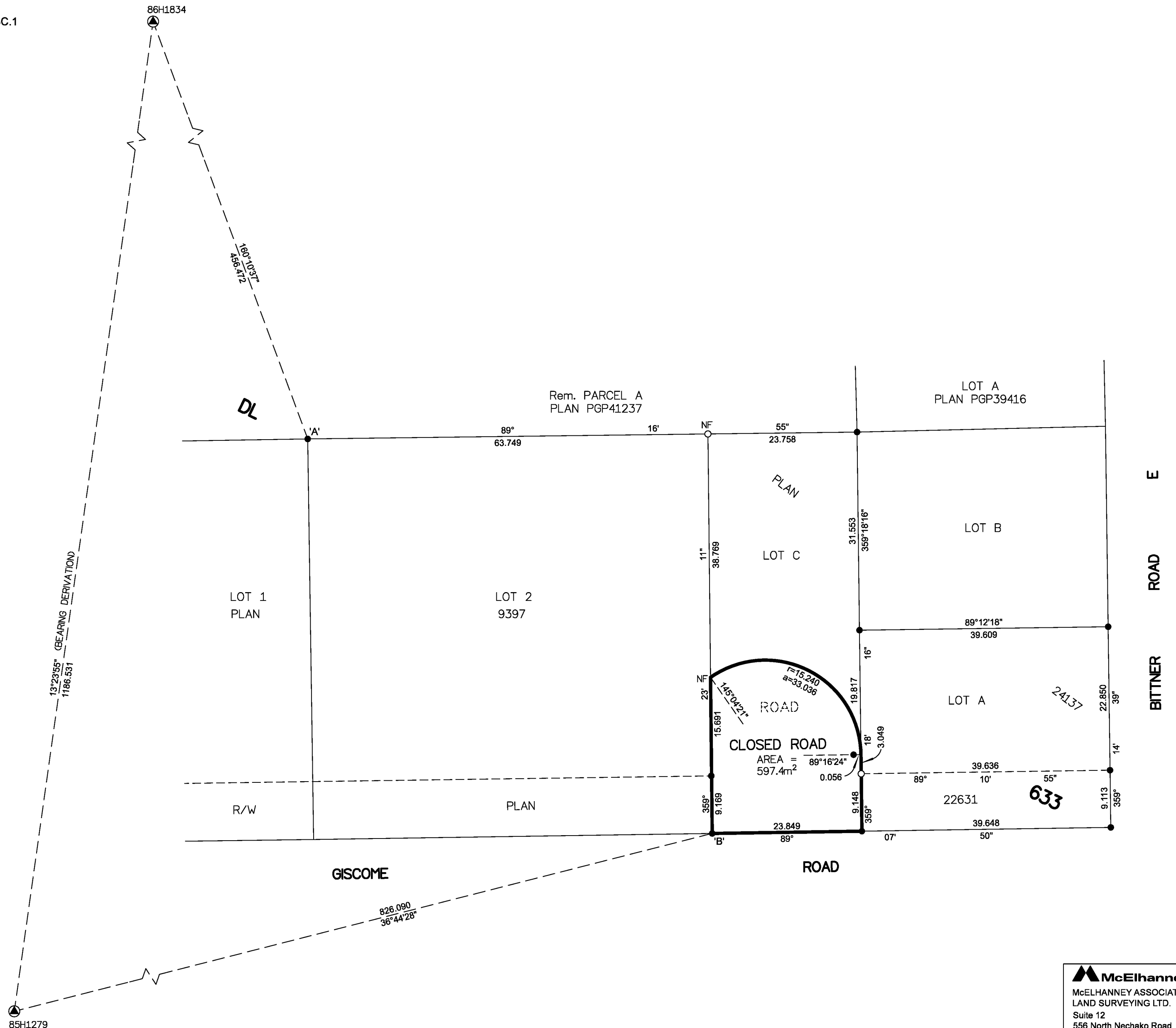
THIS PLAN SHOWS HORIZONTAL GROUND-LEVEL DISTANCES UNLESS  
OTHERWISE SPECIFIED. TO COMPUTE GRID DISTANCES, MULTIPLY  
GROUND-LEVEL DISTANCES BY THE AVERAGE COMBINED FACTOR OF  
0.9995033 WHICH HAS BEEN DERIVED FROM CONTROL MONUMENTS 85H1279  
AND 86H1834.

NOTE:  
SOME POSTS ARE EXAGGERATED FOR CLARITY.

## LEGEND

SYMBOLS	DESCRIPTION
FOUND	PLACED
	CONTROL MONUMENT
	STANDARD IRON POST
CSF	COMBINED SCALE FACTOR
EHPA	ESTIMATED HORIZONTAL POSITIONAL ACCURACY

GEOREFERENCING POSITIONS UTM COORDINATES, ZONE 10, NAD 83 (CSRS), 4.0.0.BC.1				
STATION	NORTHING	EASTING	EHPA	CSF
Fd. IP 'A'	5972354.28	524019.61	0.12	0.9995027
Fd. IP 'B'	5972291.48	524084.00	0.12	0.9995027



THE ASSOCIATION OF BC LAND SURVEYORS HAS GRANTED RELIEF FROM  
COMPLIANCE WITH GSI RULE 5-4(2) FOR THIS SURVEY SINCE THE STANDARD  
DEVIATIONS OF THE ISA MONUMENTS DO NOT MEET THE REQUIREMENTS OF  
SAID RULE.

THE FIELD SURVEY REPRESENTED BY THIS PLAN WAS COMPLETED  
ON THE 10th DAY OF OCTOBER, 2017  
SHAUNA C. GOERTZEN, BCLS 798

THIS PLAN LIES WITHIN THE REGIONAL DISTRICT OF FRASER-FORT GEORGE.

**McElhanney**  
McELHANNEY ASSOCIATES  
LAND SURVEYING LTD.  
Suite 12  
556 North Nechako Road  
Prince George BC  
Canada V2K 1A1  
Tel 250 561 2229

File No. 2341-6618-RC