

REFERENCE PLAN OF CONSOLIDATION OF LOT 6, PLAN PGP45787, AND CLOSED WALKWAY AS SHOWN ON PLAN EPP76700, BOTH IN DISTRICT LOT 1599, CARIBOO DISTRICT

PLAN EPP76701

PURSUANT TO SECTION 100(1)(b) OF THE LAND TITLE ACT.

INTEGRATED SURVEY AREA No. 39 PRINCE GEORGE, BC, NAD83 (CSRS) 4.0.0.BC.1

BCGS 93G.086



THE INTENDED PLOT SIZE OF THIS PLAN IS 560mm IN WIDTH BY 432mm IN HEIGHT (C SIZE) WHEN PLOTTED AT A SCALE OF 1:500.

ALL DISTANCES ARE IN METRES AND DECIMALS THEREOF.

GRID BEARINGS ARE DERIVED FROM OBSERVATIONS BETWEEN GEODETIC CONTROL MONUMENTS 86H1484 AND 86H1471.

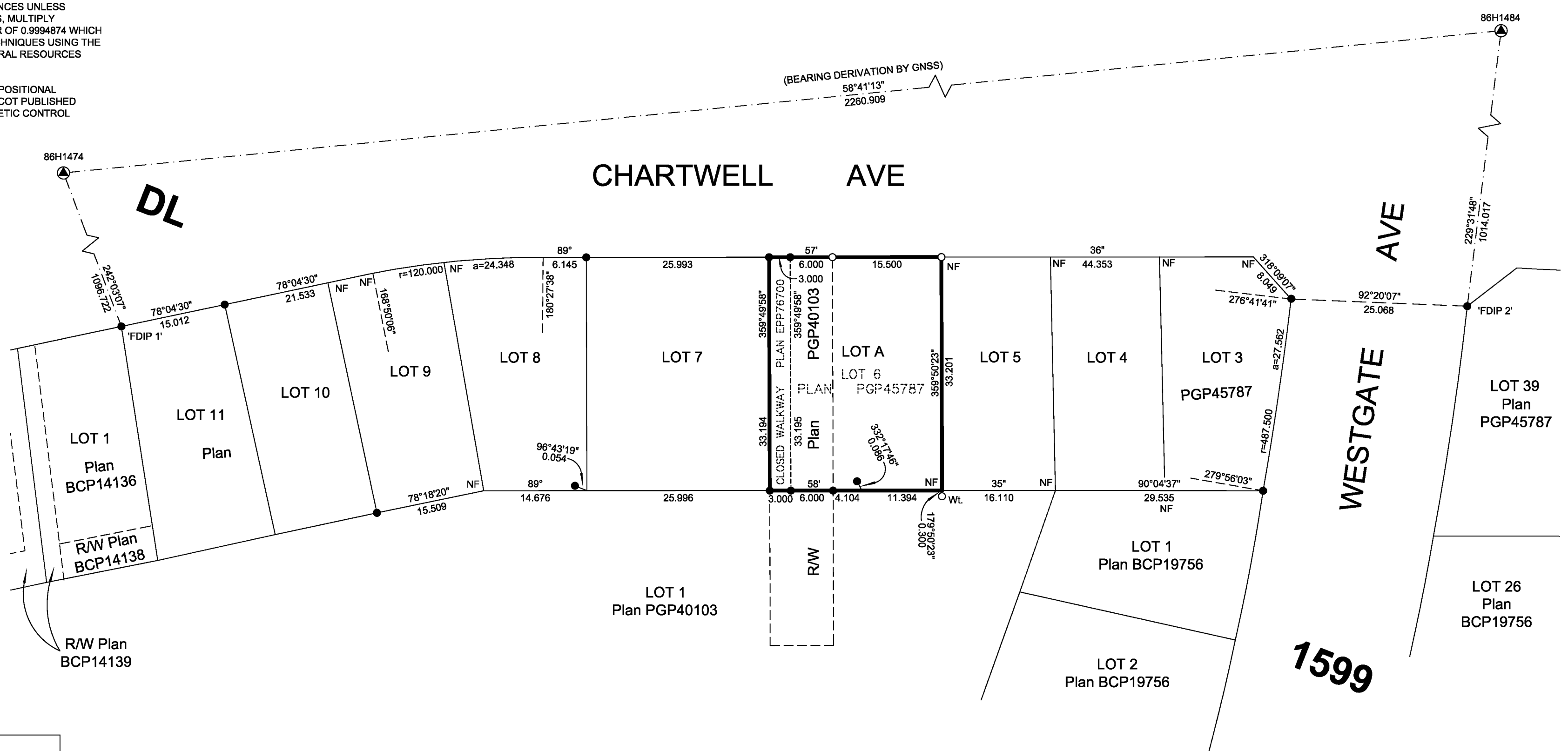
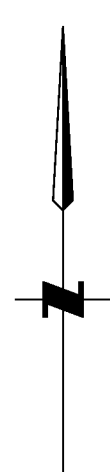
THIS PLAN SHOWS HORIZONTAL GROUND-LEVEL DISTANCES UNLESS OTHERWISE SPECIFIED. TO COMPUTE GRID DISTANCES, MULTIPLY GROUND-LEVEL DISTANCES BY THE COMBINED FACTOR OF 0.9994874 WHICH HAS BEEN DERIVED BY SINGLE POINT POSITIONING TECHNIQUES USING THE PRECISE POINT POSITIONING (PPP) SERVICES OF NATURAL RESOURCES CANADA.

THE UTM COORDINATES AND ESTIMATED HORIZONTAL POSITIONAL ACCURACY ACHIEVED HAVE BEEN DERIVED FROM MASCOT PUBLISHED COORDINATES AND STANDARD DEVIATIONS FOR GEODETIC CONTROL MONUMENT 86H1484.

NOTE:
THIS PLAN SHOWS ONE OR MORE WITNESS POSTS WHICH ARE NOT SET ON THE TRUE CORNER(S).
SOME POSTS ARE EXAGGERATED FOR CLARITY.

LEGEND

SYMBOLS		DESCRIPTION
FOUND	PLACED	
		CONTROL MONUMENT
		STANDARD IRON POST
		COMBINED SCALE FACTOR
		ESTIMATED HORIZONTAL POSITIONAL ACCURACY



GEOREFERENCING POSITIONS UTM COORDINATES, ZONE 10, NAD 83 (CSRS), 4.0.0.BC.1				
STATION	NORTHING	EASTING	EHPA	CSF
FDIP-1	5967599.61	512937.28	0.10	0.9994874
FDIP-2	5967602.48	513128.55	0.10	0.9994874

THE FIELD SURVEY REPRESENTED BY THIS PLAN WAS COMPLETED ON THE 2ND DAY OF OCTOBER, 2017.

ALBERT KOEHLER, BCLS 974

THIS PLAN LIES WITHIN THE REGIONAL DISTRICT OF FRASER-FORT GEORGE.

FILE: 20170057-CONS
KOEHLER LAND SURVEYING INC.
201 - 1396 5th AVENUE
PRINCE GEORGE, BC V2L 3L4
TEL: (250) 614-9703