

**REFERENCE PLAN TO ACCOMPANY BY-LAW No. 8893
(PRINCE GEORGE) TO CLOSE WALKWAY DEDICATED
ON PLAN PGP45787, DISTRICT LOT 1599, CARIBOO
DISTRICT.**

PLAN EPP76700

PURSUANT TO SECTION 120 OF THE LAND TITLE ACT AND SECTION 40 OF THE COMMUNITY CHARTER.

INTEGRATED SURVEY AREA No. 39 PRINCE GEORGE, BC, NAD83 (CSRS) 4.0.0.BC.1

BCGS 93G.086



THE INTENDED PLOT SIZE OF THIS PLAN IS 560mm IN WIDTH BY 432mm IN HEIGHT (C SIZE) WHEN PLOTTED AT A SCALE OF 1:500.

ALL DISTANCES ARE IN METRES AND DECIMALS THEREOF.

GRID BEARINGS ARE DERIVED FROM OBSERVATIONS BETWEEN GEODETIC CONTROL MONUMENTS 86H1484 AND 86H1471.

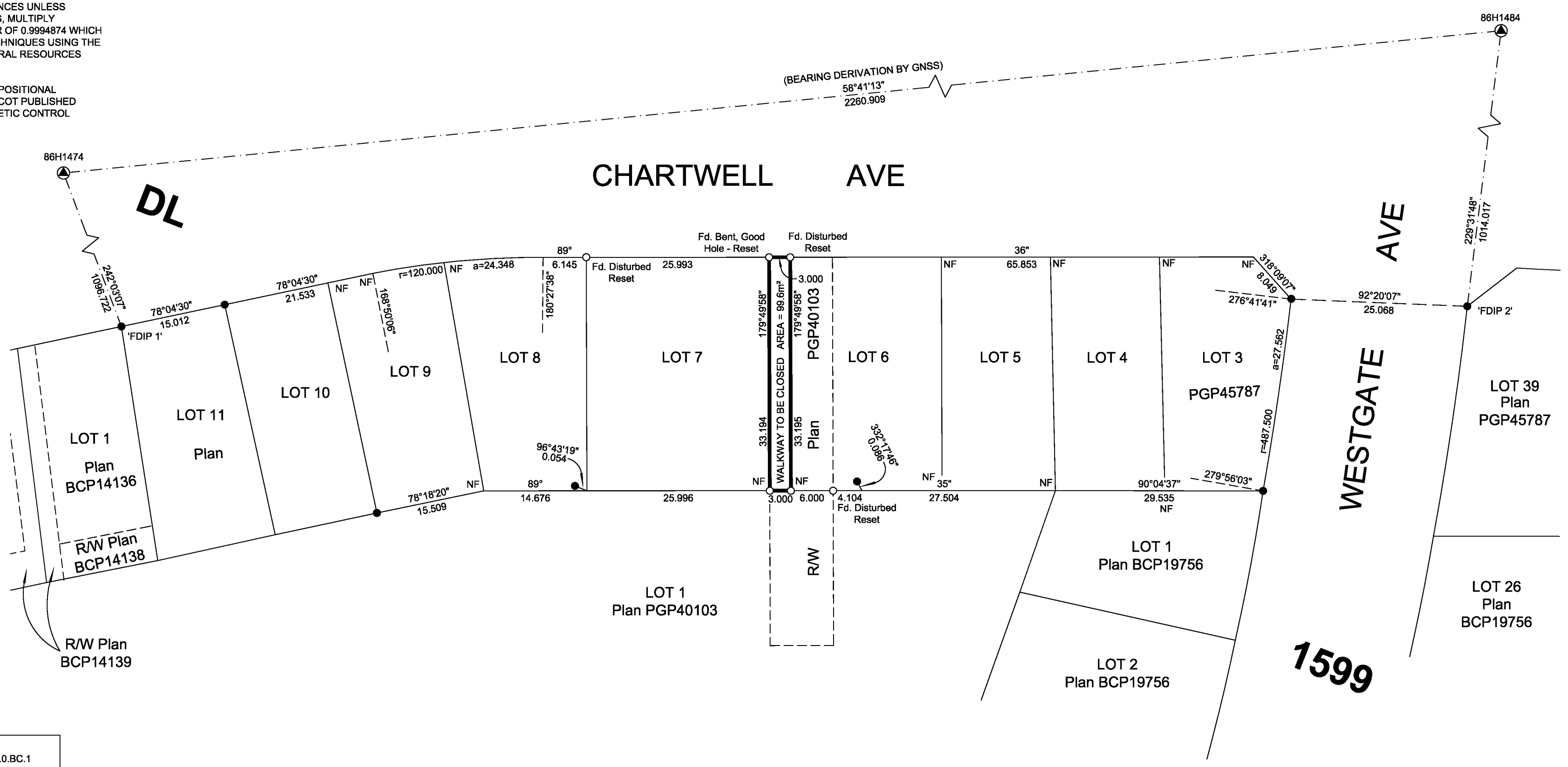
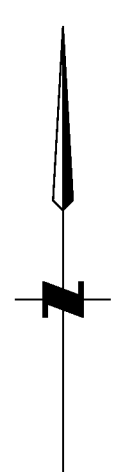
THIS PLAN SHOWS HORIZONTAL GROUND-LEVEL DISTANCES UNLESS OTHERWISE SPECIFIED. TO COMPUTE GRID DISTANCES, MULTIPLY GROUND-LEVEL DISTANCES BY THE COMBINED FACTOR OF 0.9994874 WHICH HAS BEEN DERIVED BY SINGLE POINT POSITIONING TECHNIQUES USING THE PRECISE POINT POSITIONING (PPP) SERVICES OF NATURAL RESOURCES CANADA.

THE UTM COORDINATES AND ESTIMATED HORIZONTAL POSITIONAL ACCURACY ACHIEVED HAVE BEEN DERIVED FROM MASCOT PUBLISHED COORDINATES AND STANDARD DEVIATIONS FOR GEODETIC CONTROL MONUMENT 86H1484.

NOTE:
SOME POSTS ARE EXAGGERATED FOR CLARITY.

LEGEND

SYMBOLS	DESCRIPTION
FOUND	PLACED
	CONTROL MONUMENT
	STANDARD IRON POST
	COMBINED SCALE FACTOR
	ESTIMATED HORIZONTAL POSITIONAL ACCURACY



GEOREFERENCING POSITIONS UTM COORDINATES, ZONE 10, NAD 83 (CSRS), 4.0.0.BC.1				
STATION	NORTHING	EASTING	EHPA	CSF
FDIP-1	5967599.61	512937.28	0.10	0.9994874
FDIP-2	5967602.48	513128.55	0.10	0.9994874

THE FIELD SURVEY REPRESENTED BY THIS PLAN WAS COMPLETED ON THE 2ND DAY OF OCTOBER, 2017.

ALBERT KOEHLER, BCLS 974

THIS PLAN LIES WITHIN THE REGIONAL DISTRICT OF FRASER-FORT GEORGE.

FILE: 20170057-RC
KOEHLER LAND SURVEYING INC.
201 - 1396 5th AVENUE
PRINCE GEORGE, BC V2L 3L4
TEL: (250) 614-9703