

REFERENCE PLAN OF ROAD DEDICATION OVER PART OF DISTRICT LOT 2157, CARIBOO DISTRICT, EXCEPT PLANS B4720, 2876, AND A59.

PLAN EPP76516

PURSUANT TO SECTION 107 OF THE LAND TITLE ACT.
FOR ROAD DEDICATION

INTEGRATED SURVEY AREA No. 39 PRINCE GEORGE, BC, NAD83 (CSRS) 4.0.0.BC.1

BCGS 93G.097



THE INTENDED PLOT SIZE OF THIS PLAN IS 432mm IN WIDTH BY 560mm IN HEIGHT (C SIZE) WHEN PLOTTED AT A SCALE OF 1:1500.

ALL DISTANCES ARE IN METRES AND DECIMALS THEREOF.

GRID BEARINGS ARE DERIVED FROM OBSERVATIONS BETWEEN GEODETIC CONTROL MONUMENTS 85H1216 AND 86H1836.

THE UTM COORDINATES AND ESTIMATED HORIZONTAL POSITIONAL ACCURACY ACHIEVED HAVE BEEN DERIVED FROM MASCOT PUBLISHED COORDINATES AND STANDARD DEVIATIONS FOR GEODETIC CONTROL MONUMENT 85H1216.

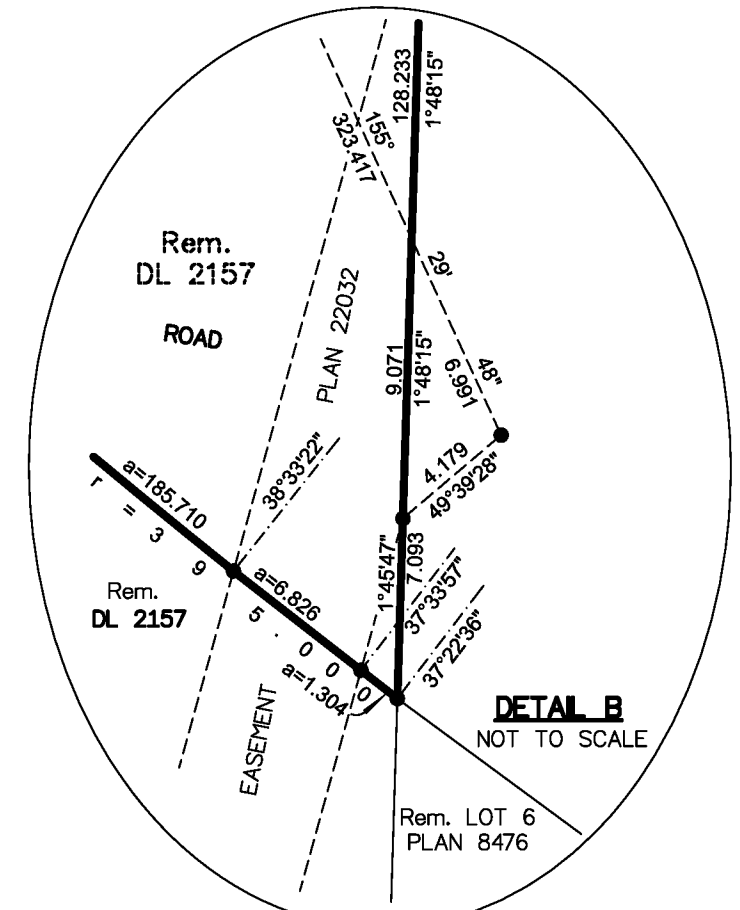
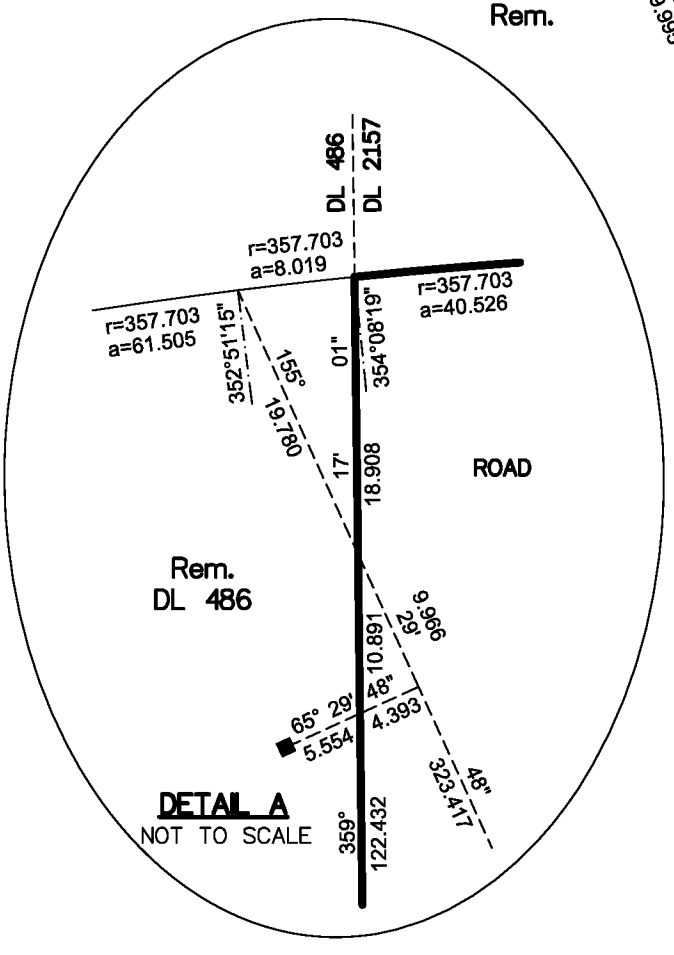
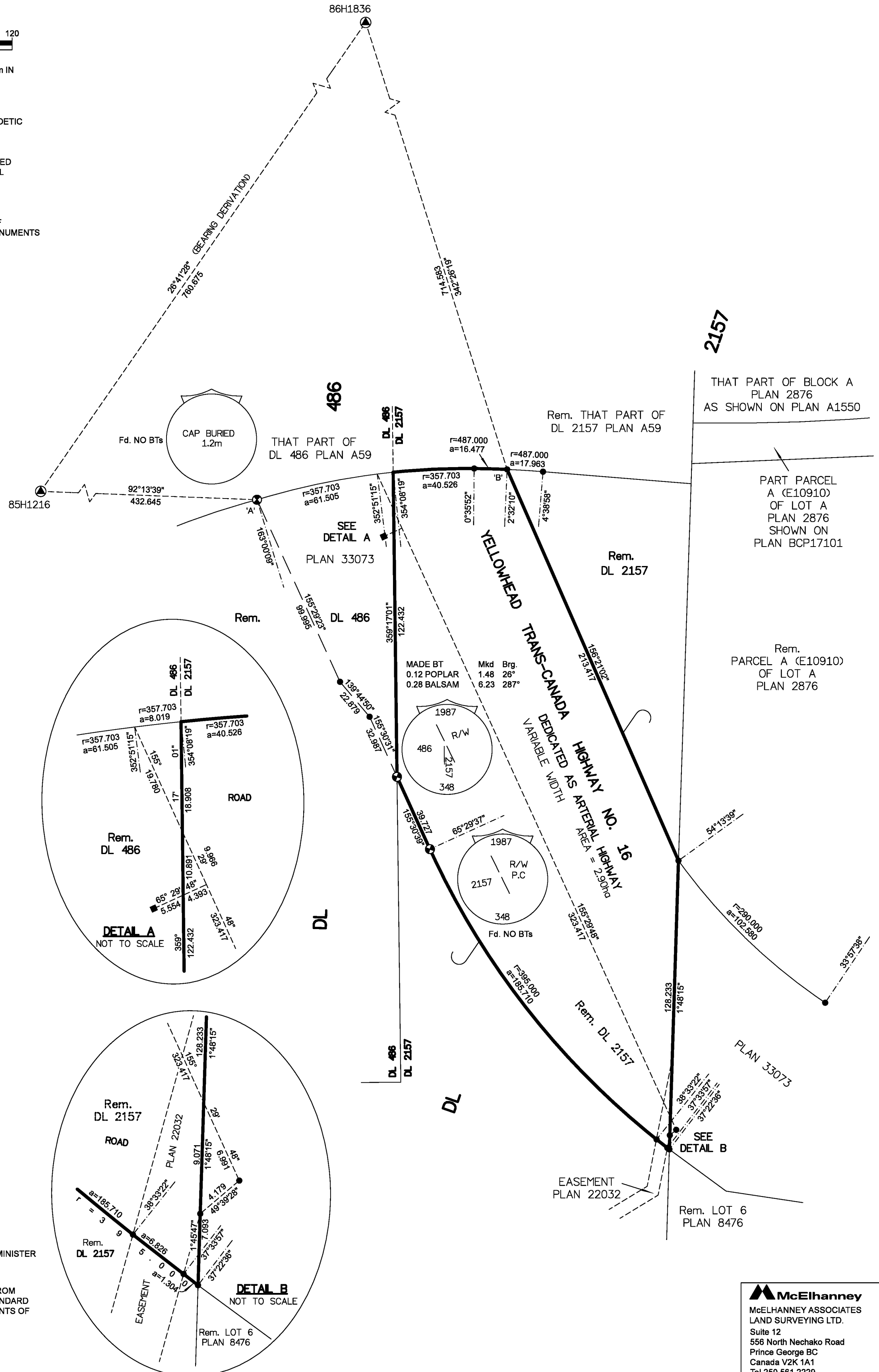
THIS PLAN SHOWS HORIZONTAL GROUND-LEVEL DISTANCES UNLESS OTHERWISE SPECIFIED. TO COMPUTE GRID DISTANCES, MULTIPLY GROUND-LEVEL DISTANCES BY THE AVERAGE COMBINED FACTOR OF 0.9995160 WHICH HAS BEEN DERIVED FROM GEODETIC CONTROL MONUMENTS 85H1216 AND 86H1836.

LEGEND

SYMBOLS	DESCRIPTION
FOUND PLACED	
	CONTROL MONUMENT
	STANDARD CAPPED POST
	STANDARD IRON POST
	LEAD PLUG
CSF	COMBINED SCALE FACTOR
EHPA	ESTIMATED HORIZONTAL POSITIONAL ACCURACY

BEARINGS TO BEARING TREES ARE MAGNETIC.

GEOREFERENCING POSITIONS UTM COORDINATES, ZONE 10, NAD 83 (CSRS), 4.0.0.BC.1				
STATION	NORTHING	EASTING	EHPA	CSF
Fd.CP'A'	5973364.11	518198.27	010	0.9995153
Fd.IP'B'	5973379.27	518323.19	0.10	0.9995162



THIS PLAN DEDICATES ARTERIAL HIGHWAY AS AUTHORIZED BY THE MINISTER OF TRANSPORTATION AND INFRASTRUCTURE.

THE ASSOCIATION OF BC LAND SURVEYORS HAS GRANTED RELIEF FROM COMPLIANCE WITH GSI RULE 5-4(2) FOR THIS SURVEY SINCE THE STANDARD DEVIATIONS OF THE ISA MONUMENTS DO NOT MEET THE REQUIREMENTS OF SAID RULE.

THE FIELD SURVEY REPRESENTED BY THIS PLAN WAS COMPLETED ON THE 28th DAY OF SEPTEMBER, 2017
SHAUNA C. GOERTZEN, BCLS 798

THIS PLAN LIES WITHIN THE REGIONAL DISTRICT OF FRASER-FORT GEORGE.

McElhanney
McELHANNEY ASSOCIATES
LAND SURVEYING LTD.
Suite 12
556 North Nechako Road
Prince George BC
Canada V2K 1A1
Tel 250 561 2229

File No. 2341-6613-RD
MoTI File No. PS735576