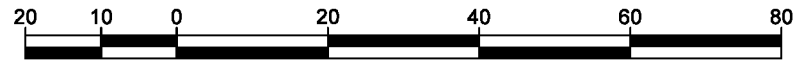


REFERENCE PLAN OF ROAD DEDICATION OF PART OF LOT A, DISTRICT LOT 619, CARIBOO DISTRICT, PLAN 28304.

PLAN EPP75695

PURSUANT TO SECTION 107 OF THE LAND TITLE ACT.
FOR ROAD DEDICATION

INTEGRATED SURVEY AREA No. 39 PRINCE GEORGE, BC, NAD83 (CSRS) 4.0.0.BC.1
BCGS 93G.086



THE INTENDED PLOT SIZE OF THIS PLAN IS 560mm IN WIDTH BY 432mm IN HEIGHT (C SIZE) WHEN PLOTTED AT A SCALE OF 1:1000.

ALL DISTANCES ARE IN METRES AND DECIMALS THEREOF.

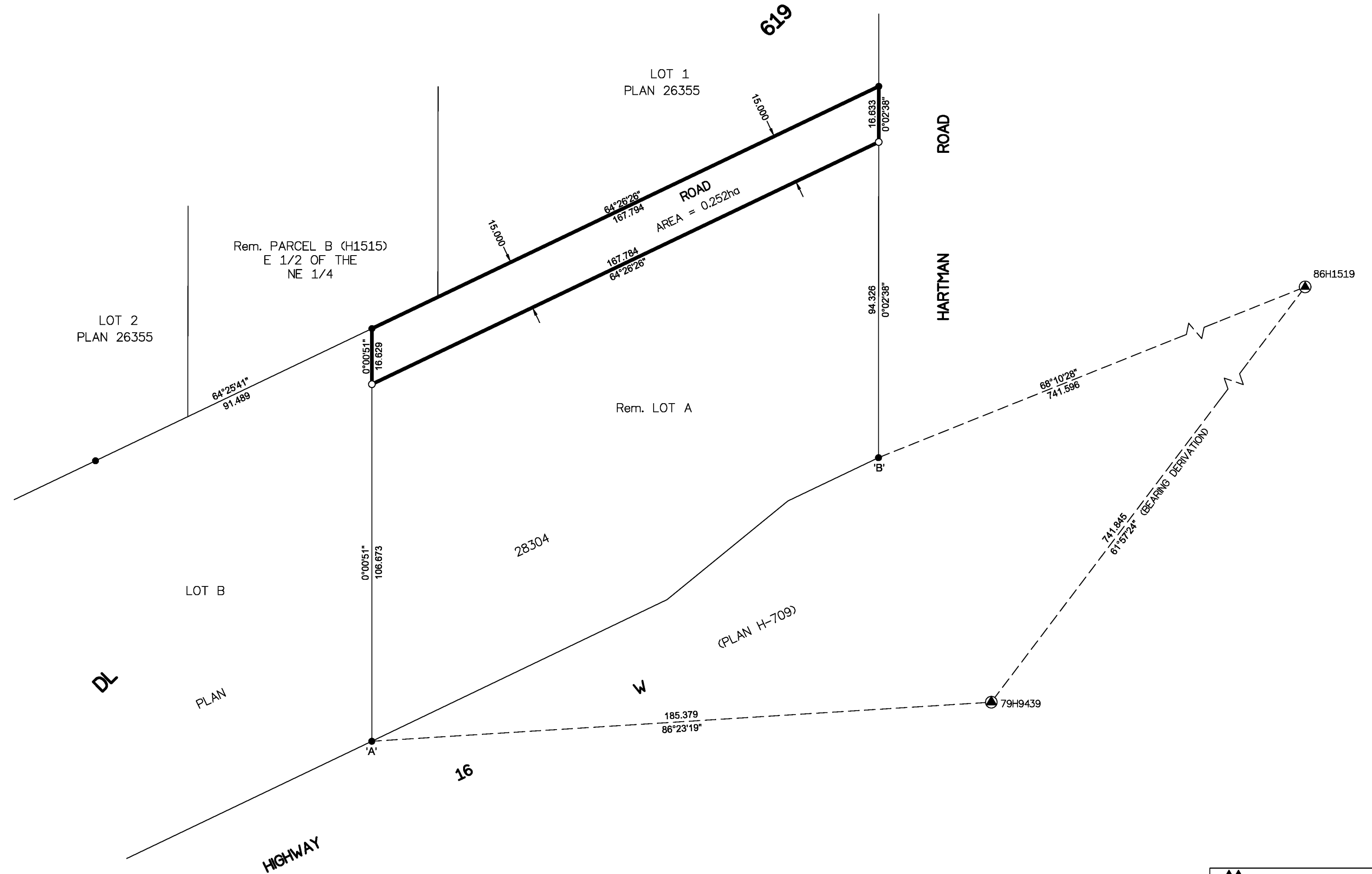
GRID BEARINGS ARE DERIVED FROM OBSERVATIONS BETWEEN GEODETIC CONTROL MONUMENTS 79H9439 AND 86H1519.

THE UTM COORDINATES AND ESTIMATED HORIZONTAL POSITIONAL ACCURACY ACHIEVED HAVE BEEN DERIVED FROM MASCOT PUBLISHED COORDINATES AND STANDARD DEVIATIONS FOR GEODETIC CONTROL MONUMENT 79H9439.

THIS PLAN SHOWS HORIZONTAL GROUND-LEVEL DISTANCES UNLESS OTHERWISE SPECIFIED. TO COMPUTE GRID DISTANCES, MULTIPLY GROUND-LEVEL DISTANCES BY THE AVERAGE COMBINED FACTOR OF 0.9994862 WHICH HAS BEEN DERIVED FROM GEODETIC CONTROL MONUMENTS 79H9439 AND 86H1519.

LEGEND

SYMBOLS		DESCRIPTION
FOUND	PLACED	
		CONTROL MONUMENT
		STANDARD IRON POST
		COMBINED SCALE FACTOR
		ESTIMATED HORIZONTAL POSITIONAL ACCURACY



GEOREFERENCING POSITIONS				
UTM COORDINATES, ZONE 10, NAD 83 (CSRS), 4.0.0.BC.1				
STATION	NORTHING	EASTING	EHPA	CSF
Fd. IP 'A'	5963560.28	507636.95	0.10	0.9994862
Fd. IP 'B'	5963644.97	507788.19	0.10	0.9994862

THE ASSOCIATION OF BC LAND SURVEYORS HAS GRANTED RELIEF FROM COMPLIANCE WITH GSI RULE 5-4(2) FOR THIS SURVEY SINCE THE STANDARD DEVIATIONS OF THE ISA MONUMENTS DO NOT MEET THE REQUIREMENTS OF SAID RULE.

THE FIELD SURVEY REPRESENTED BY THIS PLAN WAS COMPLETED ON THE 18th DAY OF AUGUST, 2017
SHAUNA C. GOERTZEN, BCLS 798

THIS PLAN LIES WITHIN THE REGIONAL DISTRICT OF FRASER-FORT GEORGE.

McElhanney
McELHANNEY ASSOCIATES
LAND SURVEYING LTD.
Suite 12
556 North Nechako Road
Prince George BC
Canada V2K 1A1
Tel 250 561 2229

File No. 2341-6605-RD