

REFERENCE PLAN OF EASEMENT OVER PART OF COMMON PROPERTY OF PHASE 1 OF STRATA PLAN EPS4370 AND PART OF LOT 83, DISTRICT LOTS 1600 AND 2003, PLAN PGP41802, EXCEPT STRATA PLAN EPS4370, ALL IN CARIBOO DISTRICT.

PURSUANT TO SECTION 99(1)(e) OF THE LAND TITLE ACT. FOR EASEMENT PURPOSES

INTEGRATED SURVEY AREA No. 39 PRINCE GEORGE, BC, NAD83 (CSRS) 4.0.0.BC.1
BCGS 93G.086 AND 93G.087



THE INTENDED PLOT SIZE OF THIS PLAN IS 560mm IN WIDTH BY 432mm IN HEIGHT (C SIZE) WHEN PLOTTED AT A SCALE OF 1:750.

ALL DISTANCES ARE IN METRES AND DECIMALS THEREOF.

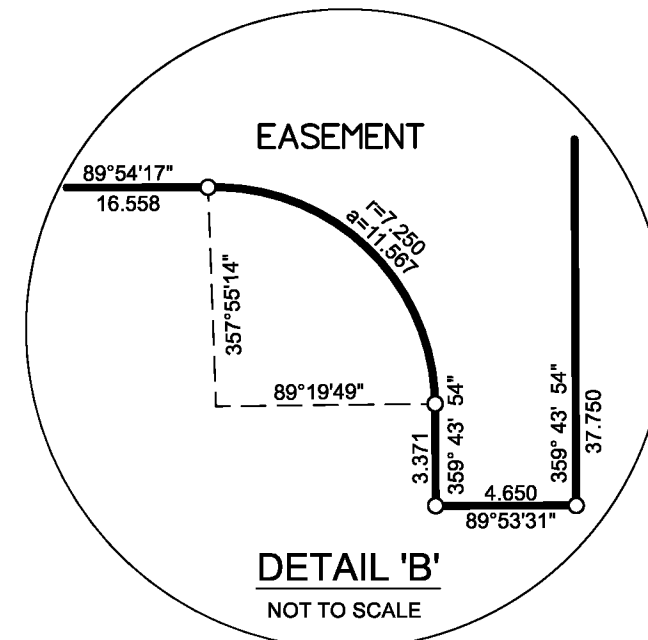
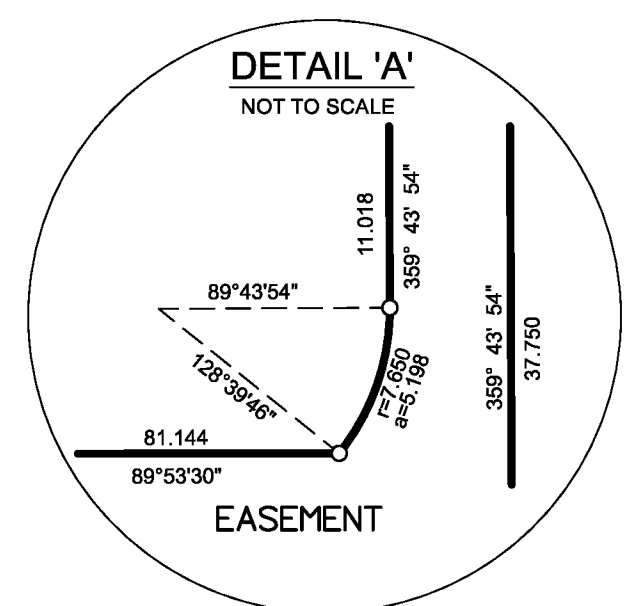
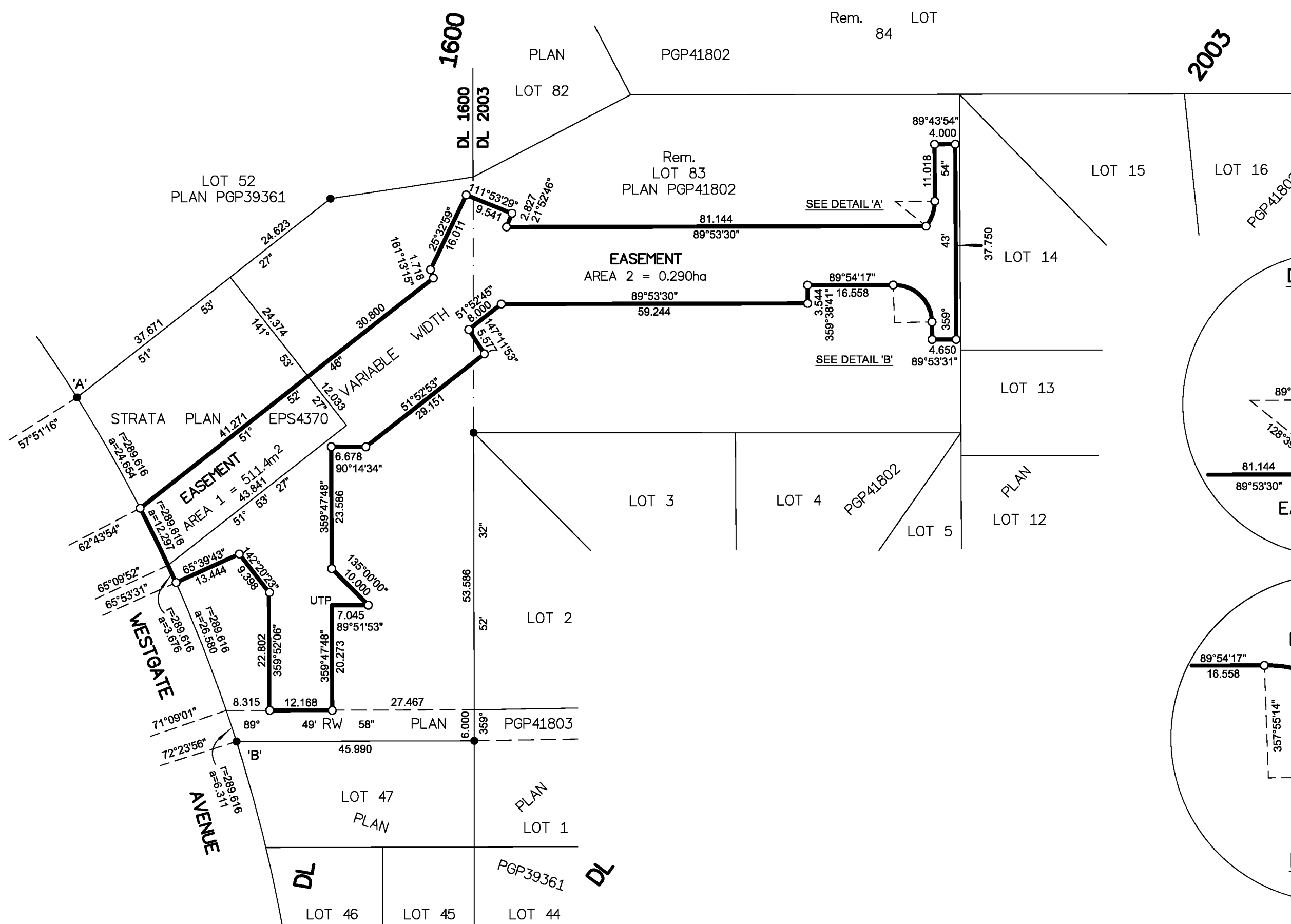
GRID BEARINGS ARE DERIVED FROM PREVIOUSLY INTEGRATED PLAN EPP74313.

THE UTM COORDINATES AND ESTIMATED HORIZONTAL POSITIONAL ACCURACY ACHIEVED ARE DERIVED FROM PREVIOUSLY INTEGRATED PLAN EPP74313.

THIS PLAN SHOWS HORIZONTAL GROUND-LEVEL DISTANCES UNLESS OTHERWISE SPECIFIED. TO COMPUTE GRID DISTANCES, MULTIPLY GROUND-LEVEL DISTANCES BY THE COMBINED FACTOR OF 0.9994932 DERIVED FROM PREVIOUSLY INTEGRATED PLAN EPP74313.

LEGEND

SYMBOLS	DESCRIPTION
●	STANDARD IRON POST
○	COMBINED SCALE FACTOR
CSF	ESTIMATED HORIZONTAL POSITIONAL ACCURACY
EHPA	UNSUITABLE TO POST
UTP	



BOOK OF REFERENCE	
LEGAL DESCRIPTION	AREA
PHASE 1 STRATA PLAN EPS4370	AREA 1 = 511.4m ²
LOT 83, DL 1600 AND 2003, PLAN PGP41802 EXCEPT STRATA PLAN EPS4370	AREA 2 = 0.290ha
TOTAL AREA = 0.341ha	

GEOREFERENCING POSITIONS UTM COORDINATES, ZONE 10, NAD 83 (CSRS), 4.0.0.BC.1				
STATION	NORTHING	EASTING	EHPA	CSF
Fd. IP 'A'	5968029.54	513091.66	0.10	0.9994896
Fd. IP 'B'	5967963.05	513122.49	0.10	0.9994896

THE FIELD SURVEY REPRESENTED BY THIS PLAN WAS COMPLETED ON THE 5th DAY OF DECEMBER, 2017.
SHAUNA C. GOERTZEN, BCLS 798

THIS PLAN LIES WITHIN THE REGIONAL DISTRICT OF FRASER-FORT GEORGE.

McElhanney
McELHANNEY ASSOCIATES
LAND SURVEYING LTD.
Suite 12
556 North Nechako Road
Prince George BC
Canada V2K 1A1
Tel 250 561 2229

File No. 2341-6474-E