

**EXPLANATORY PLAN OF PART OF LOT 41 DISTRICT LOT 745 CARIBOO
DISTRICT PLAN 17833 EXCEPT PLANS 28055 AND PGP35495**

For Easement Purposes
Pursuant to Section 99(1)(e) of the Land Title Act
BCGS 93G.087



The intended plot size of this plan is 864mm in width by 560mm in height (D size) when plotted at a scale of 1:250.

All distances are in metres and decimals thereof.

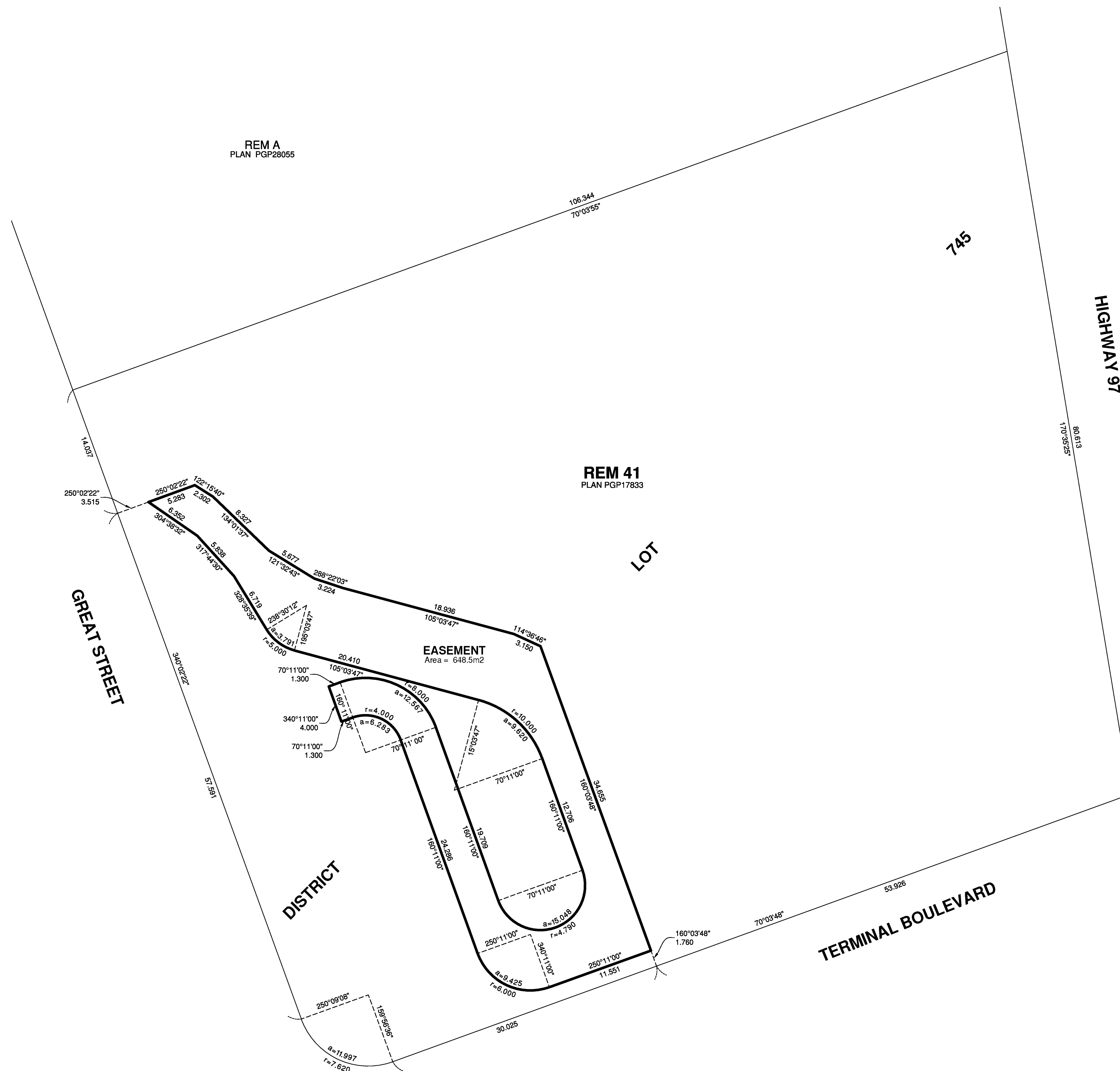
Integrated Survey Area No. 39,
City of Prince George,
NAD83 (CSRS) 4.0.0.BC.1

Bearings are grid, derived from
Plan PGP35495.

This plan shows horizontal ground
level distances except where
otherwise specified.

LEGEND

m² denotes square metres



BOOK OF REFERENCE	
PART	AREA
Lot 41 District Lot 745 Cariboo District Plan 17833 Except Plans 28055 and PGP35495	648.5 m ²

WSP
WSP Surveys (BC) Limited Partnership
300-65 Richmond St. New Westminster, BC

PROJECT REF./DRAWING No.
171-08437-00-001-00-LSETE002-R0

This plan lies within the Regional District of Fraser-Fort George

This plan is based on the following Land Title and Survey
Authority of BC records:
Plan PGP35495
Plan PGP28055
Plan PGP17833

Rory C. O'Connell, BCLS 876
25th day of August, 2017
ECR# 202598