

# EXPLANATORY PLAN TO ACCOMPANY LEASE OF PART OF A BUILDING LOCATED ON LOT 41 DISTRICT LOT 745 CARIBOO DISTRICT PLAN 17833 EXCEPT PLANS 28055 AND PGP35495

PLAN EPP75022

Pursuant to Section 99(1)(k) of the Land Title Act

BCGS 93G.087



REM A  
Plan PGP28055

The intended plot size of this plan is 432mm in width by 280mm in height (B size) when plotted at a scale of 1:500.

All distances are in metres and decimals thereof.

Integrated Survey Area No. 39, City of Prince George,  
NAD83 (CSRS) 4.0.0.BC.1

Bearings are grid, derived from  
Plan PGP35495.

This plan shows horizontal ground  
level distances except where  
otherwise specified.

The limits of the Lease Area  
shown hereon are defined by the  
interior face of all exterior walls,  
doors and windows.

Unless otherwise indicated all  
bearings, deflect by multiples of  
90°.

**LEGEND**

m<sup>2</sup> denotes square metres

**GREAT STREET**

**DISTRICT**

**TERMINAL BOULEVARD**

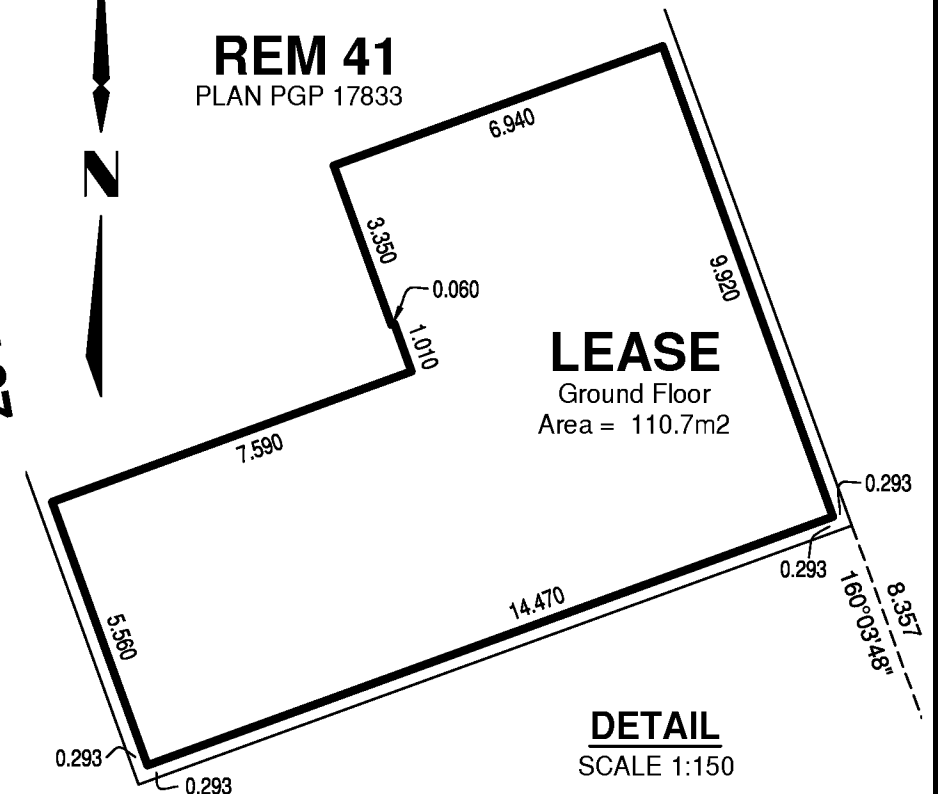
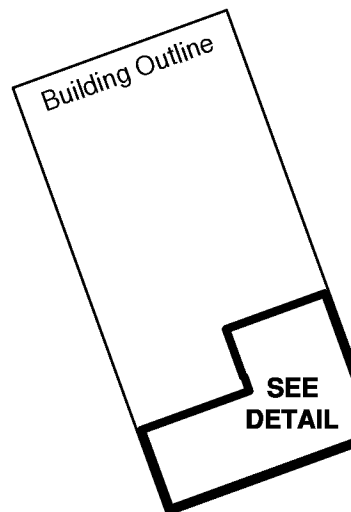
**HIGHWAY 97**

**REM 41**  
PLAN PGP17833

**REM 41**  
PLAN PGP 17833

**LEASE**  
Ground Floor  
Area = 110.7m<sup>2</sup>

**DETAIL**  
SCALE 1:150



This plan lies within the Regional District of Fraser-Fort George

This plan is based on the following Land Title and Survey  
Authority of BC records:  
Plan PGP35495  
Plan PGP28055  
Plan PGP17833

Rory C. O'Connell, BCLS 876  
25th day of August, 2017  
ECR# 202597

BOOK OF REFERENCE	
PART	AREA
Lot 41 District Lot 745 Cariboo District Plan 17833 Except Plans 28055 and PGP35495	110.7 m <sup>2</sup>

**wsp**  
WSP Surveys (BC) Limited Partnership  
300-65 Richmond St, New Westminster, BC  
PROJECT REF./DRAWING No.  
171-08437-00-001-00-LSETE001-R0