

# EXPLANATORY PLAN OF EASEMENT OVER PARTS OF LOTS 2 AND 3, DISTRICT LOT 2424, CARIBOO DISTRICT, PLAN EPP64032.

PLAN EPP74620

PURSUANT TO SECTION 99(1)(e) OF THE LAND TITLE ACT.  
FOR EASEMENT PURPOSES

INTEGRATED SURVEY AREA No. 39 PRINCE GEORGE, BC, NAD83 (CSRS) 4.0.0.BC.1  
BCGS 93J.006



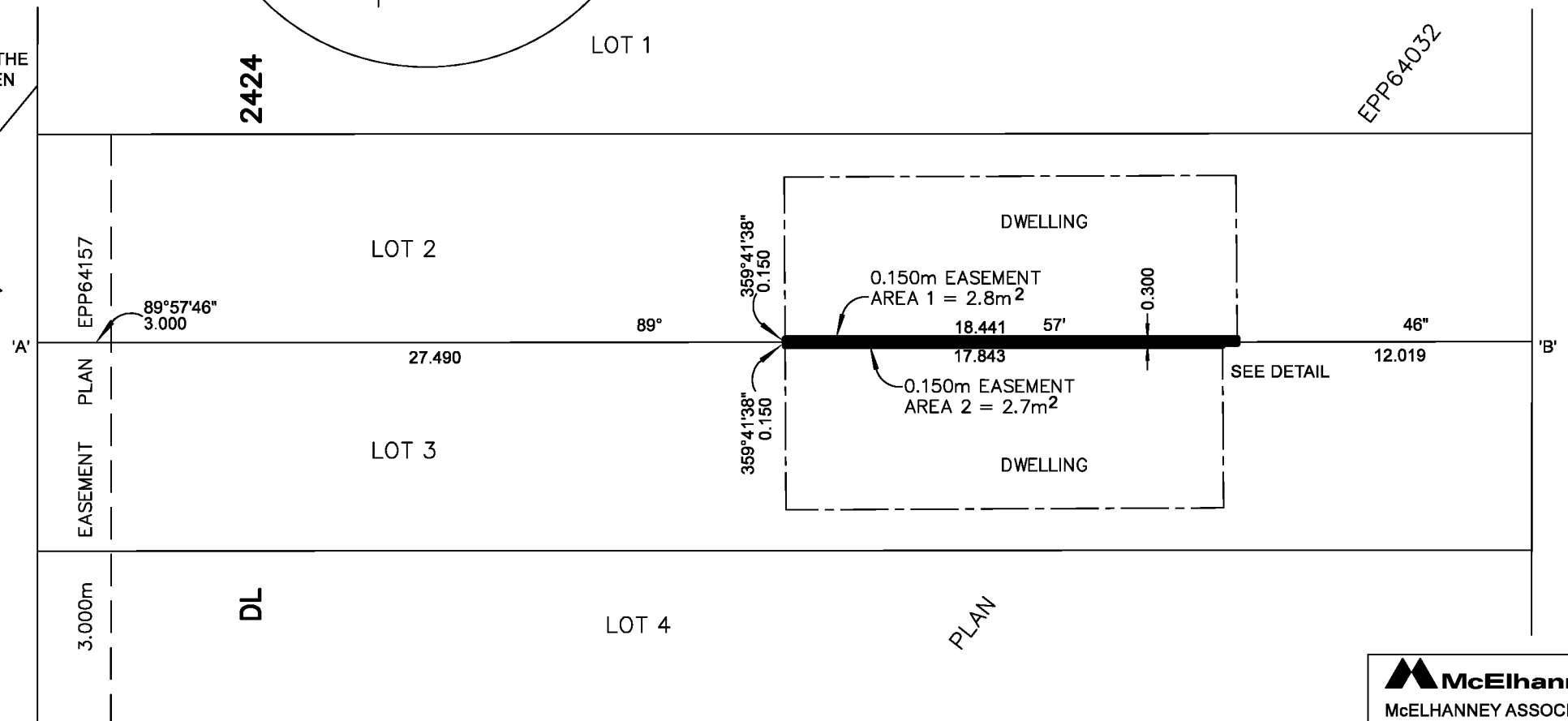
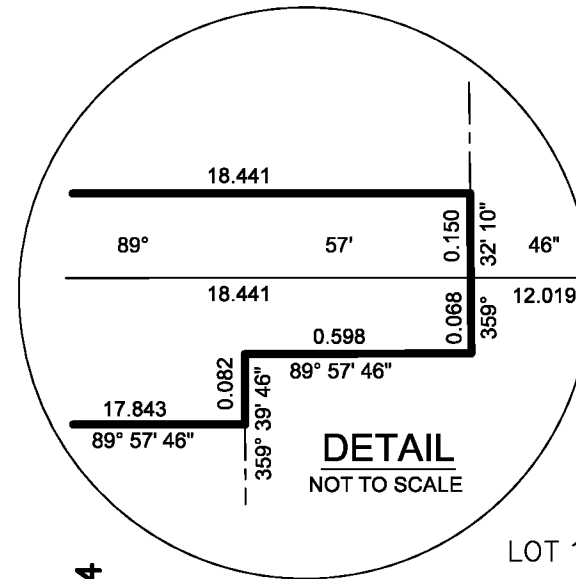
THE INTENDED PLOT SIZE OF THIS PLAN IS 432mm IN WIDTH BY 280mm IN HEIGHT (B SIZE) WHEN PLOTTED AT A SCALE OF 1:250.

ALL DISTANCES ARE IN METRES AND DECIMALS THEREOF.

GRID BEARINGS ARE DERIVED FROM PLAN EPP64032

THE UTM COORDINATES AND ESTIMATED HORIZONTAL POSITIONAL ACCURACY ARE DERIVED FROM PLAN EPP64032.

THIS PLAN SHOWS HORIZONTAL GROUND-LEVEL DISTANCES, UNLESS OTHERWISE SPECIFIED. TO COMPUTE GRID DISTANCES, MULTIPLY GROUND-LEVEL DISTANCES BY THE AVERAGE COMBINED FACTOR OF 0.9994864. THE AVERAGE COMBINED FACTOR HAS BEEN DETERMINED BASED ON PLAN EPP64032.



BOOK OF REFERENCE		
DESCRIPTION	PID	AREA (m <sup>2</sup> )
LOT 2 DL 2424 PLAN EPP64032	029-954-479	AREA 1 = 2.8m <sup>2</sup>
LOT 3 DL 2424 PLAN EPP64032	029-954-487	AREA 2 = 2.7m <sup>2</sup>

THIS PLAN IS BASED ON THE FOLLOWING LAND TITLE AND SURVEY AUTHORITY OF BC RECORDS:  
EPP64032

SHAUNA C. GOERTZEN, BCLS 798  
JULY 25, 2017

THIS PLAN LIES WITHIN THE REGIONAL DISTRICT OF FRASER-FORT GEORGE.

GEOREFERENCING POSITIONS UTM COORDINATES, ZONE 10, NAD 83 (CSRS), 4.0.0.BC.1				
STATION	NORTHING	EASTING	EHPA	CSF
'A'	5984208.78	512818.61	0.05	0.9994858
'B'	5984208.82	512879.53	0.05	0.9994861

**McElhanney**  
McELHANNEY ASSOCIATES  
LAND SURVEYING LTD.  
Suite 12  
556 North Nechako Road  
Prince George BC  
Canada V2K 1A1  
Tel 250 561 2229

File No. 2341-6464-E2