

PLAN EPP7450

REFERENCE PLAN OF STATUTORY RIGHT OF WAY  
OVER PART OF DISTRICT LOT 2014,  
CARIBOO DISTRICT EXCEPT PLANS 29514 AND EPP5390

Pursuant to Section 113  
of the Land Title Act.

BCGS 93G.087

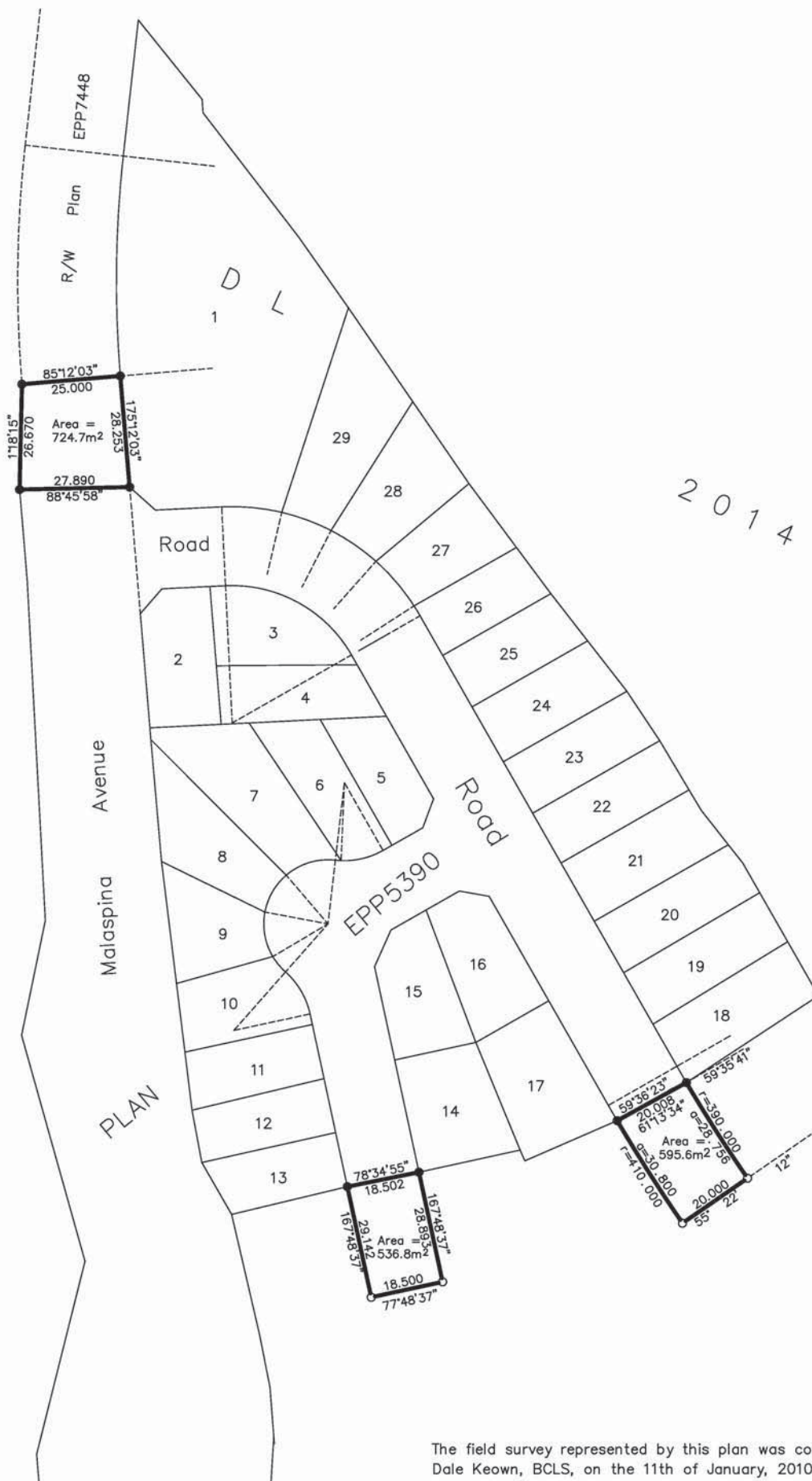
THE INTENDED PLOT SIZE OF THIS PLAN IS 432mm IN WIDTH  
BY 560mm IN HEIGHT (C SIZE) WHEN PLOTTED AT A SCALE  
OF 1:1000



LEGEND

- Standard Iron Post Found
- Standard Iron Post Placed

Grid bearings are derived from plan EPP5390  
integrated survey area number 39, City of  
Prince George, B.C. NAD83(CSRS)



This plan lies within the Regional District  
of Fraser - Fort George.

The field survey represented by this plan was completed by  
Dale Keown, BCLS, on the 11th of January, 2010.

<p><b>McElhanney</b> McElhanney Associates Land Surveying Ltd. Prince George, B.C. Ph: (250) 561-2229 Fax: 563-1941</p>		
F.B.- RA	D.L.- 2014	File No. - 5564-RW4