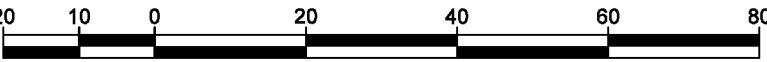


REFERENCE PLAN OF EASEMENT OVER
PART OF LOTS 1 AND 2, DISTRICT LOT
10231, CARIBOO DISTRICT, PLAN EPP74493.

PURSUANT TO SECTION 99(1)(e) OF THE LAND TITLE ACT
FOR EASEMENT PURPOSES

BCGS 93G.096



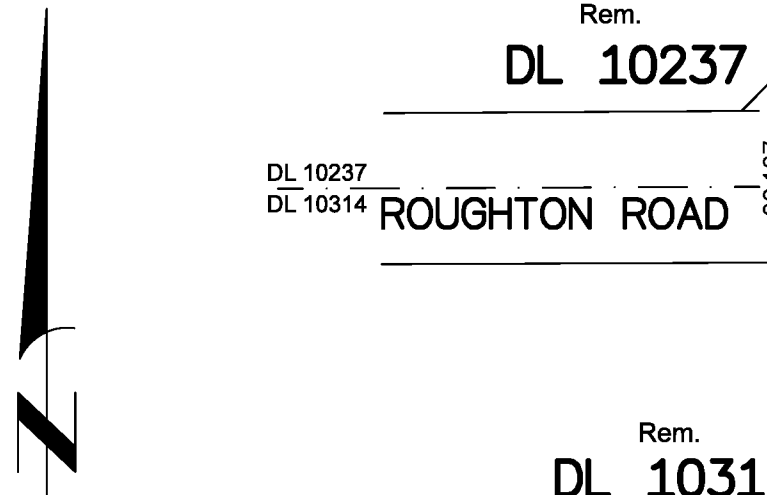
THE INTENDED PLOT SIZE OF THIS PLAN IS 560mm IN WIDTH BY 432mm IN
HEIGHT (C SIZE) WHEN PLOTTED AT A SCALE OF 1:1000.

ALL DISTANCES ARE IN METRES AND DECIMALS THEREOF.

GRID BEARINGS ARE DERIVED FROM DIFFERENTIAL DUAL FREQUENCY GNSS
OBSERVATIONS AND ARE REFERRED TO THE CENTRAL MERIDIAN OF UTM
ZONE 10.

THIS PLAN SHOWS HORIZONTAL GROUND-LEVEL DISTANCES, UNLESS
OTHERWISE SPECIFIED. TO COMPUTE GRID DISTANCES, MULTIPLY
GROUND-LEVEL DISTANCES BY THE AVERAGE COMBINED FACTOR OF
0.9994800. THE AVERAGE COMBINED FACTOR HAS BEEN DETERMINED BASED
ON AN ELLIPSOIDAL ELEVATION OF 777.15 METRES.

THE UTM COORDINATES AND ESTIMATED HORIZONTAL POSITIONAL
ACCURACY ACHIEVED HAVE BEEN DERIVED FROM DUAL FREQUENCY
GNSS OBSERVATIONS PROCESSED USING NATURAL RESOURCES
CANADA'S PRECISE POINT POSITIONING SERVICE.



LEGEND

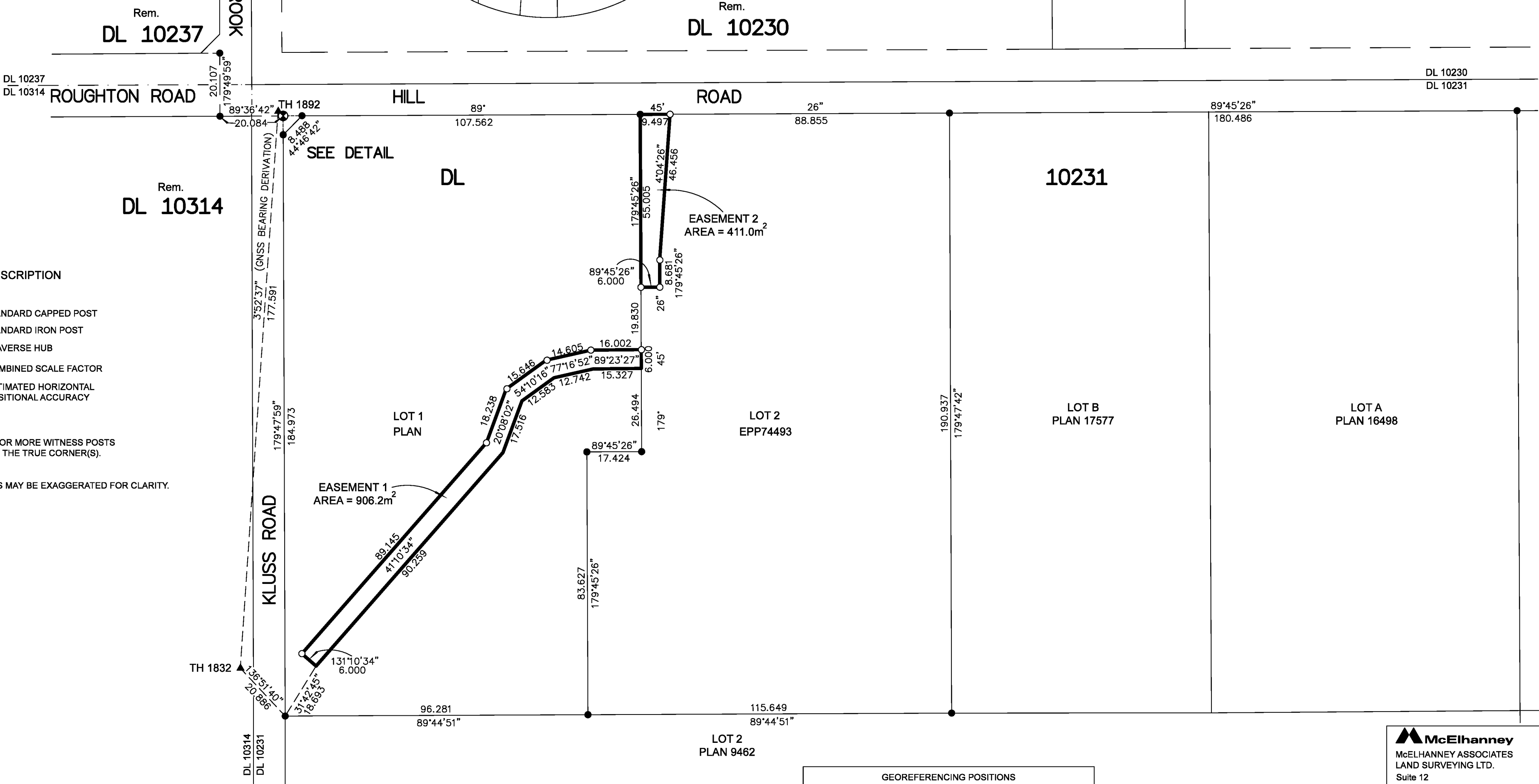
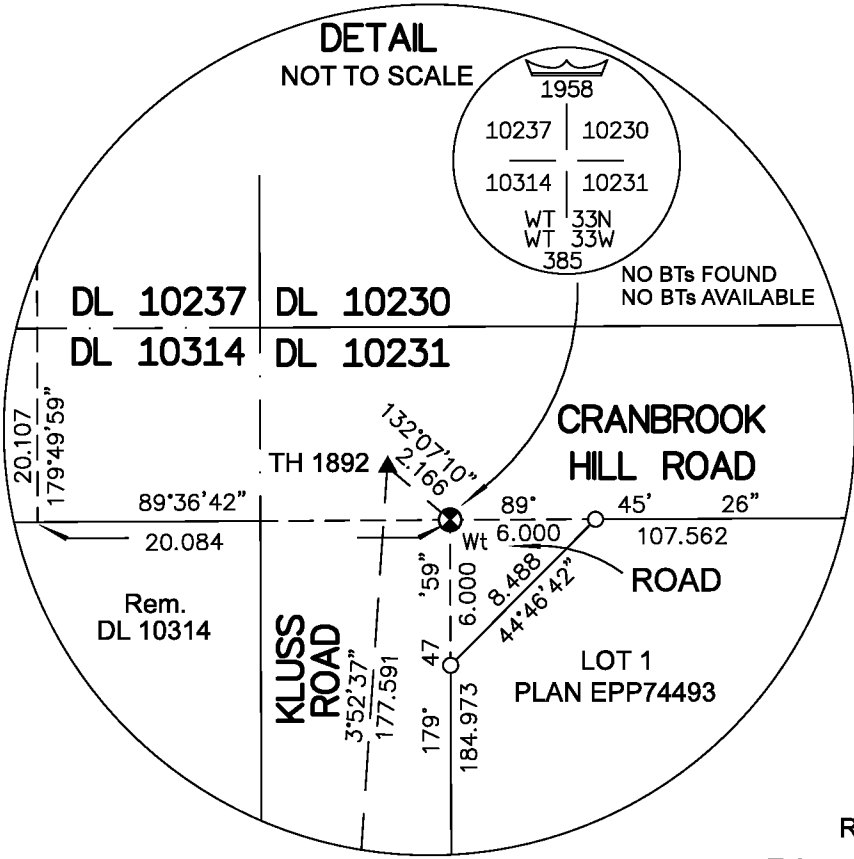
SYMBOLS	DESCRIPTION
FOUND	PLACED
⊗	STANDARD CAPPED POST
●	○ STANDARD IRON POST
▲	TRAVERSE HUB
CSF	COMBINED SCALE FACTOR
EHPA	ESTIMATED HORIZONTAL POSITIONAL ACCURACY

NOTE:
THIS PLAN SHOWS ONE OR MORE WITNESS POSTS
WHICH ARE NOT SET ON THE TRUE CORNER(S).

NOTE:
SOME POSTS AND LINES MAY BE EXAGGERATED FOR CLARITY.

THE FIELD SURVEY REPRESENTED BY THIS PLAN WAS COMPLETED
ON THE 20th DAY OF SEPTEMBER, 2017
DARREN KENT, BCLS 904

THIS PLAN LIES WITHIN THE REGIONAL DISTRICT OF FRASER-FORT GEORGE.



GEOREFERENCING POSITIONS UTM COORDINATES, ZONE 10, NAD 83 (CSRS), 2002.0				
STATION	NORTHING	EASTING	EHPA	CSF
TH 1892	5974375.26	510264.40	0.05	0.9994798
TH 1832	5974198.16	510252.40	0.05	0.9994803

McElhanney
McELHANNEY ASSOCIATES
LAND SURVEYING LTD.
Suite 12
556 North Nechako Road
Prince George BC
Canada V2K 1A1
Tel 250 561 2229
File No. 2341-6615-E
CPG File No.: SD100493