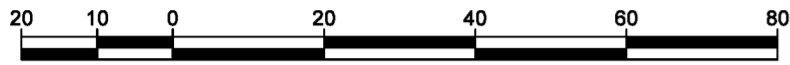


SUBDIVISION PLAN OF LOT A, DISTRICT LOT 10231, CARIBOO DISTRICT, PLAN 17577.

PLAN EPP74493

PURSUANT TO SECTION 67 OF THE LAND TITLE ACT

BCGS 93G.096



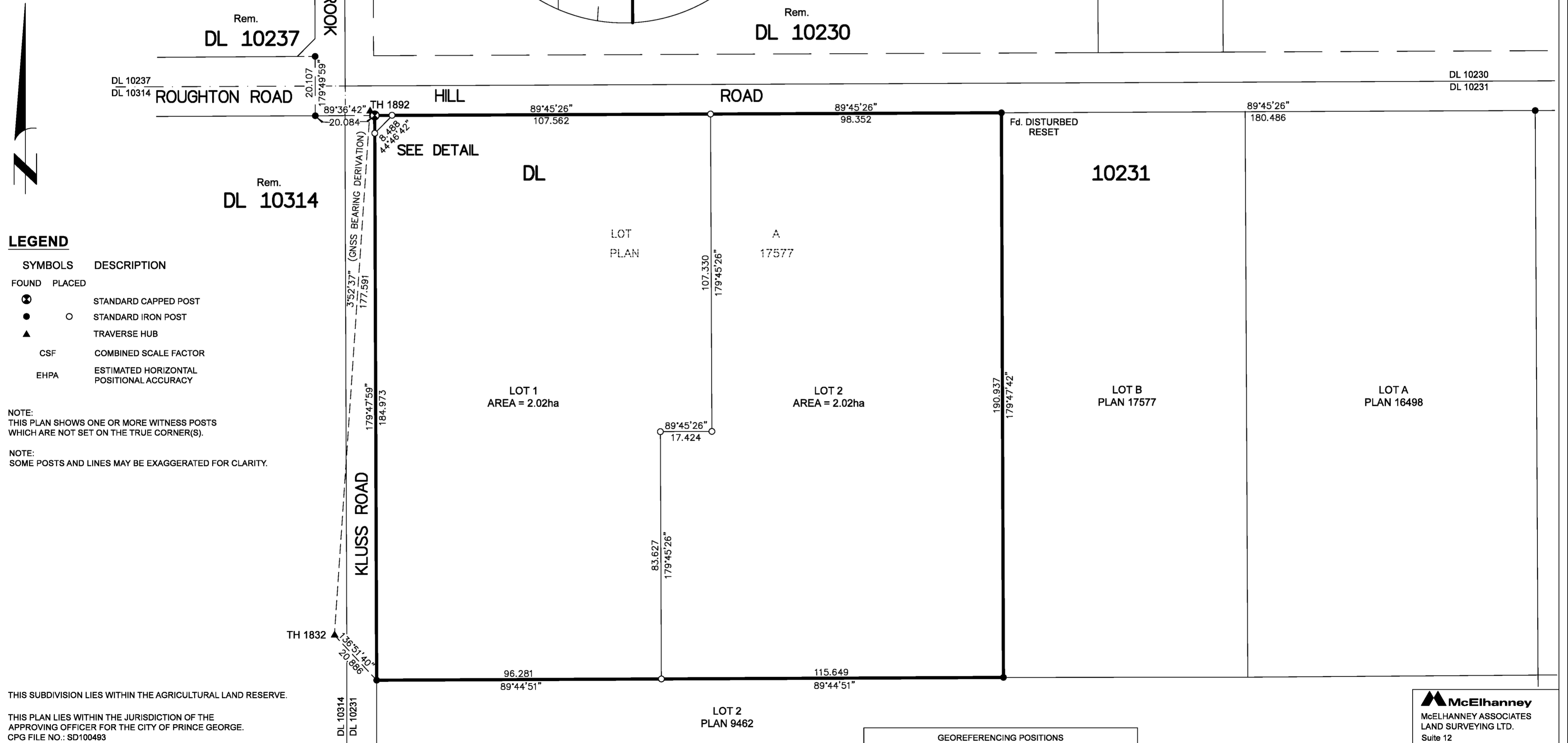
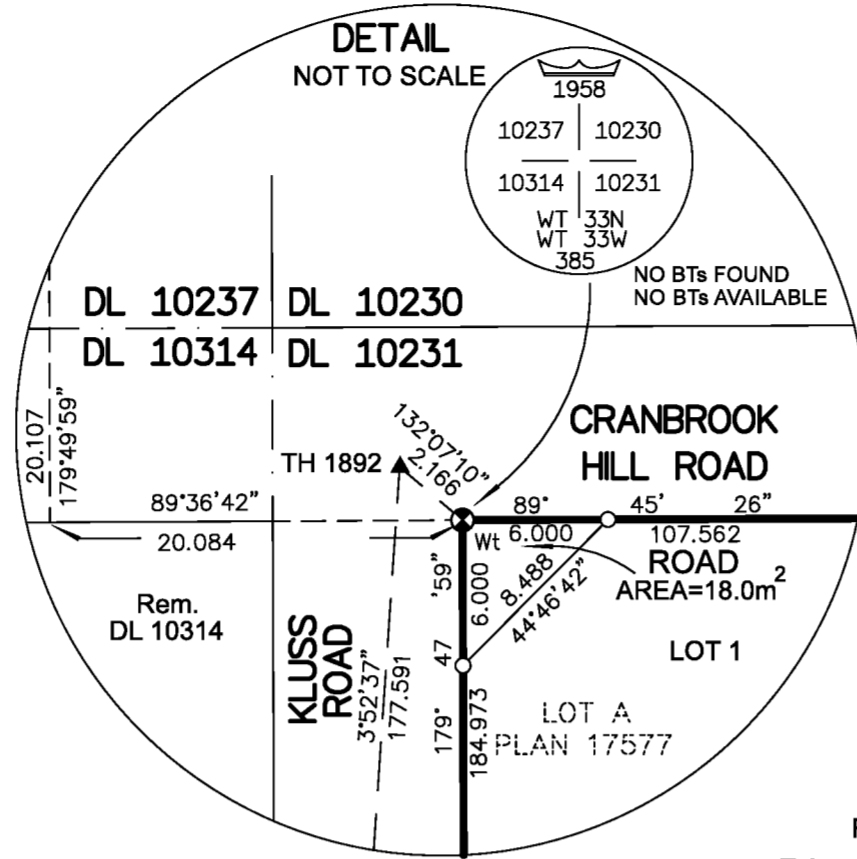
THE INTENDED PLOT SIZE OF THIS PLAN IS 560mm IN WIDTH BY 432mm IN HEIGHT (C SIZE) WHEN PLOTTED AT A SCALE OF 1:1000.

ALL DISTANCES ARE IN METRES AND DECIMALS THEREOF.

GRID BEARINGS ARE DERIVED FROM DIFFERENTIAL DUAL FREQUENCY GNSS OBSERVATIONS AND ARE REFERRED TO THE CENTRAL MERIDIAN OF UTM ZONE 10.

THIS PLAN SHOWS HORIZONTAL GROUND-LEVEL DISTANCES, UNLESS OTHERWISE SPECIFIED. TO COMPUTE GRID DISTANCES, MULTIPLY GROUND-LEVEL DISTANCES BY THE AVERAGE COMBINED FACTOR OF 0.9994800. THE AVERAGE COMBINED FACTOR HAS BEEN DETERMINED BASED ON AN ELLIPSIODAL ELEVATION OF 777.15 METRES.

THE UTM COORDINATES AND ESTIMATED HORIZONTAL POSITIONAL ACCURACY ACHIEVED HAVE BEEN DERIVED FROM DUAL FREQUENCY GNSS OBSERVATIONS PROCESSED USING NATURAL RESOURCES CANADA'S PRECISE POINT POSITIONING SERVICE.



LEGEND

SYMBOLS	DESCRIPTION
FOUND	PLACED
⊙	STANDARD CAPPED POST
●	STANDARD IRON POST
▲	TRAVERSE HUB
CSF	COMBINED SCALE FACTOR
EHPA	ESTIMATED HORIZONTAL POSITIONAL ACCURACY

NOTE: THIS PLAN SHOWS ONE OR MORE WITNESS POSTS WHICH ARE NOT SET ON THE TRUE CORNER(S).

NOTE: SOME POSTS AND LINES MAY BE EXAGGERATED FOR CLARITY.

THIS SUBDIVISION LIES WITHIN THE AGRICULTURAL LAND RESERVE.

THIS PLAN LIES WITHIN THE JURISDICTION OF THE APPROVING OFFICER FOR THE CITY OF PRINCE GEORGE. CPG FILE NO.: SD100493

THE FIELD SURVEY REPRESENTED BY THIS PLAN WAS COMPLETED ON THE 20th DAY OF SEPTEMBER, 2017. DARREN KENT, BCLS 904

THIS PLAN LIES WITHIN THE REGIONAL DISTRICT OF FRASER-FORT GEORGE.

GEOREFERENCING POSITIONS				
UTM COORDINATES, ZONE 10, NAD 83 (CSRS), 2002.0				
STATION	NORTHING	EASTING	EHPA	CSF
TH 1892	5974375.26	510264.40	0.05	0.9994798
TH 1832	5974198.16	510252.40	0.05	0.9994803

McElhanney
 McELHANNEY ASSOCIATES
 LAND SURVEYING LTD.
 Suite 12
 556 North Nechako Road
 Prince George BC
 Canada V2K 1A1
 Tel 250 561 2229

File No. 2341-6615-S
 CPG File No.: SD100493