

**EXPLANATORY PLAN OF STATUTORY  
RIGHT OF WAY OVER PART OF PARCEL B (BEING  
A CONSOLIDATION OF LOTS 5 TO 8, SEE  
CA3075105), BLOCK 150, DISTRICT LOT 343,  
CARIBOO DISTRICT, PLAN 1268.**

**PLAN EPP74491**

PURSUANT TO SECTION 99(1)(e) OF THE LAND TITLE ACT.

INTEGRATED SURVEY AREA No. 39 PRINCE GEORGE, BC, NAD83 (CSRS) 4.0.0.BC.1

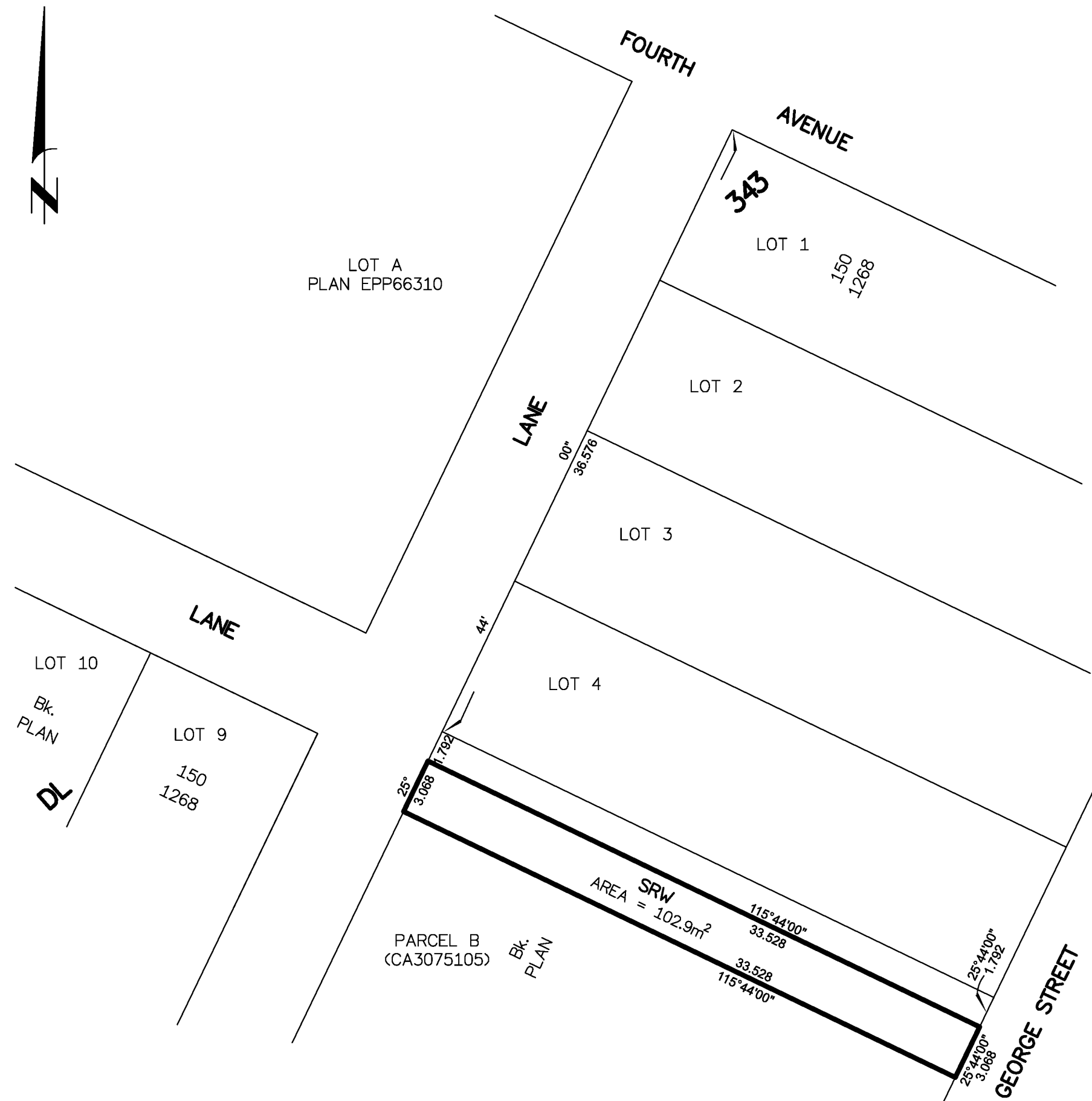
BCGS 93G.097



THE INTENDED PLOT SIZE OF THIS PLAN IS 280mm IN WIDTH BY 432mm IN HEIGHT (B SIZE) WHEN PLOTTED AT A SCALE OF 1:250.

DISTANCES SHOWN ARE HORIZONTAL GROUND-LEVEL DISTANCES IN METRES AND DECIMALS THEREOF AND ARE DERIVED FROM PLAN 1268

BEARINGS ARE ASTRONOMIC AND ARE DERIVED FROM PLAN 1268.



THE PLAN IS BASED ON THE FOLLOWING  
LAND TITLE AND SURVEY AUTHORITY OF BC RECORDS:  
PLAN 1268

DARREN KENT, BCLS 904  
31st DAY OF AUGUST, 2017

THIS PLAN LIES WITHIN THE REGIONAL DISTRICT OF FRASER-FORT GEORGE.

**McElhanney**  
McELHANNEY ASSOCIATES  
LAND SURVEYING LTD.  
Suite 12  
556 North Nechako Road  
Prince George BC  
Canada V2K 1A1  
Tel 250 561 2229

File No. 2341-6591-04-SRW