

REFERENCE PLAN OF STATUTORY RIGHT OF WAY OVER PART OF DISTRICT LOT 2014, CARIBOO DISTRICT EXCEPT PLANS 29514 AND EPP5390

PLAN EPP7449

Pursuant to Section 113
of the Land Title Act.

BCGS 93G.087

THE INTENDED PLOT SIZE OF THIS PLAN IS 432mm IN WIDTH
BY 560mm IN HEIGHT (C SIZE) WHEN PLOTTED AT A SCALE
OF 1:1000

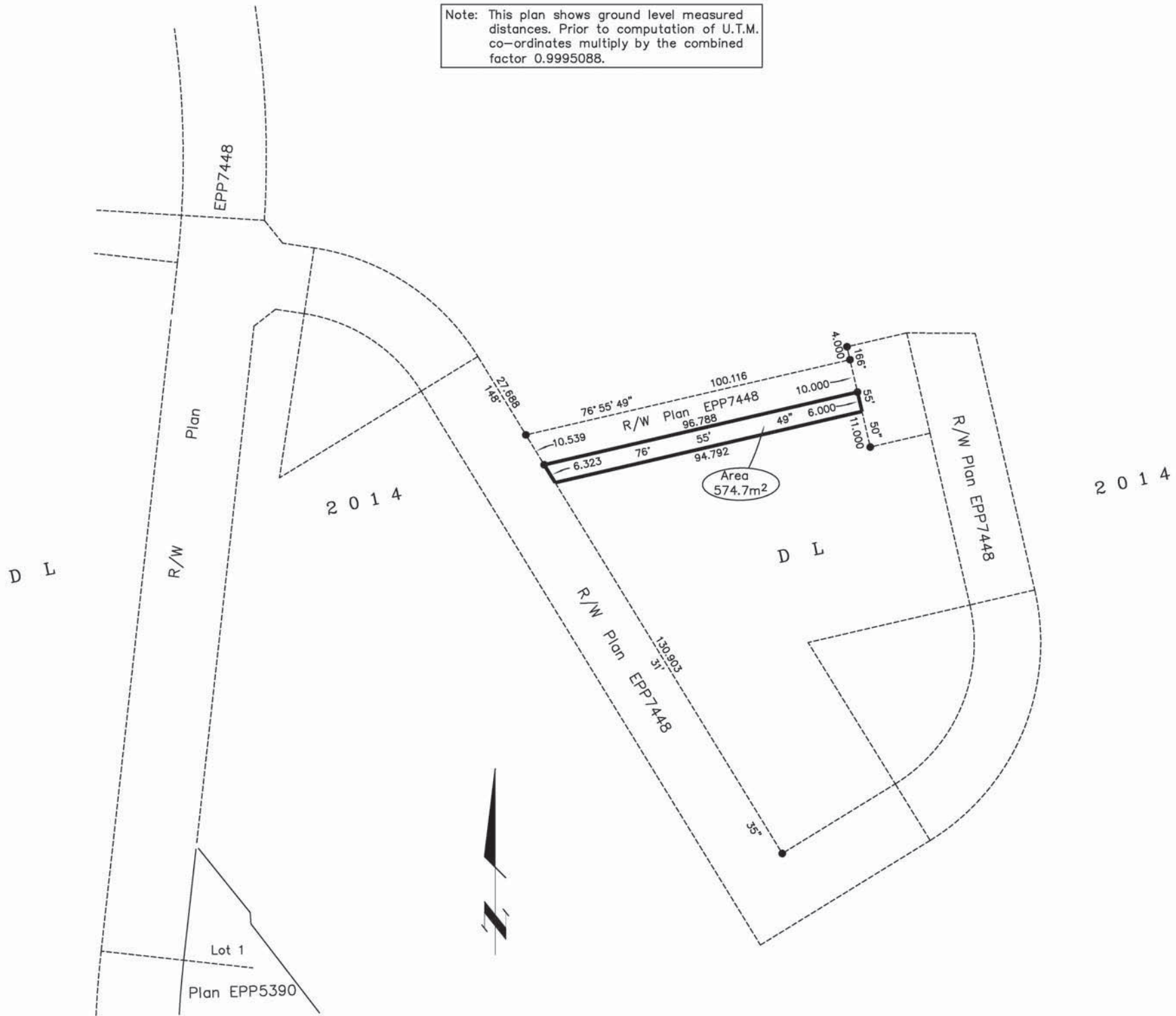


LEGEND

- Standard Iron Post Found
- Standard Iron Post Placed


Grid bearings are derived from plan EPP5390
integrated survey area number 39, City of
Prince George, B.C. NAD83(CSRS)

Note: This plan shows ground level measured
distances. Prior to computation of U.T.M.
co-ordinates multiply by the combined
factor 0.9995088.



The field survey represented by this plan was completed by
Dale Keown, BCLS, on the 15th day of May, 2010.

This plan lies within the Regional District
of Fraser - Fort George.

 McElhanney <i>McElhanney Associates</i> <i>Land Surveying Ltd.</i> Prince George, B.C. Ph: (250) 561-2229 Fax: 563-1941		
F.B.- RA	D.L.- 2014	File No. - 5564-RW3