

SUBDIVISION PLAN OF PART OF LOT B, DISTRICT LOT 7645, PLAN 24979, EXCEPT PLAN EPP4751; AND PART OF BLOCK A, DISTRICT LOTS 4041, 4377 AND 7644, EXCEPT: FIRSTLY; PART SUBDIVIDED BY PLAN PGP43880 SECONDLY; PART SUBDIVIDED BY PLAN PGP43968 THIRDLY; PART SUBDIVIDED BY PLAN BCP18897 FOURTHLY; PART SUBDIVIDED BY PLAN BCP20570 FIFTHLY; PART SUBDIVIDED BY PLAN BCP25435 SIXTHLY; PART SUBDIVIDED BY PLAN BCP37759 SEVENTHLY: PART DEDICATED ROAD ON PLAN EPP4749, ALL IN CARIBOO DISTRICT.

PURSUANT TO SECTION 67 OF THE LAND TITLE ACT

INTEGRATED SURVEY AREA No. 39 PRINCE GEORGE, BC, NAD83 (CSRS) 4.0.0.BC.1

BCGS 93G.097



THE INTENDED PLOT SIZE OF THIS PLAN IS 560mm IN WIDTH BY 432mm IN HEIGHT (C SIZE) WHEN PLOTTED AT A SCALE OF 1:750.

ALL DISTANCES ARE IN METRES AND DECIMALS THEREOF.

GRID BEARINGS ARE DERIVED FROM GNSS OBSERVATIONS BETWEEN GEODETIC CONTROL MONUMENTS 86H1525 AND 86H1568.

THE UTM COORDINATES AND ESTIMATED HORIZONTAL POSITIONAL ACCURACY ACHIEVED HAVE BEEN DERIVED FROM MASCOT PUBLISHED COORDINATES AND STANDARD DEVIATIONS FOR GEODETIC CONTROL MONUMENTS 86H1525 AND 86H1568.

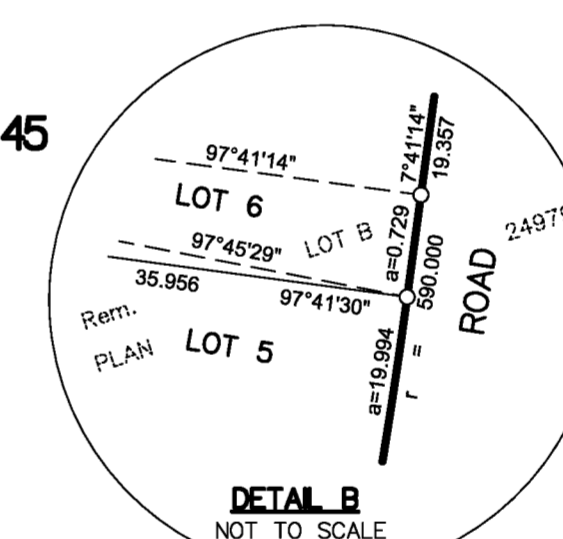
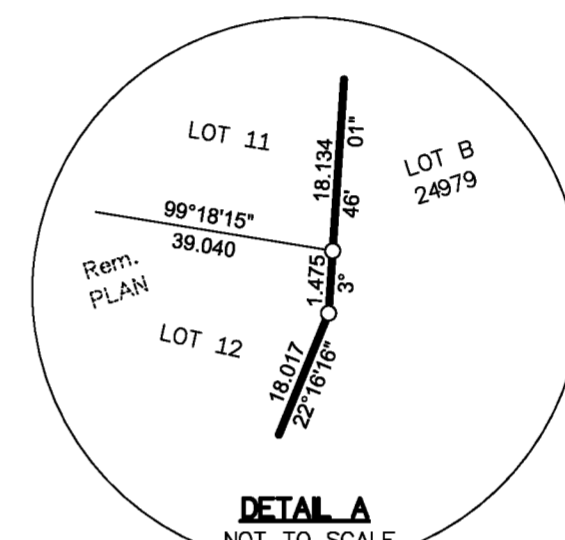
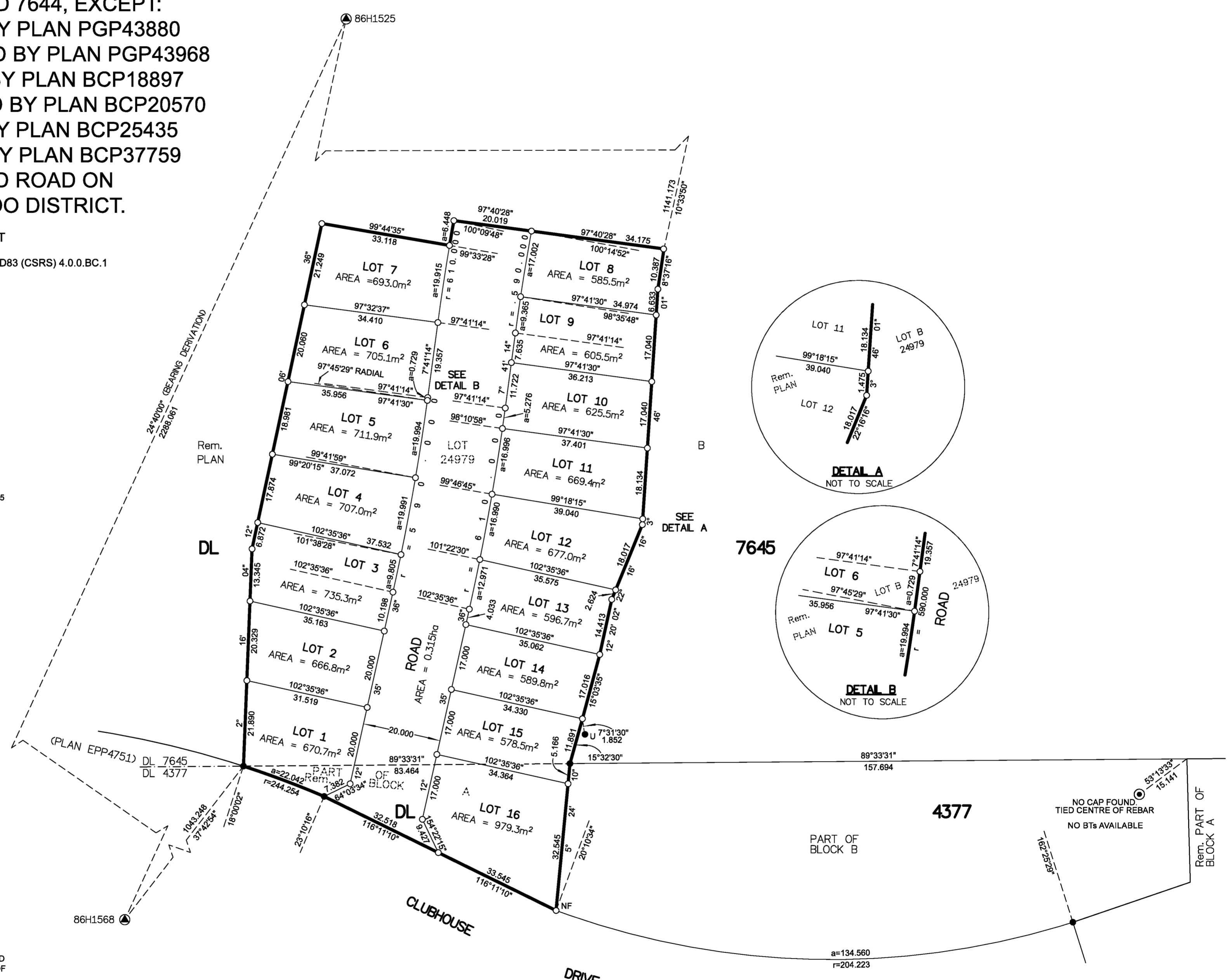
THIS PLAN SHOWS HORIZONTAL GROUND-LEVEL DISTANCES UNLESS OTHERWISE SPECIFIED. TO COMPUTE GRID DISTANCES, MULTIPLY GROUND-LEVEL DISTANCES BY THE AVERAGE COMBINED FACTOR OF 0.9995051 WHICH HAS BEEN DERIVED FROM CONTROL MONUMENTS 86H1525 AND 86H1568.

NOTE: SOME POSTS AND LINES ARE EXAGGERATED FOR CLARITY.

LEGEND

SYMBOLS	DESCRIPTION
FOUND	PLACED
	CONTROL MONUMENT
	STANDARD IRON POST
	STANDARD CONCRETE POST
CSF	COMBINED SCALE FACTOR
EHPA	ESTIMATED HORIZONTAL POSITIONAL ACCURACY
U	UNREGISTERED

GEOREFERENCING POSITIONS				
UTM COORDINATES, ZONE 10, NAD 83 (CSRS), 4.0.0.BC.1				
STATION	NORTHING	EASTING	EHPA	CSF
86H1525	5979317.76	516647.14	0.10	0.9995045
86H1568	5977239.52	515692.72	0.10	0.9995056



THE ASSOCIATION OF BC LAND SURVEYORS HAS GRANTED RELIEF FROM COMPLIANCE WITH GSI RULE 5-4(2) FOR THIS SURVEY SINCE THE STANDARD DEVIATIONS OF THE ISA MONUMENTS DO NOT MEET THE REQUIREMENTS OF SAID RULE.

THIS PLAN LIES WITHIN THE JURISDICTION OF THE APPROVING OFFICER FOR THE CITY OF PRINCE GEORGE.

CPG FILE NO. SD100460

THE FIELD SURVEY REPRESENTED BY THIS PLAN WAS COMPLETED ON THE 30th DAY OF AUGUST, 2017
DARREN KENT, BCLS 904

THIS PLAN LIES WITHIN THE REGIONAL DISTRICT OF FRASER-FORT GEORGE.

McElhanney
 McELHANNEY ASSOCIATES
 LAND SURVEYING LTD.
 Suite 12
 556 North Nechako Road
 Prince George BC
 Canada V2K 1A1
 Tel 250 561 2229

File No. 2341-6307-S
 CPG File No. SD100460