

PLAN EPP7448

REFERENCE PLAN OF STATUTORY RIGHT OF WAY OVER PART OF DISTRICT LOT 2014, CARIBOO DISTRICT EXCEPT PLAN 29514 AND PLAN EPP5390; PART OF LOT 2, DISTRICT LOT 754, CARIBOO DISTRICT PLAN 24418 AND PART OF THE FRACTIONAL SOUTH EAST 1/4 OF DISTRICT LOT 753, CARIBOO DISTRICT EXCEPT PLANS 16085, 16269, 19269, 20078, 20248, 21392, 24369 AND 28450.

Pursuant to Section 113 of the Land Title Act. BCGS 93G.087

THE INTENDED PLOT SIZE OF THIS PLAN IS 560mm IN WIDTH BY 864mm IN HEIGHT (D SIZE) WHEN PLOTTED AT A SCALE OF 1:2000

ALL DISTANCES ARE SHOWN IN METRES AND DECIMALS THEREOF, UNLESS OTHERWISE INDICATED.

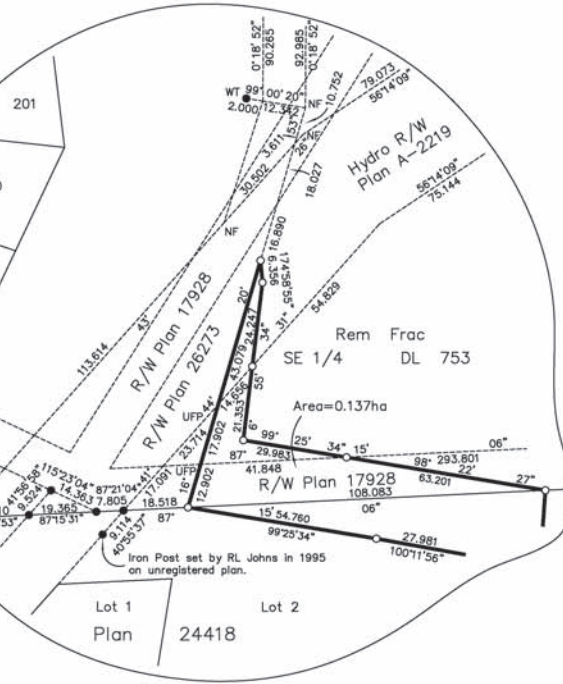
Grid bearings are derived from observations between control monuments 85H1554 and 85H1564, integrated survey area number 39, City of Prince George, B.C. NAD83(CRS)

Note: This plan shows ground-level distances except where otherwise noted. To compute grid distances, multiply ground-level distances by combined factor 0.9995088

This plan shows one or more witness posts which are set along the Note: production of the property boundary unless otherwise noted.

LEGEND

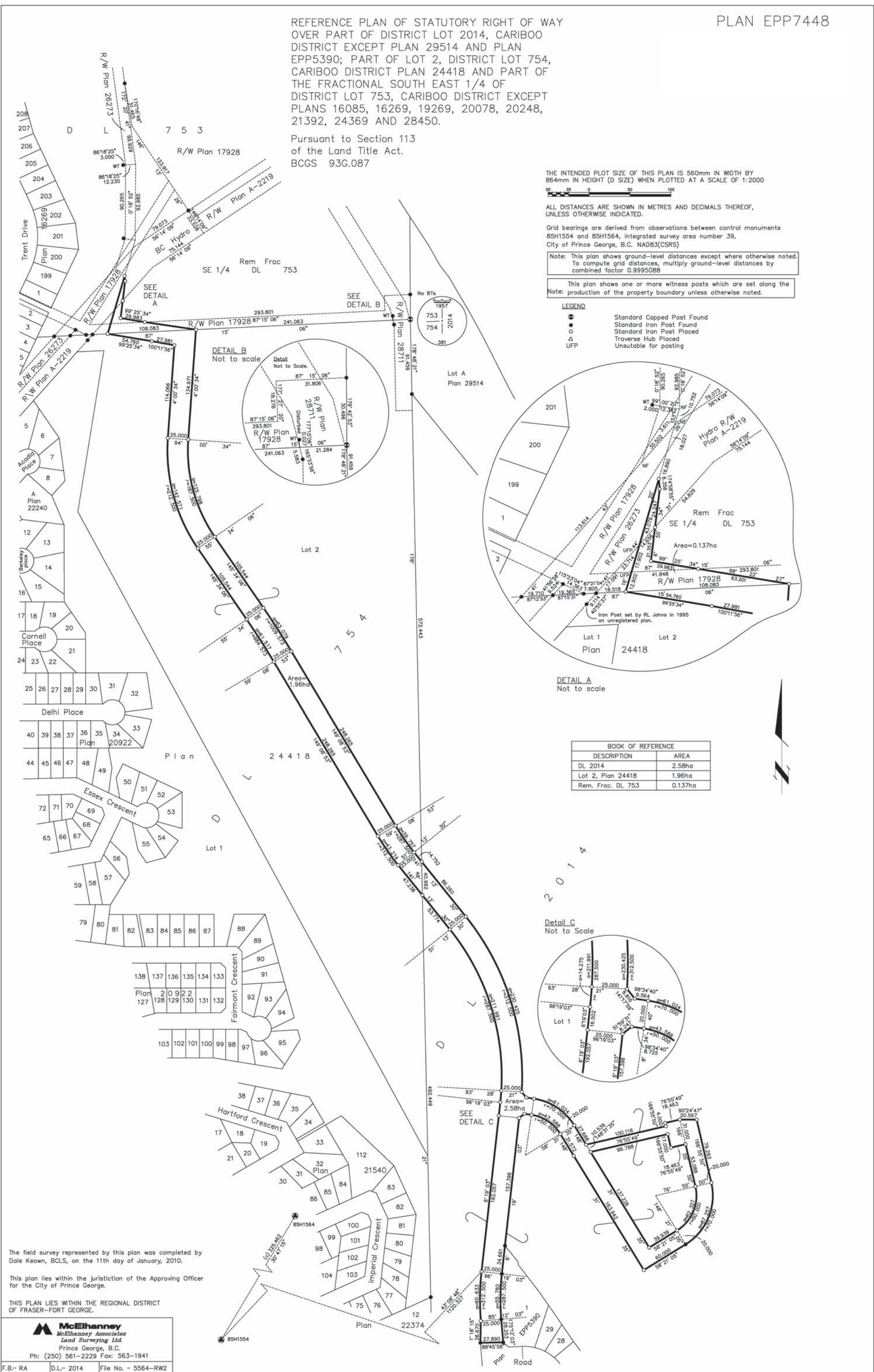
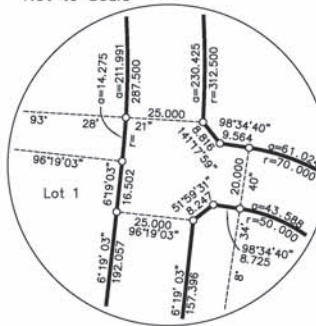
- Standard Capped Post Found
Standard Iron Post Found
Standard Iron Post Placed
Traverse Hub Placed
UFP Unusable for posting



DETAIL A Not to scale

BOOK OF REFERENCE table with columns DESCRIPTION and AREA. Rows include DL 2014 (2.58ha), Lot 2, Plan 24418 (1.96ha), and Rem. Frac. DL 753 (0.137ha).

Detail C Not to Scale



The field survey represented by this plan was completed by Dale Keown, BCLS, on the 11th day of January, 2010. This plan lies within the jurisdiction of the Approving Officer for the City of Prince George. THIS PLAN LIES WITHIN THE REGIONAL DISTRICT OF FRASER-FORT GEORGE.

McElhanney Associates Land Surveying Ltd. Prince George, B.C. Ph: (250) 561-2229 Fax: 563-1941. F.B.- RA D.L.- 2014 File No. - 5564-RW2