

# REFERENCE PLAN OF EASEMENT OVER PART OF LOT A, DISTRICT LOT 745, PLAN EPP62423, AND PART OF LOT 3, DISTRICT LOTS 745 AND 747, PLAN BCP42634, EXCEPT PLAN EPP62423, ALL IN CARIBOO DISTRICT.

PLAN EPP74346

PURSUANT TO SECTION 99(1)(e) OF THE LAND TITLE ACT.  
FOR EASEMENT PURPOSES

INTEGRATED SURVEY AREA No. 39 PRINCE GEORGE, BC, NAD 83 (CSRS) 4.0.0.BC.1

BCGS 93G.087



THE INTENDED PLOT SIZE OF THIS PLAN IS 432 mm IN WIDTH BY 560 mm IN HEIGHT (C SIZE) WHEN PLOTTED AT A SCALE OF 1:500.

ALL DISTANCES ARE IN METRES AND DECIMALS THEREOF.

GRID BEARINGS ARE DERIVED FROM PLAN EPP62423.

THE UTM COORDINATES AND ESTIMATED HORIZONTAL POSITIONAL ACCURACY ACHIEVED HAVE BEEN DERIVED FROM PLAN EPP62423.

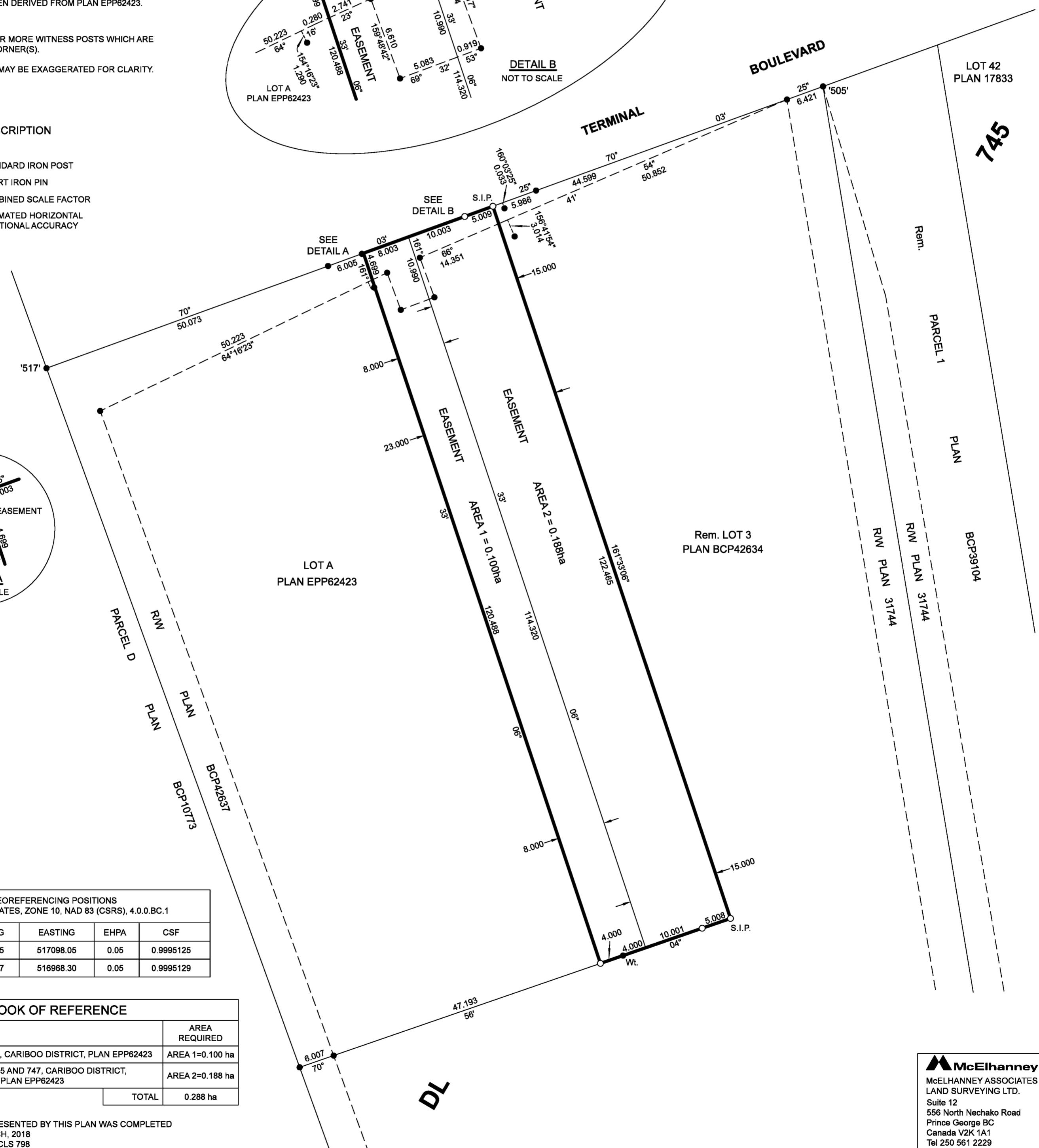
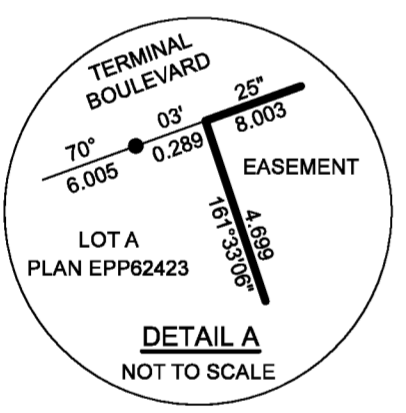
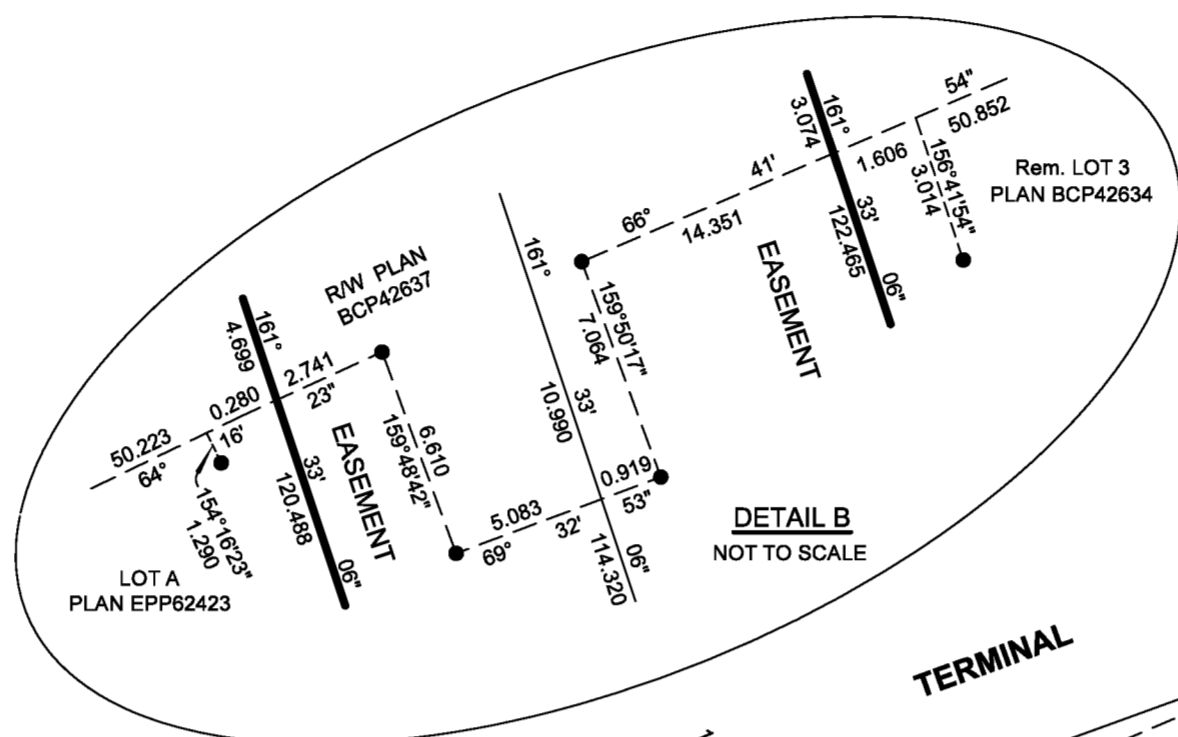
THIS PLAN SHOWS HORIZONTAL GROUND-LEVEL DISTANCES UNLESS OTHERWISE SPECIFIED. TO COMPUTE GRID DISTANCES, MULTIPLY GROUND-LEVEL DISTANCES BY THE AVERAGE COMBINED FACTOR OF 0.9995130 WHICH HAS BEEN DERIVED FROM PLAN EPP62423.

NOTE:  
THIS PLAN SHOWS ONE OR MORE WITNESS POSTS WHICH ARE NOT SET ON THE TRUE CORNER(S).

SOME POSTS AND LINES MAY BE EXAGGERATED FOR CLARITY.

## LEGEND

SYMBOLS	DESCRIPTION
●	FOUND
○	PLACED
●	STANDARD IRON POST
○	S.I.P. SHORT IRON PIN
CSF	COMBINED SCALE FACTOR
EHPA	ESTIMATED HORIZONTAL POSITIONAL ACCURACY



GEOREFERENCING POSITIONS UTM COORDINATES, ZONE 10, NAD 83 (CSRS), 4.0.0.BC.1				
STATION	NORTHING	EASTING	EHPA	CSF
Fd.IP '505'	5969719.75	517098.05	0.05	0.9995125
Fd.IP '517'	5969672.67	516968.30	0.05	0.9995129

BOOK OF REFERENCE	
DESCRIPTION	AREA REQUIRED
LOT A, DISTRICT LOT 745, CARIBOO DISTRICT, PLAN EPP62423	AREA 1=0.100 ha
LOT 3, DISTRICT LOTS 745 AND 747, CARIBOO DISTRICT, PLAN BCP42634 EXCEPT PLAN EPP62423	AREA 2=0.188 ha
TOTAL	0.288 ha

THE FIELD SURVEY REPRESENTED BY THIS PLAN WAS COMPLETED ON THE 2nd DAY OF MARCH, 2018  
SHAUNA C. GOERTZEN, BCLS 798

THIS PLAN LIES WITHIN THE REGIONAL DISTRICT OF FRASER-FORT GEORGE.

**McElhanney**  
McELHANNEY ASSOCIATES  
LAND SURVEYING LTD.  
Suite 12  
556 North Nechako Road  
Prince George BC  
Canada V2K 1A1  
Tel 250 561 2229  
File No. 2341-6408-E