

REFERENCE PLAN OF ROAD DEDICATION OF PART OF THE NORTH EAST 1/4, DISTRICT LOT 750, CARIBOO DISTRICT, EXCEPT PLANS 15470, 16630, 18608, 18991, 20076, 23849, PGP36675, AND PGP42228.

PLAN EPP73945

PURSUANT TO SECTION 107 OF THE LAND TITLE ACT.
FOR ROAD DEDICATION

INTEGRATED SURVEY AREA No. 39 PRINCE GEORGE, BC, NAD83 (CSRS) 4.0.0.BC.1
BCGS 93G.087



THE INTENDED PLOT SIZE OF THIS PLAN IS 560mm IN WIDTH BY 432mm IN HEIGHT (C SIZE) WHEN PLOTTED AT A SCALE OF 1:1250.

ALL DISTANCES ARE IN METRES AND DECIMALS THEREOF.

GRID BEARINGS ARE DERIVED FROM OBSERVATIONS BETWEEN GEODETIC CONTROL MONUMENTS 86H1724 AND 86H1758.

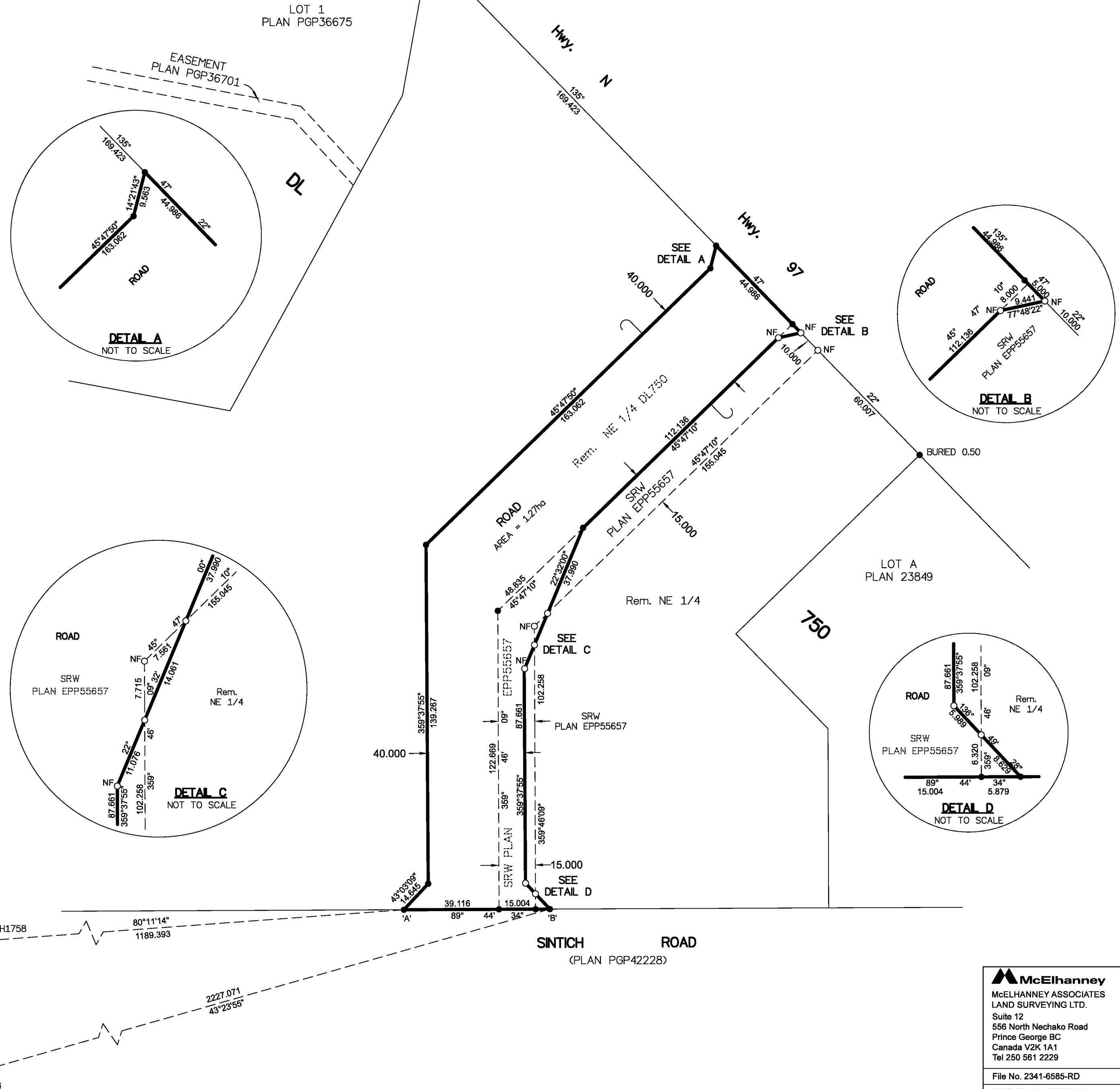
THE UTM COORDINATES AND ESTIMATED HORIZONTAL POSITIONAL ACCURACY ACHIEVED HAVE BEEN DERIVED FROM MASCOT PUBLISHED COORDINATES AND STANDARD DEVIATIONS FOR GEODETIC CONTROL MONUMENT 86H1758.

THIS PLAN SHOWS HORIZONTAL GROUND-LEVEL DISTANCES UNLESS OTHERWISE SPECIFIED. TO COMPUTE GRID DISTANCES, MULTIPLY GROUND-LEVEL DISTANCES BY THE AVERAGE COMBINED FACTOR OF 0.9995132 WHICH HAS BEEN DERIVED FROM GEODETIC CONTROL MONUMENTS 86H1724 AND 86H1758.

LEGEND

| SYMBOLS | DESCRIPTION |
|---------|--|
| ● | FOUND |
| ○ | PLACED |
| ● ○ | STANDARD IRON POST |
| CSF | COMBINED SCALE FACTOR |
| EHPA | ESTIMATED HORIZONTAL POSITIONAL ACCURACY |

| GEOREFERENCING POSITIONS UTM COORDINATES, ZONE 10, NAD 83 (CSRS), 4.0.0.BC.1 | | | | |
|---|------------|-----------|------|-----------|
| STATION | NORTHING | EASTING | EHPA | CSF |
| Fd.IP 'A' | 5966786.68 | 519042.01 | 0.10 | 0.9995024 |
| Fd.IP 'B' | 5966786.94 | 519101.98 | 0.10 | 0.9995025 |



THE ASSOCIATION OF BC LAND SURVEYORS HAS GRANTED RELIEF FROM COMPLIANCE WITH GSI RULE 5-4(2) FOR THIS SURVEY SINCE THE STANDARD DEVIATIONS OF THE ISA MONUMENTS DO NOT MEET THE REQUIREMENTS OF SAID RULE.

THE FIELD SURVEY REPRESENTED BY THIS PLAN WAS COMPLETED ON THE 27th DAY OF JUNE, 2017
SHAUNA C. GOERTZEN, BCLS 798

THIS PLAN LIES WITHIN THE REGIONAL DISTRICT OF FRASER-FORT GEORGE.

McElhanney
McELHANNEY ASSOCIATES
LAND SURVEYING LTD.
Suite 12
556 North Nechako Road
Prince George BC
Canada V2K 1A1
Tel 250 561 2229

File No. 2341-6585-RD
MOTI File No. PS708038