

REFERENCE PLAN OF EASEMENT OVER PART OF LOT A, DISTRICT LOT 954, CARIBOO DISTRICT, PLAN 14964, EXCEPT PLANS 27408 AND EPP66309.

PLAN EPP73005

PURSUANT TO SECTION 99(1)(e) OF THE LAND TITLE ACT.
FOR EASEMENT PURPOSES

INTEGRATED SURVEY AREA No. 39 PRINCE GEORGE, BC, NAD83 (CSRS) 4.0.0.BC.1

BCGS 93G.097



THE INTENDED PLOT SIZE OF THIS PLAN IS 560mm IN WIDTH BY 432mm IN HEIGHT (C SIZE) WHEN PLOTTED AT A SCALE OF 1:300.

ALL DISTANCES ARE IN METRES AND DECIMALS THEREOF.

GRID BEARINGS ARE DERIVED FROM PLAN EPP66309.

THIS PLAN SHOWS HORIZONTAL GROUND-LEVEL DISTANCES UNLESS OTHERWISE SPECIFIED. TO COMPUTE GRID DISTANCES, MULTIPLY GROUND-LEVEL DISTANCES BY THE AVERAGE COMBINED FACTOR OF 0.9995035 WHICH HAS BEEN DERIVED FROM PLAN EPP66309.

THE UTM COORDINATES AND ESTIMATED HORIZONTAL POSITIONAL ACCURACY ACHIEVED HAVE BEEN DERIVED FROM PLAN EPP66309.

LEGEND

SYMBOLS	DESCRIPTION
●	STANDARD IRON POST
CSF	COMBINED SCALE FACTOR
EHPA	ESTIMATED HORIZONTAL POSITIONAL ACCURACY

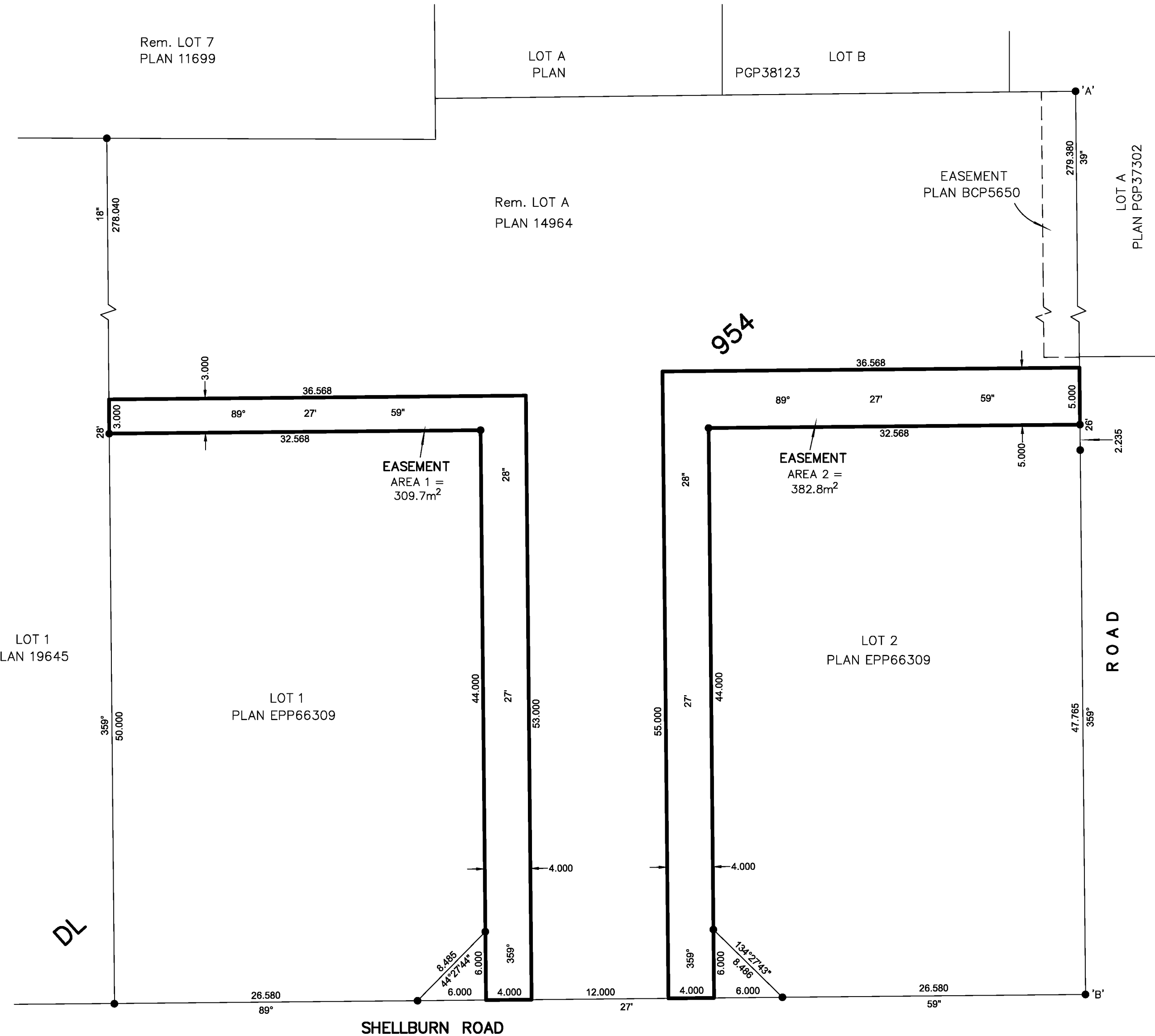
GEOREFERENCING POSITIONS UTM COORDINATES, ZONE 10, NAD 83 (CSRS), 4.0.0.BC.1				
STATION	NORTHING	EASTING	EHPA	CSF
Fd. IP A	5974580.08	523473.42	0.05	0.9995023
Fd. IP B	5974245.89	523476.67	0.05	0.9995039

BOOK OF REFERENCE	
DESCRIPTION	AREA REQUIRED
Rem. LOT A, DISTRICT LOT 954, CARIBOO DISTRICT, PLAN 14964.	AREA 1 = 309.7 m ²
Rem. LOT A, DISTRICT LOT 954, CARIBOO DISTRICT, PLAN 14964.	AREA 2 = 382.8 m ²
TOTAL	AREA = 692.5 m ²

INSPECTED UNDER THE LAND TITLE ACT ON THE
6th OF DECEMBER, 2017.

THE FIELD SURVEY REPRESENTED BY THIS PLAN WAS COMPLETED
ON THE 19th DAY OF SEPTEMBER, 2016
SHAUNA C. GOERTZEN, BCLS 798

THIS PLAN LIES WITHIN THE REGIONAL DISTRICT OF FRASER-FORT GEORGE.



McElhanney
McELHANNEY ASSOCIATES
LAND SURVEYING LTD.
Suite 12
556 North Nechako Road
Prince George BC
Canada V2K 1A1
Tel 250 561 2229

File No. 2341-6483-E-R1