

**EXPLANATORY PLAN OF PARTS OF LOTS 1 TO 4 and 12 DISTRICT LOT 1600, LOTS 6 TO 8 DISTRICT LOT 2616, LOTS 5, 9 TO 10, 11 AND 13 DISTRICT LOTS 1600 AND 2616 ALL OF CARIBOO DISTRICT PLAN EPP72860**

Pursuant to Section 99(1)(e) of the Land Title Act  
For Easement Purposes

BCGS 93G.086, 93G.087



The intended plot size of this plan is 864mm in width by 560mm in height (D size) when plotted at a scale of 1:500.

All distances are in metres and decimals thereof.

Bearings are grid derived from Plan EPP72860.

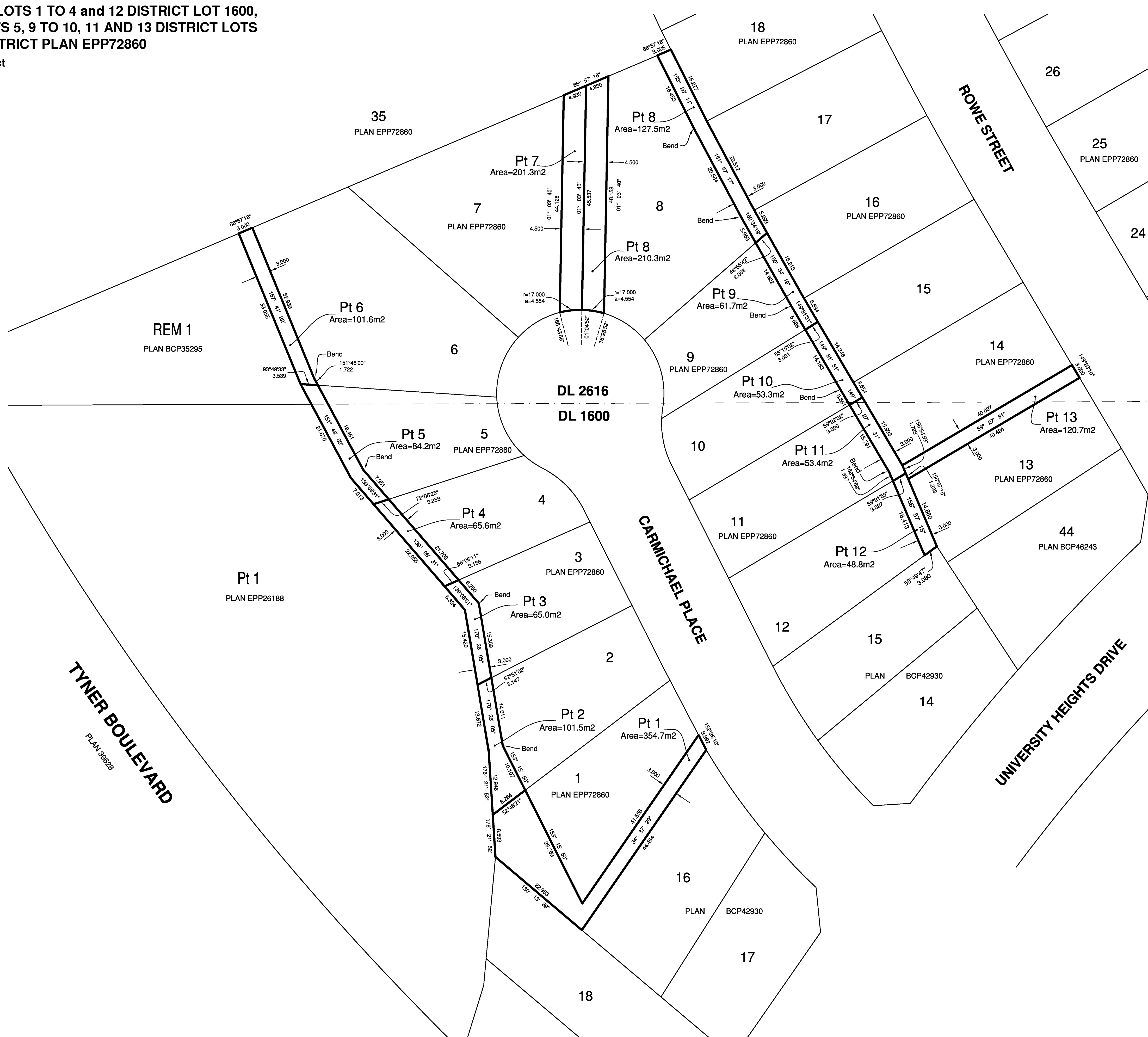
This plan shows horizontal ground level distances except where otherwise noted. To compute grid distances, multiply ground-level distances by combined factor of 0.99953035, which has been derived from Plan EPP72860.

**LEGEND**

- m<sup>2</sup> denotes Square Meter(s)
- Pt denotes Part
- REM denotes Remainder
- SRW denotes Statutory Right of Way



BOOK OF REFERENCE	
PART OF	AREA
Lot 1 District Lot 1600 Cariboo District Plan EPP72860	354.7 m <sup>2</sup>
Lot 2 District Lot 1600 Cariboo District Plan EPP72860	101.5 m <sup>2</sup>
Lot 3 District Lot 1600 Cariboo District Plan EPP72860	65.0 m <sup>2</sup>
Lot 4 District Lot 1600 Cariboo District Plan EPP72860	65.6 m <sup>2</sup>
Lot 5 District Lots 1600 and 2616 Cariboo District Plan EPP72860	84.2 m <sup>2</sup>
Lot 6 District Lot 2616 Cariboo District Plan EPP72860	101.6 m <sup>2</sup>
Lot 7 District Lot 2616 Cariboo District Plan EPP72860	201.3 m <sup>2</sup>
Lot 8 District Lot 2616 Cariboo District Plan EPP72860	337.8 m <sup>2</sup>
Lot 9 District Lots 1600 and 2616 Cariboo District Plan EPP72860	61.7 m <sup>2</sup>
Lot 10 District Lots 1600 and 2616 Cariboo District Plan EPP72860	53.3 m <sup>2</sup>
Lot 11 District Lot 1600 and 2616 Cariboo District Plan EPP72860	53.4 m <sup>2</sup>
Lot 12 District Lot 1600 Cariboo District Plan EPP72860	48.8 m <sup>2</sup>
Lot 13 District Lots 1600 and 2616 Cariboo District Plan EPP72860	120.7 m <sup>2</sup>



**TYNER BOULEVARD**  
PLAN 96628

**UNIVERSITY HEIGHTS DRIVE**

**wsp**  
WSP Surveys (BC) Limited Partnership  
300-65 Richmond St. New Westminster, BC  
PROJECT REF./DRAWING No.  
171-06644-00-000-00-SUBES001-R0

This plan lies within the Regional District of Fraser-Fort George  
This plan is based on the following Land Title and Survey Authority of BC records: EPP72860  
Sandra A. Wards, BCLS 834  
10th day of August, 2017  
ECR# 202037