

**SUBDIVISION PLAN OF:**  
**PART OF LOT 1 DISTRICT LOT 905 PLAN BCP22408**  
**EXCEPT PLANS BCP46243, EPP17616, EPP30392 AND EPP51089;**  
**PART OF LOT 1 DISTRICT LOT 2616 PLAN BCP35295**  
**EXCEPT PLANS BCP46243, EPP17616 AND EPP51089;**  
**THE NORTH EAST 1/4 OF THE NORTH EAST 1/4 OF DISTRICT LOT 1600**  
**EXCEPT PLANS PGP39628, BCP42930, BCP46243 AND EPP26188**  
**ALL OF CARIBOO DISTRICT**

BCGS 93G.086, 93G.087

The intended plot size of this plan is 1118mm in width by 864mm in height (E size) when plotted at a scale of 1:750.

All distances are in metres and decimals thereof.

Integrated Survey Area No. 39, City of Prince George, NAD83 (CSRS) 4.0.0.BC.1.

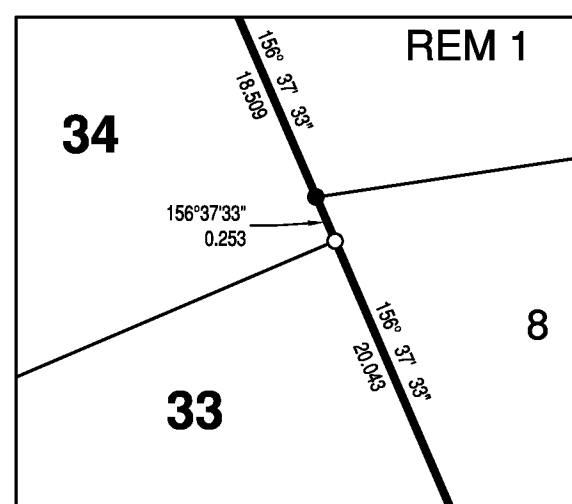
Grid bearings are derived from observations between geodetic control monuments 86H1832 and 86H1829.

The UTM coordinates and estimated horizontal positional accuracy achieved are derived from MASCOIT published coordinates and standard deviations for geodetic control monuments 86H1832 and 86H1829.

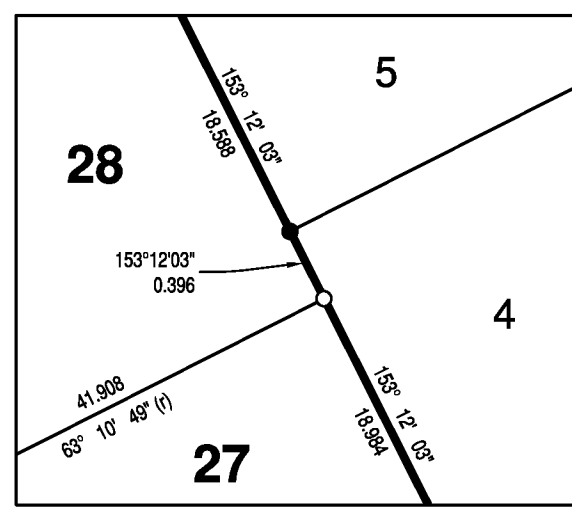
This plan shows horizontal ground-level distances unless otherwise specified. To compute grid distances, multiply ground-level distances by the average combined factor of 0.9995035 which has been derived from geodetic control monument 86H1829 (GCM #931974).

**LEGEND**

- ⊙ denotes control monument found
- denotes standard iron post found
- denotes standard iron post placed
- FNE denotes found no evidence
- ha denotes hectares
- m<sup>2</sup> denotes square meter(s)
- REM denotes remainder
- SRW denotes statutory right of way



**DETAIL A**



**DETAIL B**



86H1832  
UTM Zone: 10 North  
Datum: NAD83(CSRS) 4.0.0.BC.1  
UTM Northing: 5999554.141  
UTM Easting: 514306.751  
Point Combined Factor: 0.9995035  
Estimated Horizontal Positional Accuracy: 0.03m

86H1829  
UTM Zone: 10 North  
Datum: NAD83(CSRS) 4.0.0.BC.1  
UTM Northing: 5999564.788  
UTM Easting: 514402.143  
Point Combined Factor: 0.9995035  
Estimated Horizontal Positional Accuracy: 0.03m