

# SUBDIVISION PLAN

OF LOTS 6 AND 7 DISTRICT LOT 1605 CARIBOO DISTRICT  
PLAN EPP8499

PLAN EPP72162

BCGS 93G.087



The intended plot size of this plan is 432mm in width by 560mm in height (C size) when plotted at a scale of 1:250.

Distances are horizontal ground level distances and decimals thereof unless otherwise denoted.

**LEGEND**

Bearings are NAD83 (CSRS) Grid and are derived from Global Navigation Satellite System Observations to Geodetic Control Monument No.150623 and Geodetic Control Monument No.822098 and are referred to the Central Meridian of UTM Zone 10 North.

The UTM Coordinates and Estimated Network horizontal accuracy are derived from Global Navigation Satellite System Observations to Geodetic Control Monument No.150623 and Geodetic Control Monument No.822098.

This plan shows horizontal ground-level distances. To compute grid distances, multiply ground level distances by the average combined factor 0.9995088. The average combined factor has been determined based on an ellipsoidal elevation of 601.29 metres.

Integrated Survey Area 39, Prince George.

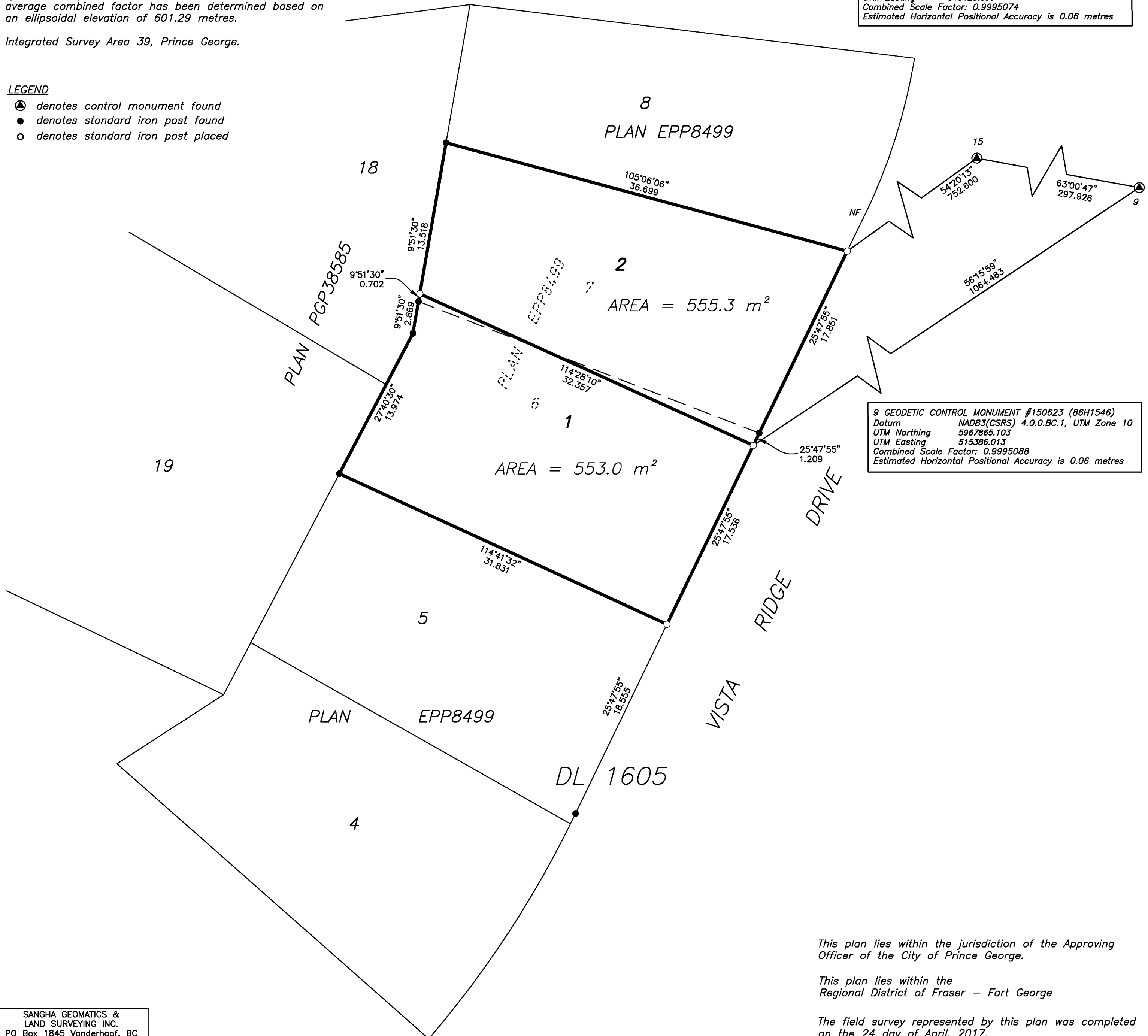
**LEGEND**

- ⊙ denotes control monument found
- denotes standard iron post found
- denotes standard iron post placed



15 GEODETIC CONTROL MONUMENT #822098 (86H1821)  
Datum NAD83(CSRS) 4.0.0.BC.1, UTM Zone 10  
UTM Northing 5967729.975  
UTM Easting 515120.699  
Combined Scale Factor: 0.9995074  
Estimated Horizontal Positional Accuracy is 0.06 metres

9 GEODETIC CONTROL MONUMENT #150623 (86H1546)  
Datum NAD83(CSRS) 4.0.0.BC.1, UTM Zone 10  
UTM Northing 5967865.103  
UTM Easting 515386.013  
Combined Scale Factor: 0.9995088  
Estimated Horizontal Positional Accuracy is 0.06 metres



This plan lies within the jurisdiction of the Approving Officer of the City of Prince George.

This plan lies within the Regional District of Fraser – Fort George

The field survey represented by this plan was completed on the 24 day of April, 2017.  
Manjit Sangha, B.C.L.S. (939)