

PLAN EPP72103

REFERENCE PLAN OF CONSOLIDATION OF
 LOT A, PLAN EPP69256; LOT 1, PLAN EPP25204; E1/2
 LOT 5, BLOCK 10, PLAN 837; AND CLOSED ROAD,
 PLAN EPP72102; ALL IN DISTRICT LOT 2508,
 CARIBOO DISTRICT.

PURSUANT TO SECTION 100(1)(b) OF THE LAND TITLE ACT.
 INTEGRATED SURVEY AREA No. 39 PRINCE GEORGE, BC, NAD83 (CSRS) 4.0.0.BC.1
 BCGS 93G.096



THE INTENDED PLOT SIZE OF THIS PLAN IS 560mm IN WIDTH BY 432mm IN HEIGHT (C SIZE) WHEN PLOTTED AT A SCALE OF 1:1000.

ALL DISTANCES ARE IN METRES AND DECIMALS THEREOF.

GRID BEARINGS ARE DERIVED FROM OBSERVATIONS BETWEEN GEODETIC CONTROL MONUMENTS 85H1310 AND 85H1206.

THE UTM COORDINATES AND ESTIMATED HORIZONTAL POSITIONAL ACCURACY ACHIEVED HAVE BEEN DERIVED FROM MASCOT PUBLISHED COORDINATES AND STANDARD DEVIATIONS FOR GEODETIC CONTROL MONUMENT 85H1310.

THIS PLAN SHOWS HORIZONTAL GROUND-LEVEL DISTANCES UNLESS OTHERWISE SPECIFIED. TO COMPUTE GRID DISTANCES, MULTIPLY GROUND-LEVEL DISTANCES BY THE COMBINED FACTOR OF 0.9995089 WHICH HAS BEEN DERIVED FROM GEODETIC CONTROL MONUMENT 85H1310.

LEGEND

- | | |
|----------------|--|
| SYMBOLS | DESCRIPTION |
| FOUND PLACED | |
| ▲ | CONTROL MONUMENT |
| ● | STANDARD IRON POST |
| ○ | STANDARD CONCRETE POST |
| CSF | COMBINED SCALE FACTOR |
| EHPA | ESTIMATED HORIZONTAL POSITIONAL ACCURACY |

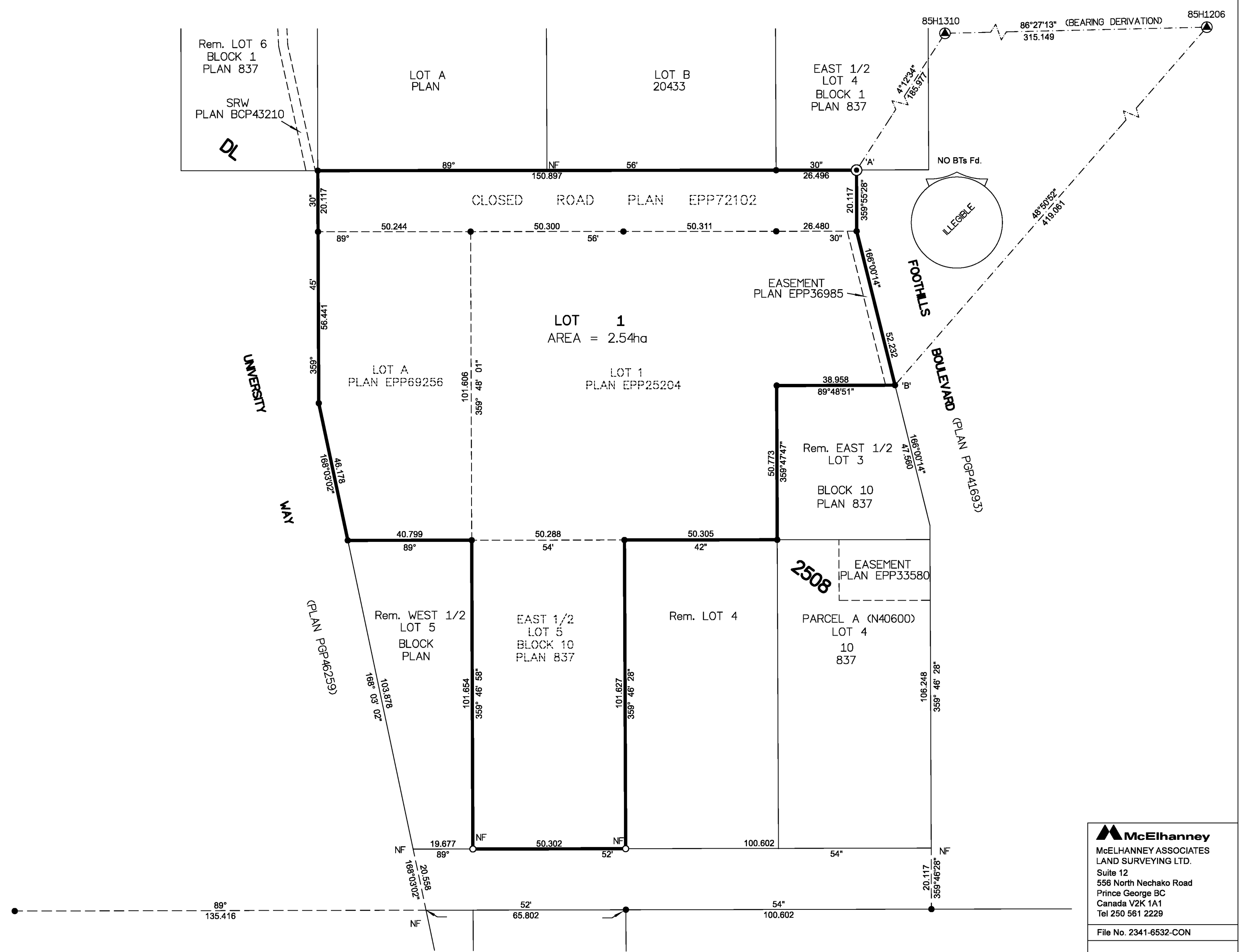
GEOREFERENCING POSITIONS				
UTM COORDINATES, ZONE 10, NAD 83 (CSRS), 4.0.0.BC.1				
STATION	NORTHING	EASTING	EHPA	CSF
Fd. P.Con 'A'	5973363.51	512358.67	0.10	0.9995089
Fd. IP 'B'	5973292.74	512371.33	0.10	0.9995089



THE ASSOCIATION OF BC LAND SURVEYORS HAS GRANTED RELIEF FROM COMPLIANCE WITH GSI RULE 5-4(2) FOR THIS SURVEY SINCE THE STANDARD DEVIATIONS OF THE ISA MONUMENTS DO NOT MEET THE REQUIREMENTS OF SAID RULE.

THE FIELD SURVEY REPRESENTED BY THIS PLAN WAS COMPLETED ON THE 12TH DAY OF MAY, 2017
 SHAUNA C. GOERTZEN, BCLS 798

THIS PLAN LIES WITHIN THE REGIONAL DISTRICT OF FRASER-FORT GEORGE.



McElhanney
 McELHANNEY ASSOCIATES
 LAND SURVEYING LTD.
 Suite 12
 556 North Nechako Road
 Prince George BC
 Canada V2K 1A1
 Tel 250 561 2229

File No. 2341-6532-CON