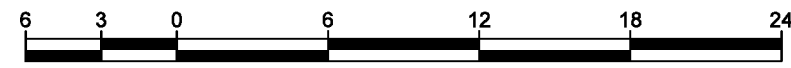


# EXPLANATORY PLAN TO ACCOMPANY LEASE OF A PORTION OF THE GROUND FLOOR OF A BUILDING ON PARCEL 1, DISTRICT LOT 629, CARIBOO DISTRICT, PLAN BCP18209, EXCEPT PLAN EPP6906.

PLAN EPP71904

PURSUANT TO SECTION 99(1)(k) OF THE LAND TITLE ACT.

INTEGRATED SURVEY AREA No. 39 PRINCE GEORGE, BC, NAD83 (CSRS) 4.0.0.BC.1  
BCGS 93G.097



THE INTENDED PLOT SIZE OF THIS PLAN IS 560mm IN WIDTH BY 432mm IN HEIGHT (C SIZE) WHEN PLOTTED AT A SCALE OF 1:300.

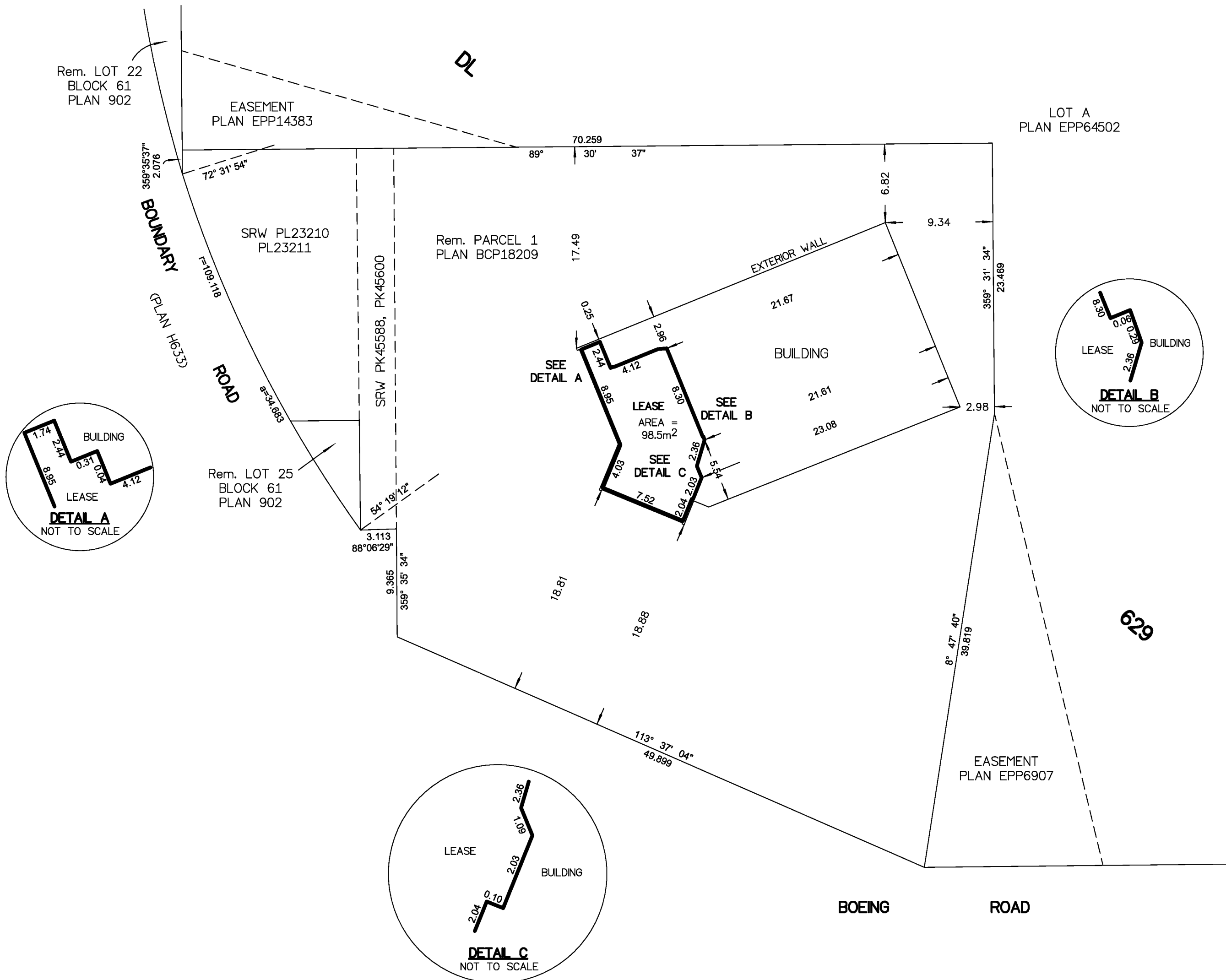
ALL DISTANCES ARE IN METRES AND DECIMALS THEREOF.

THIS PLAN SHOWS HORIZONTAL GROUND-LEVEL DISTANCES UNLESS OTHERWISE SPECIFIED.

NOTE:  
LEASE DIMENSIONS ARE MEASURED TO THE INSIDE FINISH OF THE EXTERIOR WALL AND TO THE CENTRELINE OF THE INTERIOR WALL.

BEARINGS ARE GRID DERIVED FROM PLAN EPP64502.

DIMENSIONS ARE DERIVED FROM PLAN EPP64502.



THIS PLAN IS BASED ON THE FOLLOWING  
LAND TITLE AND SURVEY AUTHORITY OF BC RECORDS:  
PLAN EPP64502  
PLAN BCP18209

SHAUNA C. GOERTZEN, BCLS 798  
12th DAY OF MAY, 2017

THIS PLAN LIES WITHIN THE REGIONAL DISTRICT OF FRASER-FORT GEORGE.

**McElhanney**  
MCELHANNEY ASSOCIATES  
LAND SURVEYING LTD.  
Suite 12  
556 North Nechako Road  
Prince George BC  
Canada V2K 1A1  
Tel 250 561 2229

---

File No. 2341-6548-L