

**EXPLANATORY PLAN TO ACCOMPANY LEASE OF A PORTION
OF A BUILDING ON PARCEL A (L4391) OF BLOCK 47,
DISTRICT LOT 343, CARIBOO DISTRICT, PLAN 1268.**

PLAN EPP71901

PURSUANT TO SECTION 99(1)(k) OF THE LAND TITLE ACT.

INTEGRATED SURVEY AREA No. 39 PRINCE GEORGE, BC, NAD83 (CSRS) 4.0.0.BC.1

BCGS 93G.097



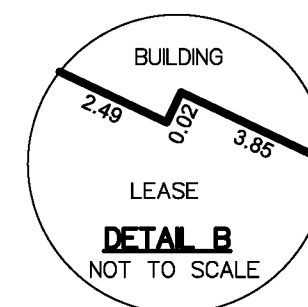
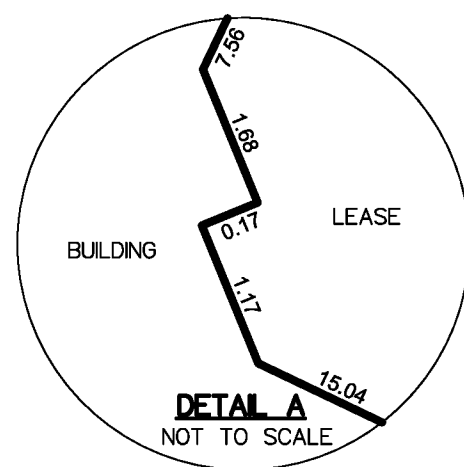
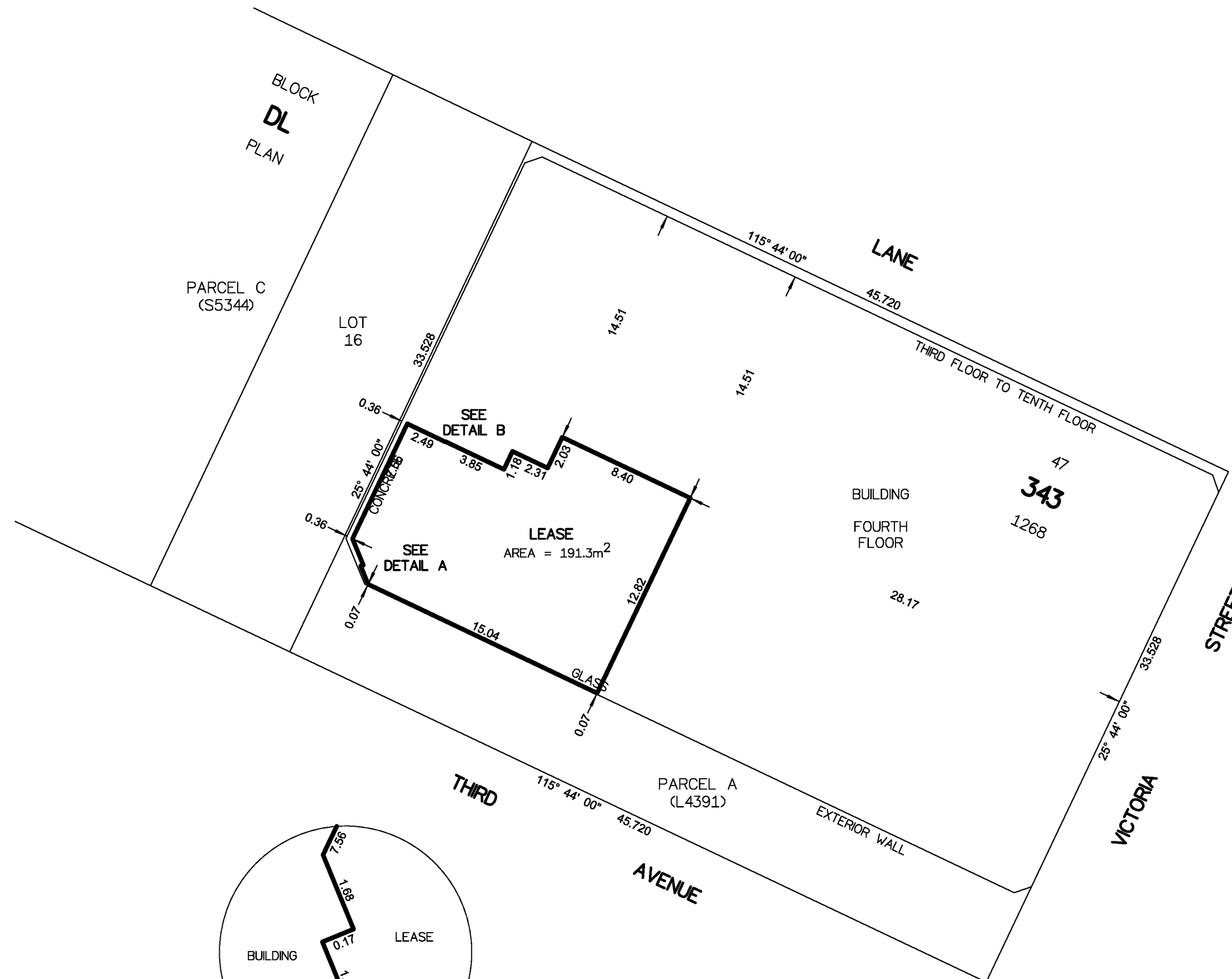
THE INTENDED PLOT SIZE OF THIS PLAN IS 560mm IN WIDTH BY 432mm IN HEIGHT (C SIZE) WHEN PLOTTED AT A SCALE OF 1:250.

ALL DISTANCES ARE IN METRES AND DECIMALS THEREOF. THIS PLAN SHOWS HORIZONTAL GROUND-LEVEL DISTANCES UNLESS OTHERWISE SPECIFIED.

BEARINGS ARE ASTRONOMIC DERIVED FROM PLAN 1268.

DIMENSIONS DERIVED FROM PLAN 1268.

NOTE:
LEASE DIMENSIONS ARE MEASURED TO INTERIOR GLASS OR FINISHED SURFACE OF EXTERIOR WALLS AND CENTERLINE OF INTERIOR WALLS.



THIS PLAN IS BASED ON THE FOLLOWING
LAND TITLE AND SURVEY AUTHORITY OF BC RECORDS:
PLAN 1268

SHAUNA C. GOERTZEN, BCLS 798
5th DAY OF MAY, 2017

THIS PLAN LIES WITHIN THE REGIONAL DISTRICT OF FRASER-FORT GEORGE.

McElhanney
McELHANNEY ASSOCIATES
LAND SURVEYING LTD.
Suite 12
556 North Nechako Road
Prince George BC
Canada V2K 1A1
Tel 250 561 2229
File No. 2341-6557-L