

**REFERENCE PLAN TO ACCOMPANY ROAD CLOSURE
BY-LAW No. 8737 (PRINCE GEORGE) TO CLOSE PART
OF ROAD DEDICATED ON PLAN 1360, DISTRICT LOT 2166,
AND PART OF ROAD DEDICATED ON PLAN 9233,
DISTRICT LOT 823, CARIBOO DISTRICT.**

PLAN EPP71563

PURSUANT TO SECTION 120 OF THE LAND TITLE ACT AND SECTION 40 OF THE COMMUNITY CHARTER.

INTEGRATED SURVEY AREA No. 39 PRINCE GEORGE, BC, NAD83 (CSRS) 4.0.0.BC.1

BCGS 93G.097



THE INTENDED PLOT SIZE OF THIS PLAN IS 432mm IN WIDTH BY 580mm IN HEIGHT (C SIZE) WHEN PLOTTED AT A SCALE OF 1:1250.

ALL DISTANCES ARE IN METRES AND DECIMALS THEREOF.

GRID BEARINGS ARE DERIVED FROM OBSERVATIONS BETWEEN GEODETIC CONTROL MONUMENTS 86H1596 AND 86H1577.

THE UTM COORDINATES AND ESTIMATED HORIZONTAL POSITIONAL ACCURACY ACHIEVED HAVE BEEN DERIVED FROM MASCOT PUBLISHED COORDINATES AND STANDARD DEVIATIONS FOR GEODETIC CONTROL MONUMENT 86H1596.

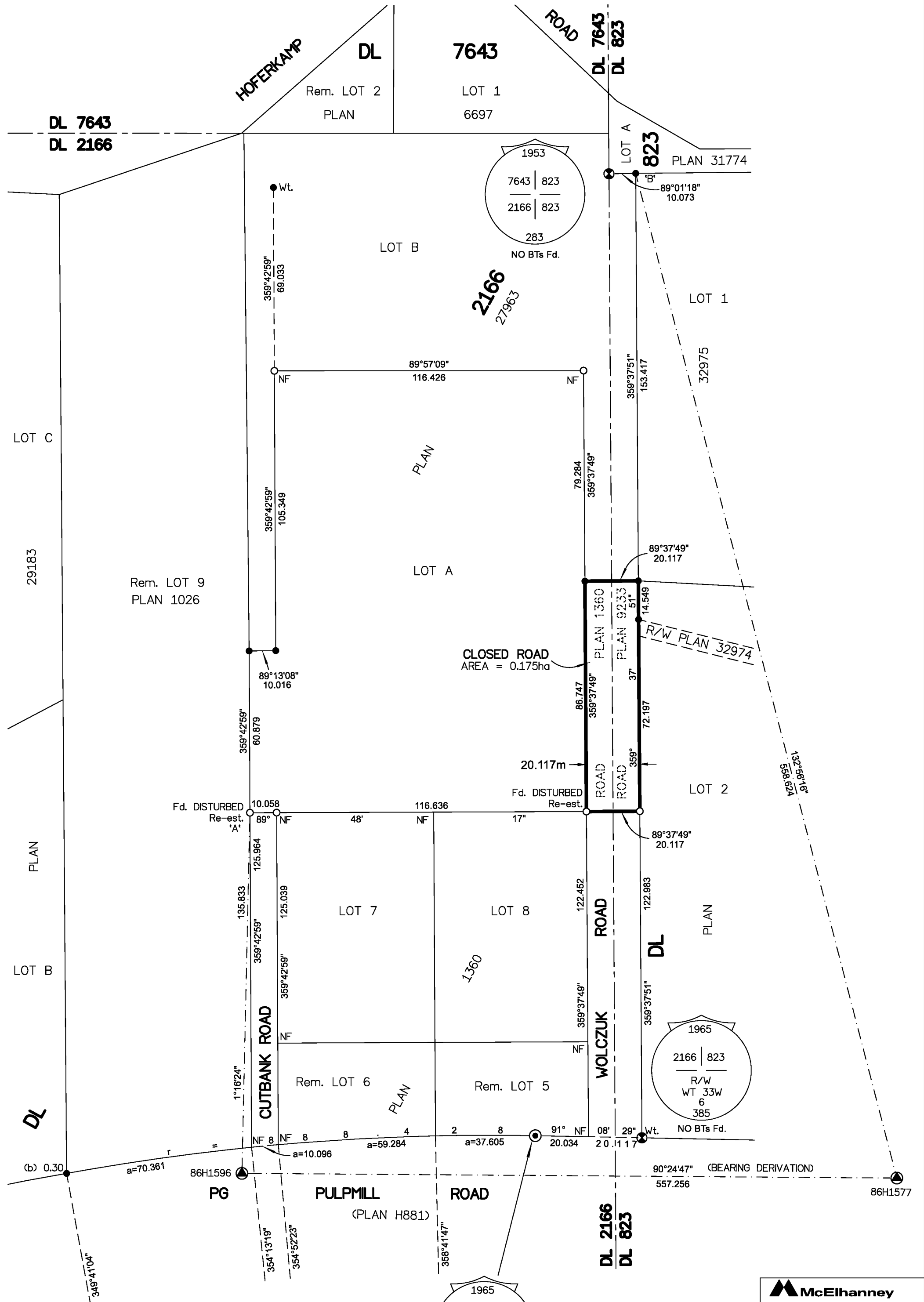
THIS PLAN SHOWS HORIZONTAL GROUND-LEVEL DISTANCES UNLESS OTHERWISE SPECIFIED. TO COMPUTE GRID DISTANCES, MULTIPLY GROUND-LEVEL DISTANCES BY THE AVERAGE COMBINED FACTOR OF 0.9995161 WHICH HAS BEEN DERIVED FROM GEODETIC CONTROL MONUMENT 86H1596.

LEGEND

SYMBOLS	DESCRIPTION
FOUND PLACED	
▲	CONTROL MONUMENT
● ○	STANDARD IRON POST
⊙	STANDARD CONCRETE POST
⦿	STANDARD CAPPED POST
CSF	COMBINED SCALE FACTOR
EHPA	ESTIMATED HORIZONTAL POSITIONAL ACCURACY
(b)	BURIED

NOTE:
THIS PLAN SHOWS ONE OR MORE WITNESS POSTS WHICH ARE NOT SET ON THE TRUE CORNER(S).

GEOREFERENCING POSITIONS UTM COORDINATES, ZONE 10, NAD 83 (CSRS), 4.0.0.BC.1				
STATION	NORTHING	EASTING	EHPA	CSF
PLIP'A	5975873.50	516810.14	0.12m	0.9995161
Fd.IP'B	5976114.10	516955.33	0.12m	0.9995161



THE ASSOCIATION OF BC LAND SURVEYORS HAS GRANTED RELIEF FROM COMPLIANCE WITH GSI RULE 5-4(2) FOR THIS SURVEY SINCE THE STANDARD DEVIATIONS OF THE ISA MONUMENTS DO NOT MEET THE REQUIREMENTS OF SAID RULE.

THE FIELD SURVEY REPRESENTED BY THIS PLAN WAS COMPLETED ON THE 27th DAY OF MARCH, 2017
SHAUNA C. GOERTZEN, BCLS 798

THIS PLAN LIES WITHIN THE REGIONAL DISTRICT OF FRASER-FORT GEORGE.

McElhanney
McELHANNEY ASSOCIATES
LAND SURVEYING LTD.
Suite 12
556 North Nechako Road
Prince George BC
Canada V2K 1A1
Tel 250 561 2229
File No. 2341-6535-RC