

EXPLANATORY PLAN OF EASEMENT OVER PART OF LOTS 2, 3 AND 4, BLOCK 134, DISTRICT LOT 343, CARIBOO DISTRICT, PLAN 1268.

PLAN EPP71279

PURSUANT TO SECTION 99(1)(e) OF LAND TITLE ACT
FOR EASEMENT PURPOSES.

INTEGRATED SURVEY AREA No. 39 PRINCE GEORGE, BC, 4.0.0.BC.1

BCGS 93G.097



THE INTENDED PLOT SIZE OF THIS PLAN IS 560 mm IN WIDTH BY 432 mm
IN HEIGHT (C SIZE) WHEN PLOTTED AT A SCALE OF 1:150.

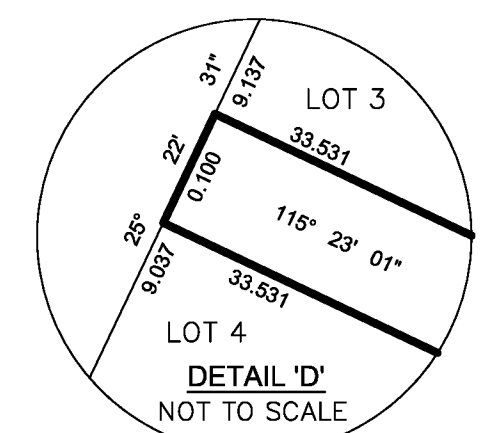
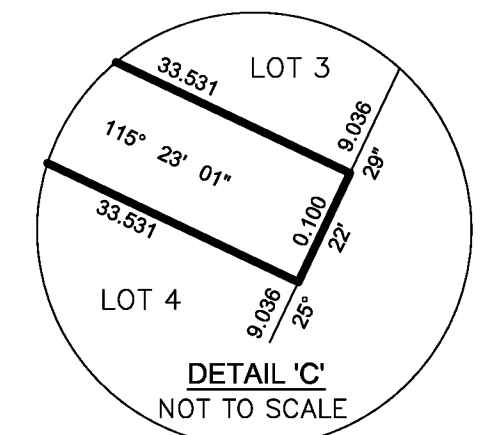
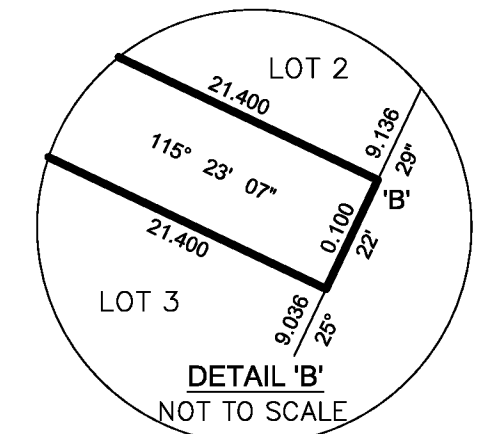
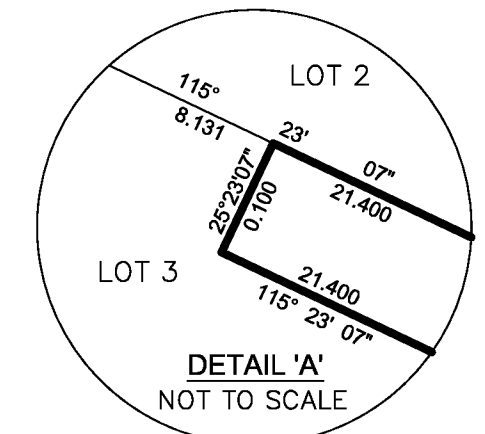
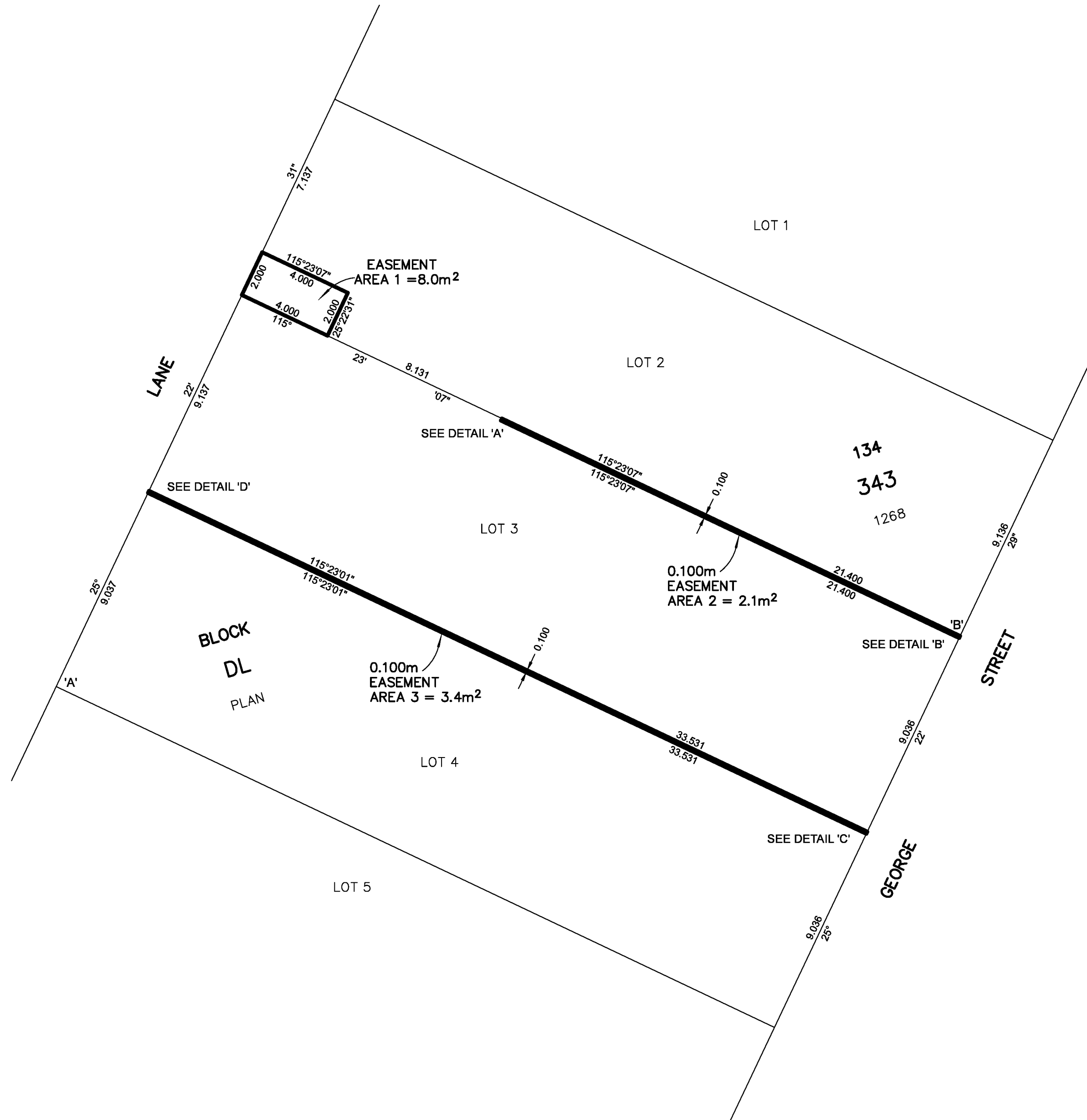
ALL DISTANCES ARE IN METRES AND DECIMALS THEREOF.

GRID BEARINGS ARE DERIVED FROM PLAN EPP68075.

THE UTM COORDINATES AND ESTIMATED HORIZONTAL POSITIONAL
ACCURACY ACHIEVED HAVE BEEN DERIVED FROM PLAN EPP68075.

THIS PLAN SHOWS HORIZONTAL GROUND-LEVEL DISTANCES UNLESS
OTHERWISE SPECIFIED. TO COMPUTE GRID DISTANCES, MULTIPLY
GROUND-LEVEL DISTANCES BY THE AVERAGE COMBINED FACTOR OF
0.9995163 WHICH HAS BEEN DERIVED FROM PLAN EPP68075.

GEOREFERENCING POSITIONS UTM COORDINATES, ZONE 10, NAD 83 (CSRS), 4.0.0.BC.1				
STATION	NORTHING	EASTING	EHPA	CSF
'A'	5974190.90	516835.50	0.10m	0.9995160
'B'	5974193.04	516873.61	0.10m	0.9995160



BOOK OF REFERENCE		
DESCRIPTION	PID	AREA (m ²)
LOT 2, BLOCK 134, DL 343, PLAN 1268	013-075-802	AREA 1 = 8.0 m ²
LOT 3, BLOCK 134, DL 343, PLAN 1268	012-996-319	AREA 2 = 2.1 m ²
LOT 4, BLOCK 134, DL 343, PLAN 1268	012-996-335	AREA 3 = 3.4 m ²

THIS PLAN IS BASED ON THE FOLLOWING LAND TITLE
AND SURVEY AUTHORITY OF BC RECORDS:
PLAN EPP68075

THE ASSOCIATION OF BC LAND SURVEYORS HAS GRANTED RELIEF FROM
COMPLIANCE WITH GSI RULE 5-4(2) FOR THIS SURVEY SINCE THE STANDARD
DEVIATIONS OF THE ISA MONUMENTS DO NOT MEET THE REQUIREMENTS OF
SAID RULE.

SHAUNA C. GOERTZEN, BCLS 798
29th DAY OF MARCH, 2017

THIS PLAN LIES WITHIN THE REGIONAL DISTRICT OF FRASER-FORT GEORGE.

McElhanney
McELHANNEY ASSOCIATES
LAND SURVEYING LTD.
Suite 12
556 North Nechako Road
Prince George BC
Canada V2K 1A1
Tel 250 561 2229
File No. 2341-6499-E