

# REFERENCE PLAN

OF ROAD THROUGH PART OF LOT 11 DISTRICT LOT 1599 CARIBOO DISTRICT PLAN 10790 EXCEPT PLANS 22760 30505 AND 34961

Pursuant to Section 107 of the Land Title Act.

BCGS 93G.086



The intended plot size of this plan is 864mm in width by 560mm in height (D size) when plotted at a scale of 1:1000.

Distances are horizontal ground level distances and decimals thereof unless otherwise denoted.

## LEGEND

Bearings are NAD83 (CSRS) Grid and are derived from Global Navigation Satellite System Observations to Geodetic Control Monument No.532093 and Geodetic Control Monument No.782326 and are referred to the Central Meridian of UTM Zone 10.

The UTM Coordinates and Estimated Network horizontal accuracy are derived from Global Navigation Satellite System Observations to Geodetic Control Monument No.532093 and Geodetic Control Monument No.782326.

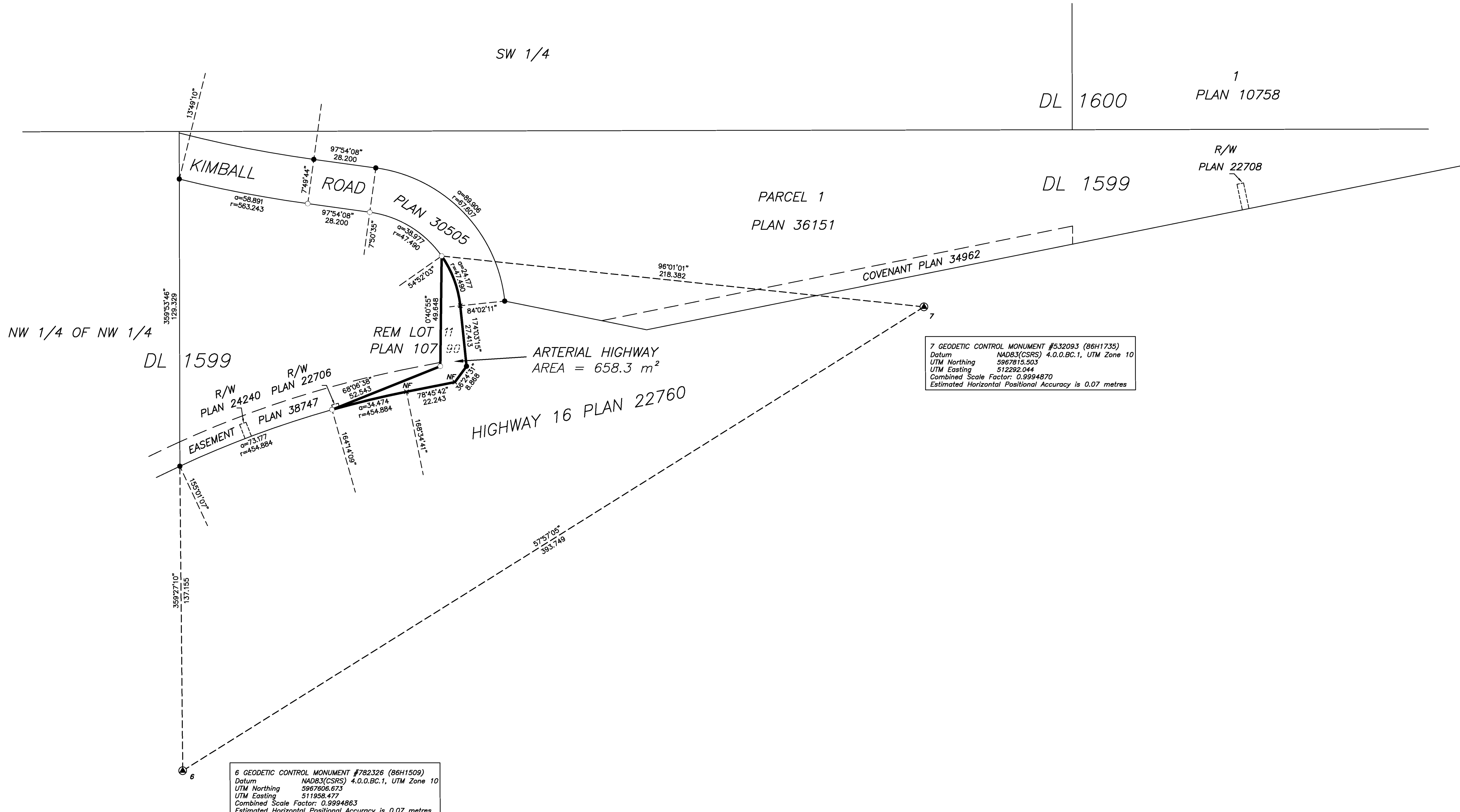
This plan shows horizontal ground-level distances. To compute grid distances, multiply ground level distances by the average combined factor of 0.9994870. The average combined factor has been determined based on an ellipsoidal elevation of 733.64 metres.

Integrated Survey Area 39, Prince George.

NOTE: This plan extinguishes Part of the Easement as depicted on Plan 38747, the Right of Way as depicted on Plan 24240, and Part of the Right of Way depicted on Plan 22706.

## LEGEND

- ▲ denotes control monument found
- denotes standard iron post found
- denotes standard iron post placed
- × denotes unmarked measured point



7 GEODETIC CONTROL MONUMENT #532093 (86H1735)  
 Datum NAD83(CSRS) 4.0.0.BC.1, UTM Zone 10  
 UTM Northing 5967815.503  
 UTM Easting 512292.044  
 Combined Scale Factor: 0.9994870  
 Estimated Horizontal Positional Accuracy is 0.07 metres

6 GEODETIC CONTROL MONUMENT #782326 (86H1509)  
 Datum NAD83(CSRS) 4.0.0.BC.1, UTM Zone 10  
 UTM Northing 5967606.673  
 UTM Easting 511958.477  
 Combined Scale Factor: 0.9994863  
 Estimated Horizontal Positional Accuracy is 0.07 metres

This plan dedicates arterial highway as authorized by the Minister of Transportation and Infrastructure.  
 This plan lies within the Regional District of Fraser-Fort George  
 The field survey represented by this plan was completed on the 27th day of March, 2017.  
 Manjit Sangha, B.C.L.S. (939)  
 MOTI FILE: PS736516