

**EXPLANATORY PLAN OF EASEMENT OVER
PART OF THE SOUTH WEST 1/4 OF
DISTRICT LOT 4028, CARIBOO DISTRICT,
EXCEPT PLANS H226, 26531, PGP37520,
PGP40312, PGP41662, 29887, AND EPP42339.**

PLAN EPP70889

PURSUANT TO SECTION 99(1)(e) OF THE LAND TITLE ACT.

BCGS 93G.097

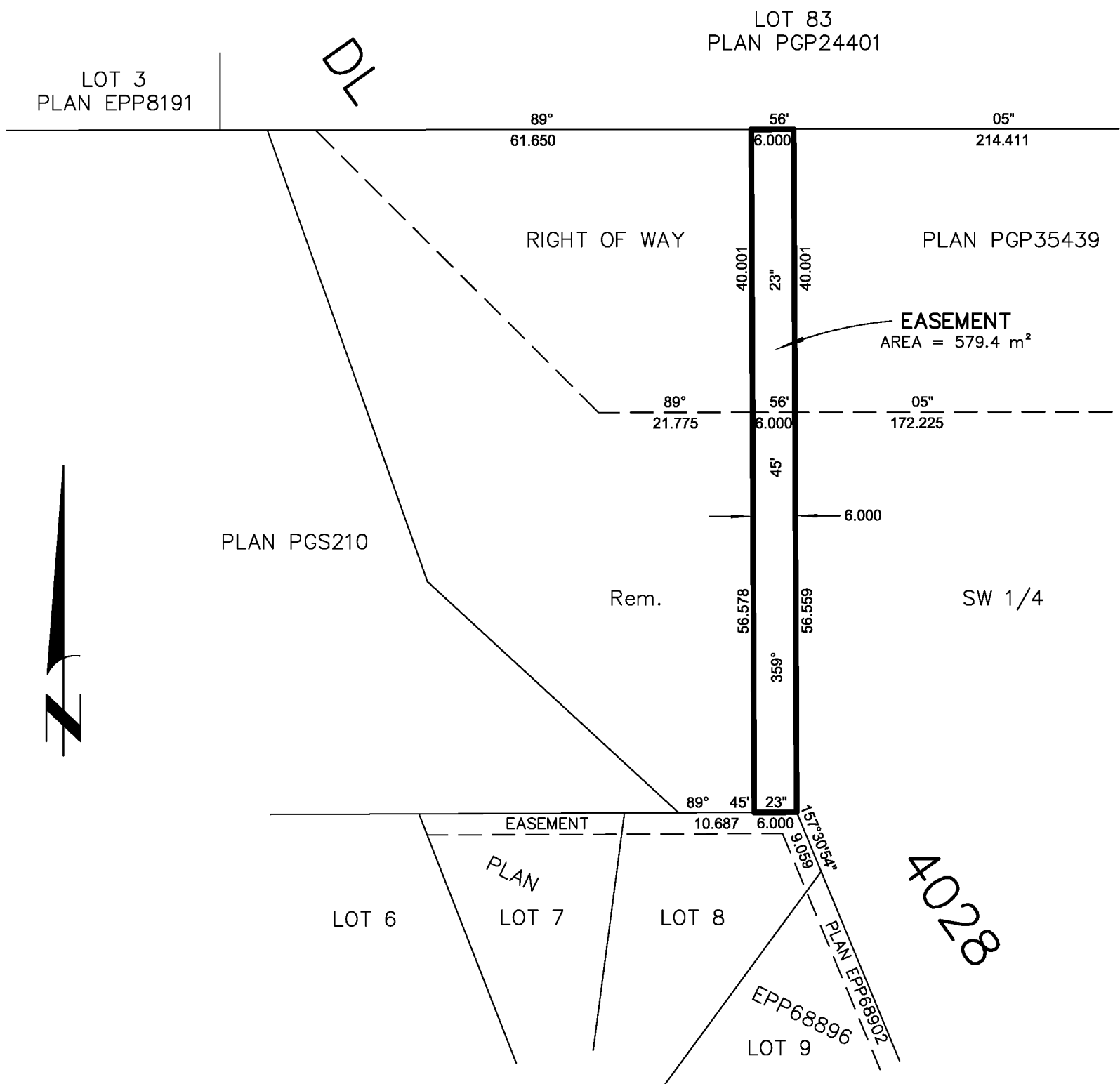
INTEGRATED SURVEY AREA No. 39 PRINCE GEORGE, BC, NAD83 (CSRS) 4.0.0.BC.1



THE INTENDED PLOT SIZE OF THIS PLAN IS 280mm IN WIDTH BY 432mm IN HEIGHT (B SIZE) WHEN PLOTTED AT A SCALE OF 1:750.

GRID BEARINGS ARE DERIVED FROM PREVIOUSLY INTEGRATED PLAN EPP68896.

THIS PLAN SHOWS HORIZONTAL GROUND-LEVEL DISTANCES, UNLESS OTHERWISE SPECIFIED.



THIS PLAN IS BASED ON THE FOLLOWING LAND TITLE AND SURVEY AUTHORITY OF BC RECORDS:
PLAN EPP68896
PLAN EPP8191
PLAN PGS210
PLAN PGP35439
PLAN PGP24401

ALBERT KOEHLER, BCLS 974
15TH DAY OF MARCH, 2017

THIS PLAN LIES WITHIN THE REGIONAL DISTRICT OF FRASER-FORT GEORGE.

McElhanney
McELHANNEY ASSOCIATES
LAND SURVEYING LTD.
Suite 12
556 North Nechako Road
Prince George BC
Canada V2K 1A1
Tel 250 561 2229

File No. 2341-6509-E2
CPG File No.: SD100461