

EXPLANATORY PLAN OF STATUTORY RIGHT OF WAY OVER PART OF THE SOUTH WEST 1/4 OF DISTRICT LOT 4028, CARIBOO DISTRICT, EXCEPT PLANS H226, 26531, PGP37520, PGP40312, PGP41662, 29887, AND EPP42339.

PLAN EPP70061

PURSUANT TO SECTION 99(1)(e) OF THE LAND TITLE ACT.

INTEGRATED SURVEY AREA No. 39 PRINCE GEORGE, BC, NAD83 (CSRS) 4.0.0.BC.1

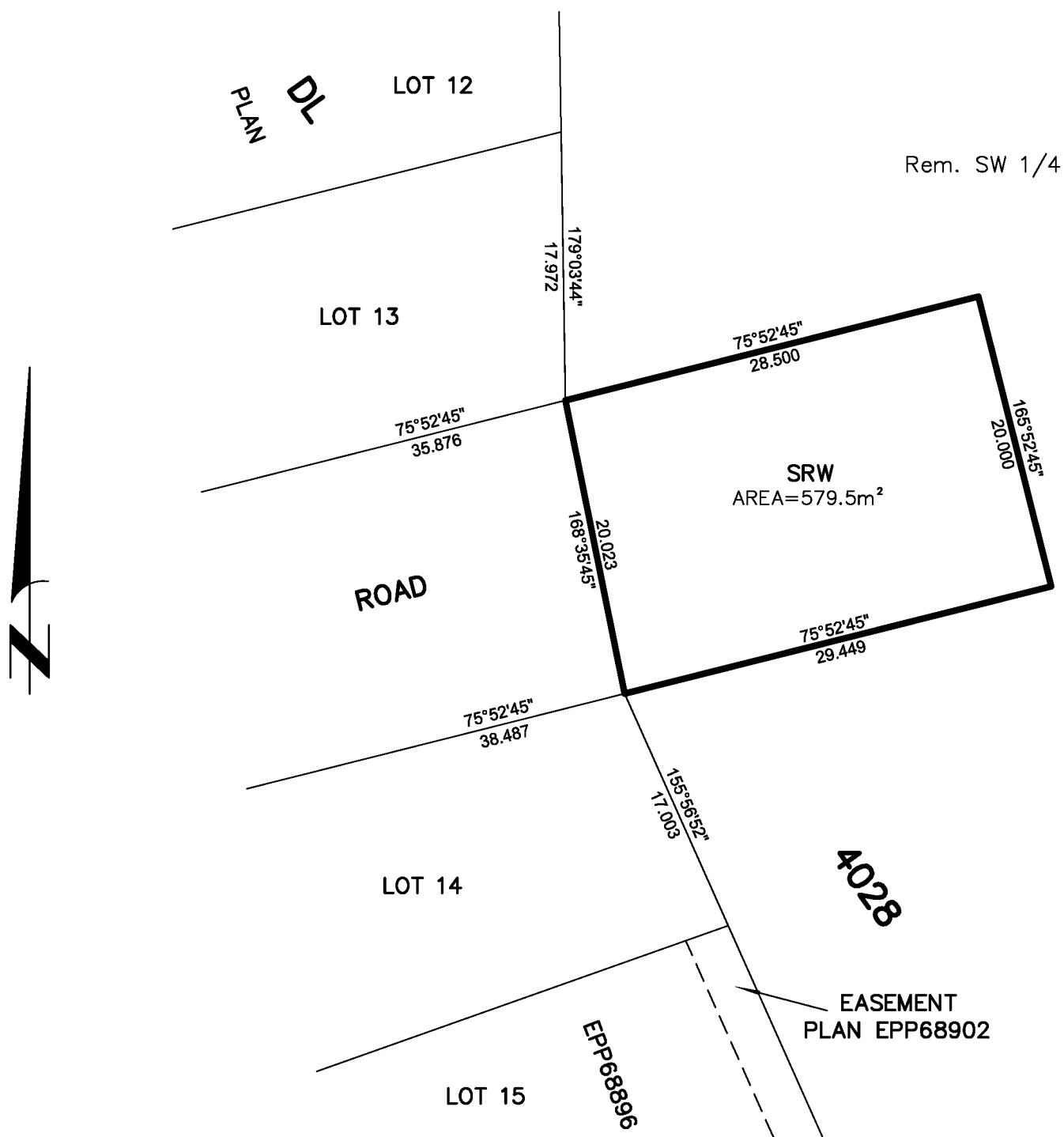
BCGS 93G.097



THE INTENDED PLOT SIZE OF THIS PLAN IS 280mm IN WIDTH BY 432mm IN HEIGHT (B SIZE) WHEN PLOTTED AT A SCALE OF 1:400.

THIS PLAN SHOWS HORIZONTAL GROUND LEVEL DISTANCES UNLESS OTHERWISE SPECIFIED. ALL DISTANCES ARE IN METRES AND DECIMALS THEREOF.

GRID BEARINGS ARE DERIVED FROM PREVIOUSLY INTEGRATED PLAN EPP68896.



THIS PLAN IS BASED ON THE FOLLOWING LAND TITLE AND SURVEY AUTHORITY OF BC RECORDS: PLAN EPP68896.

ALBERT KOEHLER, BCLS 974
16th DAY OF FEBRUARY, 2017

THIS PLAN LIES WITHIN THE REGIONAL DISTRICT OF FRASER-FORT GEORGE.

McElhanney
 McELHANNEY ASSOCIATES
 LAND SURVEYING LTD.
 Suite 12
 556 North Nechako Road
 Prince George BC
 Canada V2K 1A1
 Tel 250 561 2229

File No. 2341-6509-RW-R1