

EXPLANATORY PLAN OF EASEMENT OVER PART OF LOT A, DISTRICT LOT 2433, CARIBOO DISTRICT, PLAN EPP56373

PLAN EPP69238

PURSUANT TO SECTION 99(1)(e) OF THE LAND TITLE ACT.

INTEGRATED SURVEY AREA No. 39 PRINCE GEORGE, BC, NAD83 (CSRS) 4.0.0.BC.1

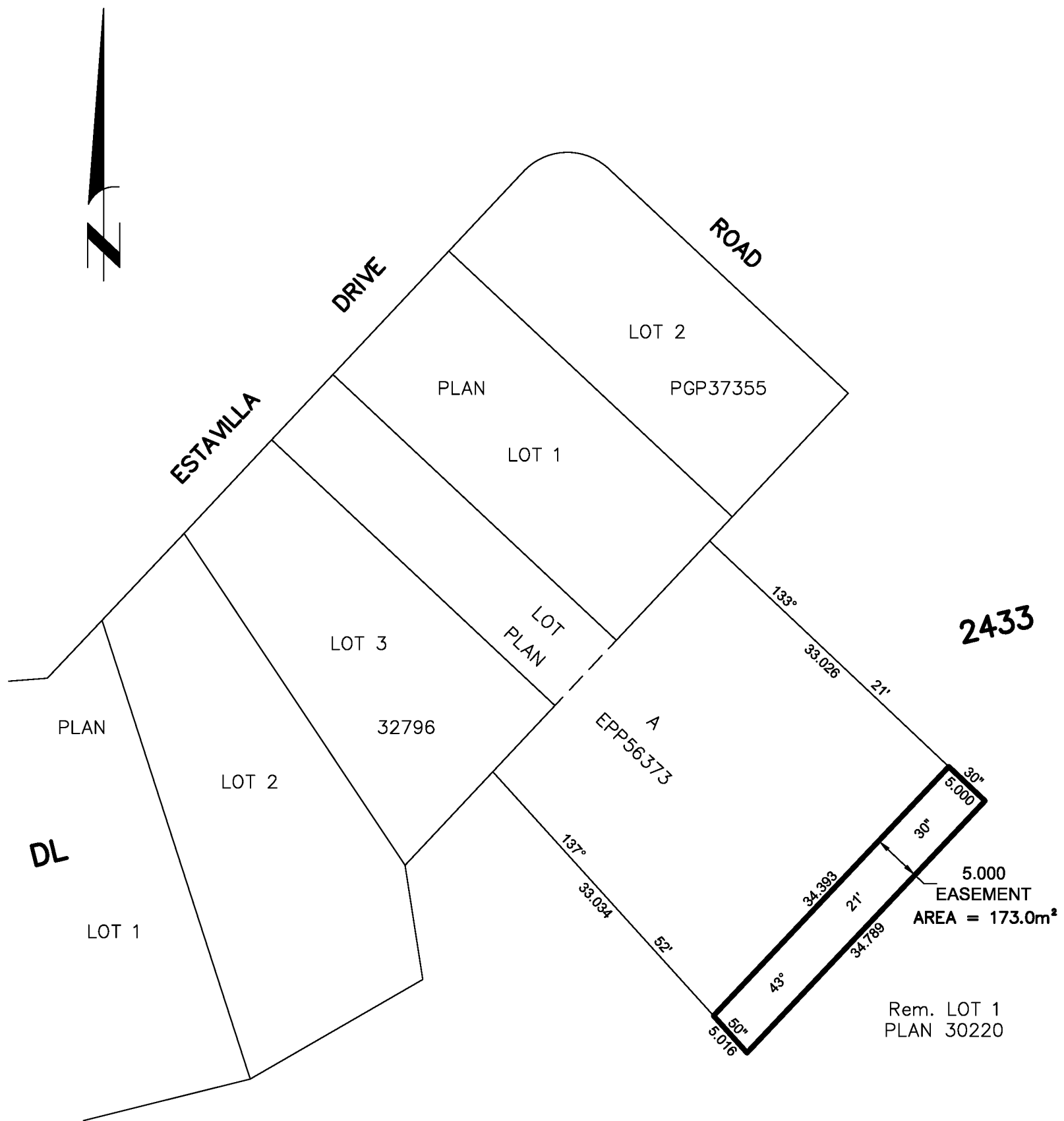
BCGS 93J.007



THE INTENDED PLOT SIZE OF THIS PLAN IS 280mm IN WIDTH BY 432mm IN HEIGHT (B SIZE) WHEN PLOTTED AT A SCALE OF 1:500.

THIS PLAN SHOWS HORIZONTAL GROUND LEVEL DISTANCES UNLESS OTHERWISE SPECIFIED. ALL DISTANCES ARE IN METRES AND DECIMALS THEREOF.

GRID BEARINGS ARE DERIVED FROM PREVIOUSLY INTEGRATED PLAN EPP56373.



THIS PLAN IS BASED ON THE FOLLOWING
LAND TITLE AND SURVEY AUTHORITY OF BC RECORDS:
PLAN EPP56373

ALBERT KOEHLER, BCLS 974
10TH DAY OF JANUARY, 2017

THIS PLAN LIES WITHIN THE REGIONAL DISTRICT OF FRASER-FORT GEORGE.

McElhanney
McELHANNEY ASSOCIATES
LAND SURVEYING LTD.
Suite 12
556 North Nechako Road
Prince George BC
Canada V2K 1A1
Tel 250 561 2229

File No. 2341-6534-E