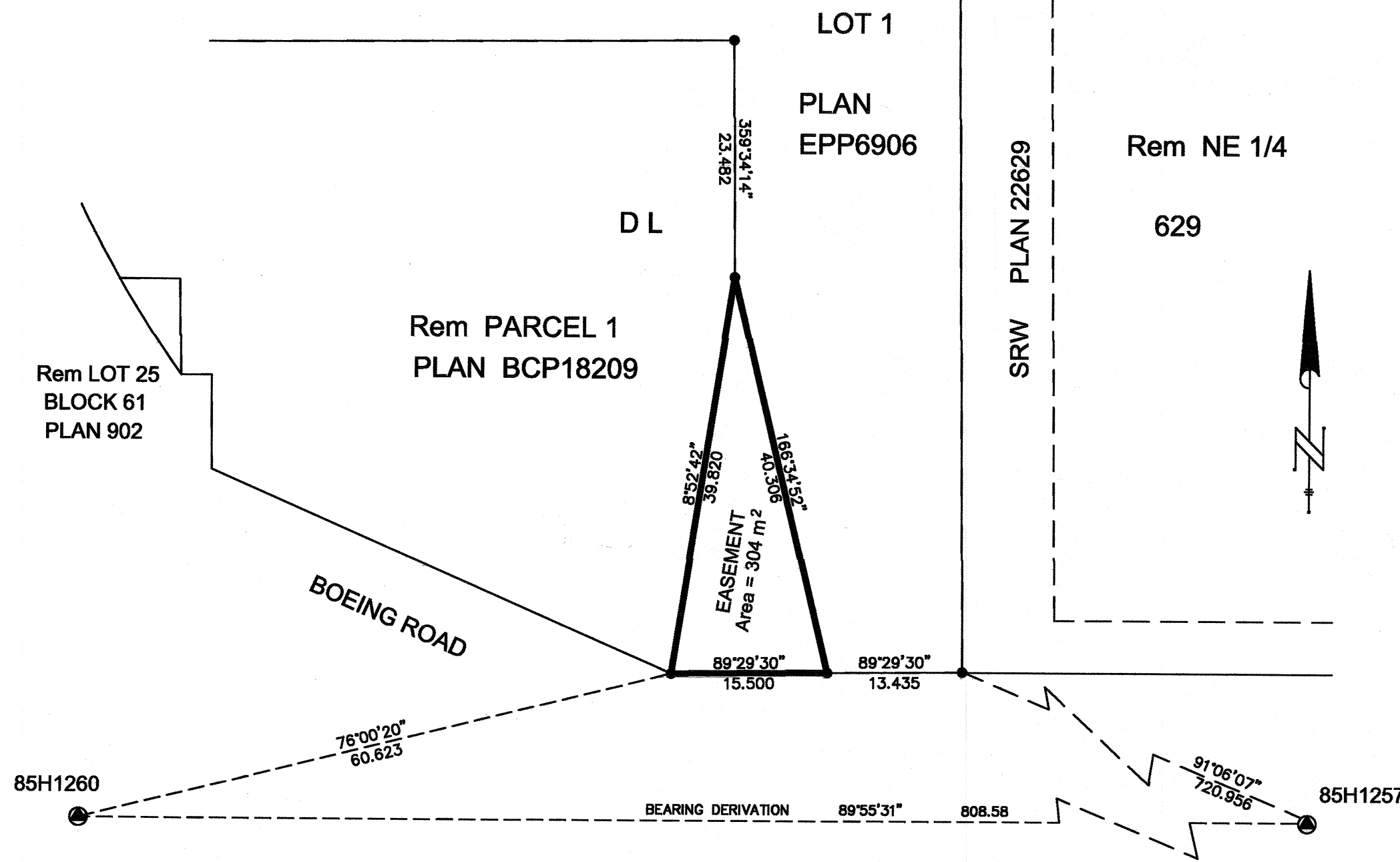


PLAN EPP6907



REFERENCE PLAN OF EASEMENT OVER PART OF LOT 1, DL 629, CARIBOO DISTRICT, PLAN EPP6906

BCGS 93G.097

Pursuant to Section 99 (1)(e) of the Land Title Act



All distances are in metres

The intended plot size of this plan is 432mm in width by 280 mm in height when plotted at scale 1:500 (use B size sheet)

LEGEND

Grid bearings are derived from observations between control monuments 85H1260 and 85H1257 Integrated Survey Area Number 39, City of Prince George, NAD 83(CSRS)

This plan shows ground-level measured distances Prior to computation of UTM coordinates multiply by combined factor of 0.9995003

- Standard Iron Post Found
- ⊙ Control Monument

This plan lies within the Regional District of Fraser - Fort George

The field survey represented by this plan was completed by Richard E. Gook, BCLS on the 12th day of April, 2010

R.E. GOOK & ASSOCIATES  
B.C. & CANADA LAND SURVEYORS

886 VANCOUVER STREET  
PRINCE GEORGE, BC, V2L 2P5  
PHONE: 250-564-4242  
FAX: 250-564-5343  
FILE:10-0605PG  
regook@northernsurveys.com