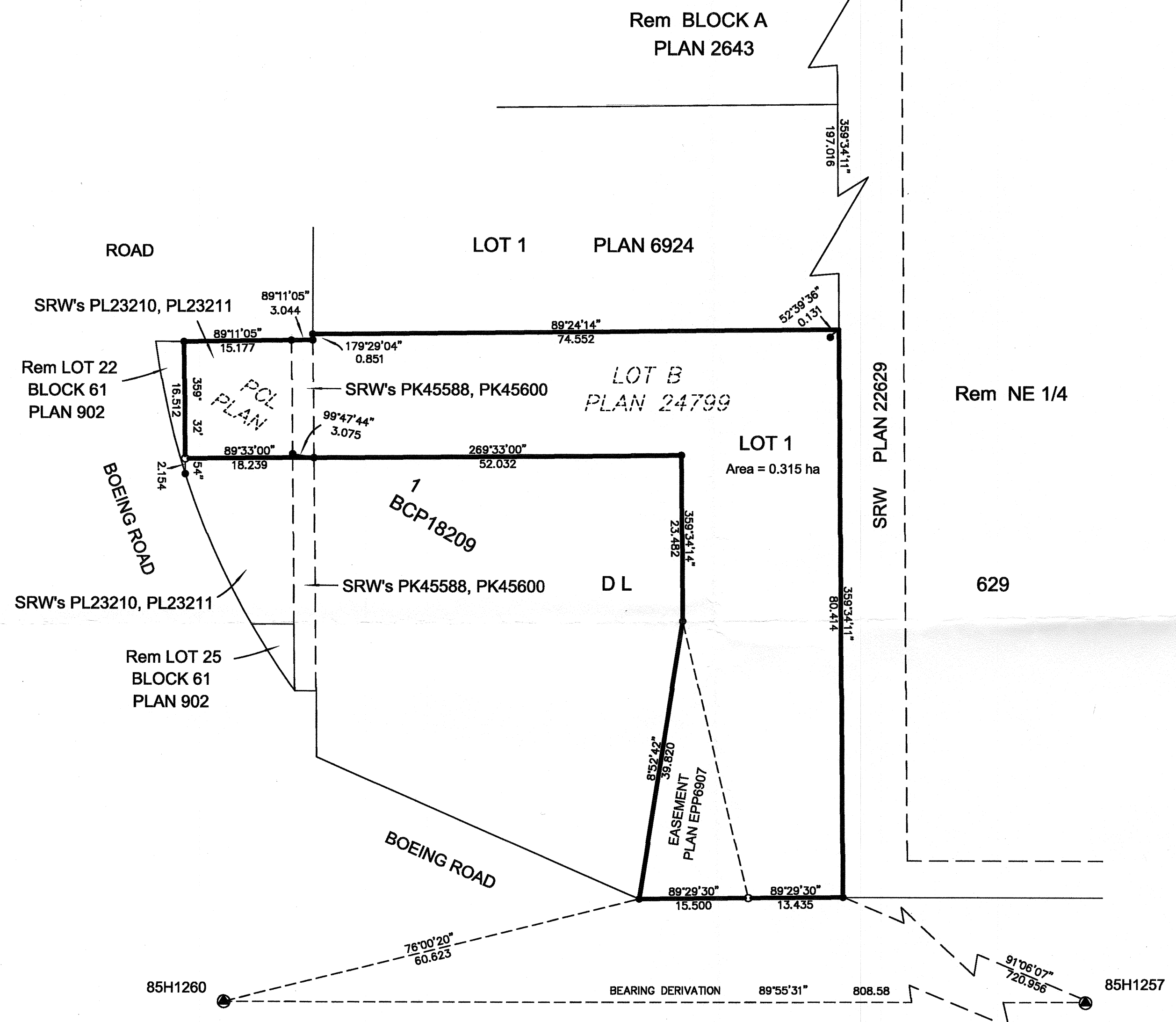
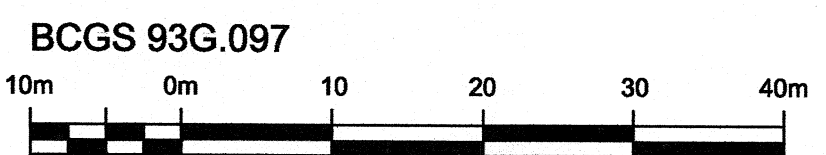


PLAN EPP6906



SUBDIVISION PLAN OF LOT B, PLAN 24799 AND PART OF PARCEL 1, PLAN BCP18209, DL 629, CARIBOO DISTRICT



All distances are in metres

The intended plot size of this plan is 560mm in width by 432 mm in height when plotted at scale 1:500 (use C size sheet)

LEGEND

Grid bearings are derived from observations between control monuments 85H1260 and 85H1257 Integrated Survey Area Number 39, City of Prince George, NAD 83(CSRS)

This plan shows ground-level measured distances Prior to computation of UTM coordinates multiply by combined factor of 0.9995003

- Standard Iron Post Placed
- Standard Iron Post Found
- ⊙ Control Monument

This plan lies within the Regional District of Fraser - Fort George

The field survey represented by this plan was completed by Richard E. Gook, BCLS on the 12th day of April, 2010

R.E. GOOK & ASSOCIATES
 B.C. & CANADA LAND SURVEYORS
 886 VANCOUVER STREET
 PRINCE GEORGE, BC, V2L 2P5
 PHONE: 250-564-4242
 FAX: 250-564-5343
 FILE:10-0605PG
 regook@northernsurveys.com

This plan lies within the jurisdiction of the Approving Officer for the City of Prince George File No. SD100329