

# SUBDIVISION PLAN OF PART OF LOT 8, DISTRICT LOT 632, CARIBOO DISTRICT, PLAN 1243.

PLAN EPP68929

PURSUANT TO SECTION 67 OF THE LAND TITLE ACT

THIS PLAN LIES WITHIN INTEGRATED SURVEY AREA No. 39 PRINCE GEORGE, BC, NAD83 (CSRS) 4.0.0.BC.1

BCGS 93G.097



THE INTENDED PLOT SIZE OF THIS PLAN IS 432mm IN WIDTH BY 560mm IN HEIGHT (C SIZE) WHEN PLOTTED AT A SCALE OF 1:1000.

ALL DISTANCES ARE IN METRES AND DECIMALS THEREOF.

GRID BEARINGS ARE DERIVED FROM OBSERVATIONS BETWEEN GEODETIC CONTROL MONUMENTS 85H1280 AND 85H12550 AND REFERRED TO THE CENTRAL MERIDIAN OF UTM ZONE 10.

THE UTM COORDINATES AND ESTIMATED ABSOLUTE ACCURACY ACHIEVED HAVE BEEN DERIVED FROM OBSERVATIONS TO GEODETIC CONTROL MONUMENT 85H1280.

THIS PLAN SHOWS HORIZONTAL GROUND-LEVEL DISTANCES UNLESS OTHERWISE SPECIFIED. TO COMPUTE GRID DISTANCES, MULTIPLY GROUND-LEVEL DISTANCES BY THE AVERAGE COMBINED FACTOR OF 0.9995039 WHICH HAS BEEN DERIVED FROM GEODETIC CONTROL MONUMENTS 85H1280 AND 85H12550

NOTE:  
THIS PLAN SHOWS ONE OR MORE WITNESS POSTS WHICH ARE NOT SET ON THE TRUE CORNER(S).

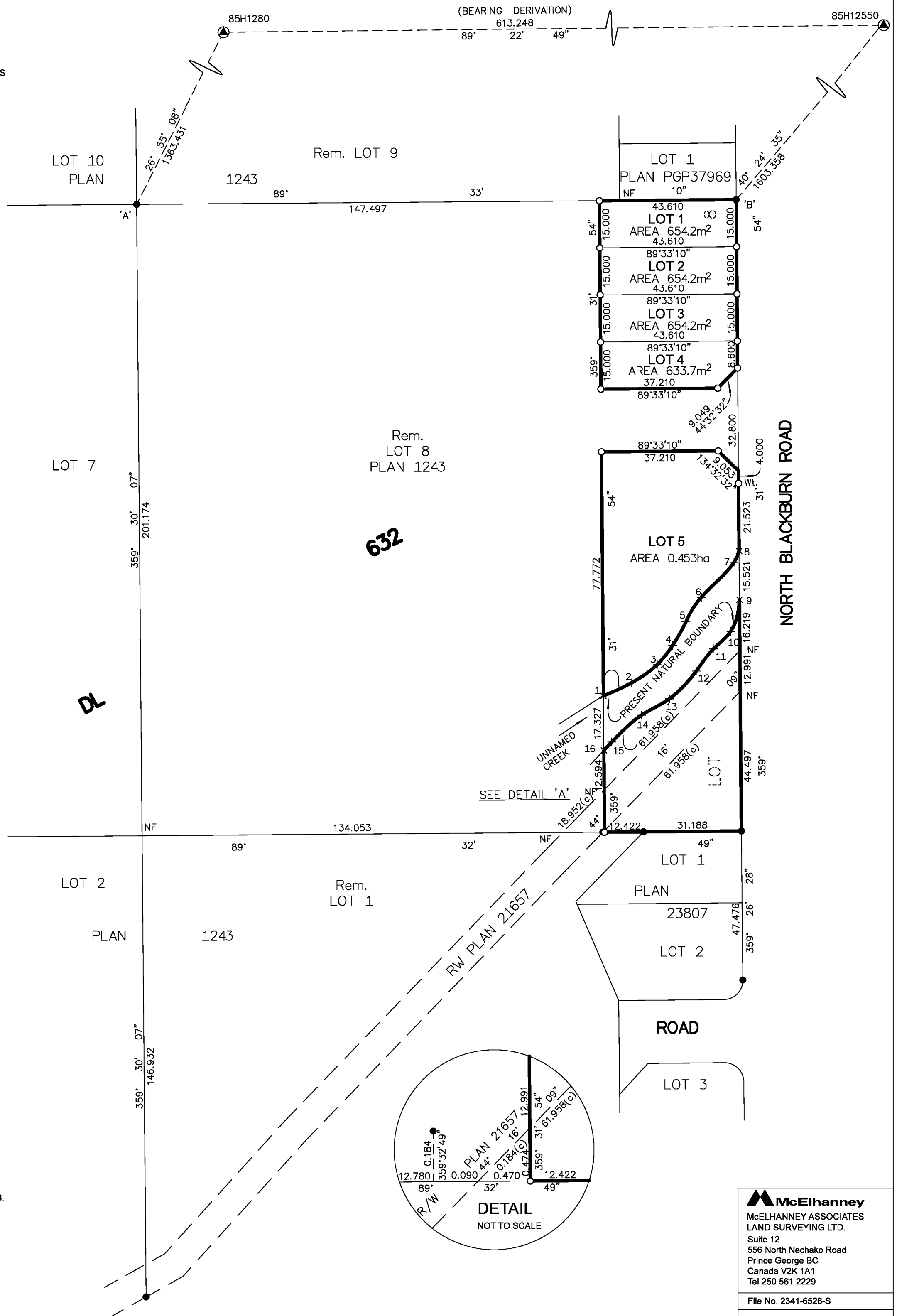
## LEGEND

SYMBOLS	DESCRIPTION
FOUND	
PLACED	
	CONTROL MONUMENT
	STANDARD IRON POST
CSF	COMBINED SCALE FACTOR
EHPA	ESTIMATED HORIZONTAL POSITIONAL ACCURACY

GEOREFERENCING POSITIONS UTM COORDINATES, ZONE 10, NAD 83 (CSRS), 4.0.0.BC.1				
STATION	NORTHING	EASTING	EHPA	CSF
Fd.IP'A'	5973478.11	523377.19	0.10m	0.9995037
Fd.IP'B'	5973479.60	523568.19	0.10m	0.9995037



PRESENT NATURAL BOUNDARY OF UNNAMED CREEK		
STATION	NORTHING	EASTING
1	5973321.57	523525.90
2	5973325.78	523534.94
3	5973331.49	523542.98
4	5973337.66	523547.92
5	5973345.18	523552.17
6	5973352.97	523557.03
7	5973364.17	523567.51
8	5973367.73	523569.11
9	5973352.22	523569.24
10	5973342.15	523566.45
11	5973336.58	523560.92
12	5973329.51	523555.49
13	5973320.64	523546.88
14	5973315.47	523538.04
15	5973306.86	523528.50
16	5973304.25	523526.04



INSPECTED UNDER THE LAND TITLE ACT ON THE 27th DAY OF NOVEMBER, 2018.

THIS PLAN LIES WITHIN THE JURISDICTION OF THE APPROVING OFFICER FOR THE CITY OF PRINCE GEORGE.

THE FIELD SURVEY REPRESENTED BY THIS PLAN WAS COMPLETED ON THE 16th DAY OF DECEMBER, 2016  
SHAUNA C. GOERTZEN, BCLS 798

THIS PLAN LIES WITHIN THE REGIONAL DISTRICT OF FRASER-FORT GEORGE

**McElhanney**  
McELHANNEY ASSOCIATES  
LAND SURVEYING LTD.  
Suite 12  
556 North Nechako Road  
Prince George BC  
Canada V2K 1A1  
Tel 250 561 2229  
File No. 2341-6528-S