

# STATUTORY RIGHT OF WAY PLAN OVER PART OF LOT 1, PLAN 17334 AND PART OF STRATA LOT 1, PLAN EPS4104, BOTH IN DISTRICT LOT 2003, CARIBOO DISTRICT.

PLAN EPP68904

PURSUANT TO SECTION 113 OF THE LAND TITLE ACT.

THIS PLAN LIES WITHIN INTEGRATED SURVEY AREA  
No. 39 PRINCE GEORGE, BC, NAD83 (CSRS) 4.0.0.BC.1

BCGS 93G.087



THE INTENDED PLOT SIZE OF THIS PLAN IS 560mm IN WIDTH BY 432mm IN HEIGHT (C SIZE) WHEN PLOTTED AT A SCALE OF 1:750.

ALL DISTANCES ARE IN METRES AND DECIMALS THEREOF.

GRID BEARINGS ARE DERIVED FROM GNSS OBSERVATIONS BETWEEN GEODETIC CONTROL MONUMENTS 86H1670 AND 86H1722.

THE UTM COORDINATES AND ESTIMATED ABSOLUTE ACCURACY ACHIEVED HAVE BEEN DERIVED FROM MASCOT PUBLISHED COORDINATES AND STANDARD DEVIATIONS FOR GEODETIC CONTROL MONUMENTS 86H1670 AND 86H1722.

THIS PLAN SHOWS HORIZONTAL GROUND-LEVEL DISTANCES UNLESS OTHERWISE SPECIFIED. TO COMPUTE GRID DISTANCES, MULTIPLY GROUND-LEVEL DISTANCES BY THE AVERAGE COMBINED FACTOR OF 0.9994932 WHICH HAS BEEN DERIVED FROM GEODETIC CONTROL MONUMENT 86H1670.

NOTE:  
THIS PLAN SHOWS ONE OR MORE WITNESS POSTS WHICH ARE NOT SET ON THE TRUE CORNER(S).  
SOME POSTS AND LINES ARE EXAGGERATED FOR CLARITY.

## LEGEND

SYMBOLS		DESCRIPTION
FOUND	PLACED	
		CONTROL MONUMENT
		STANDARD IRON POST
		COMMON PROPERTY
CSF		COMBINED SCALE FACTOR
EAA		ESTIMATED ABSOLUTE ACCURACY

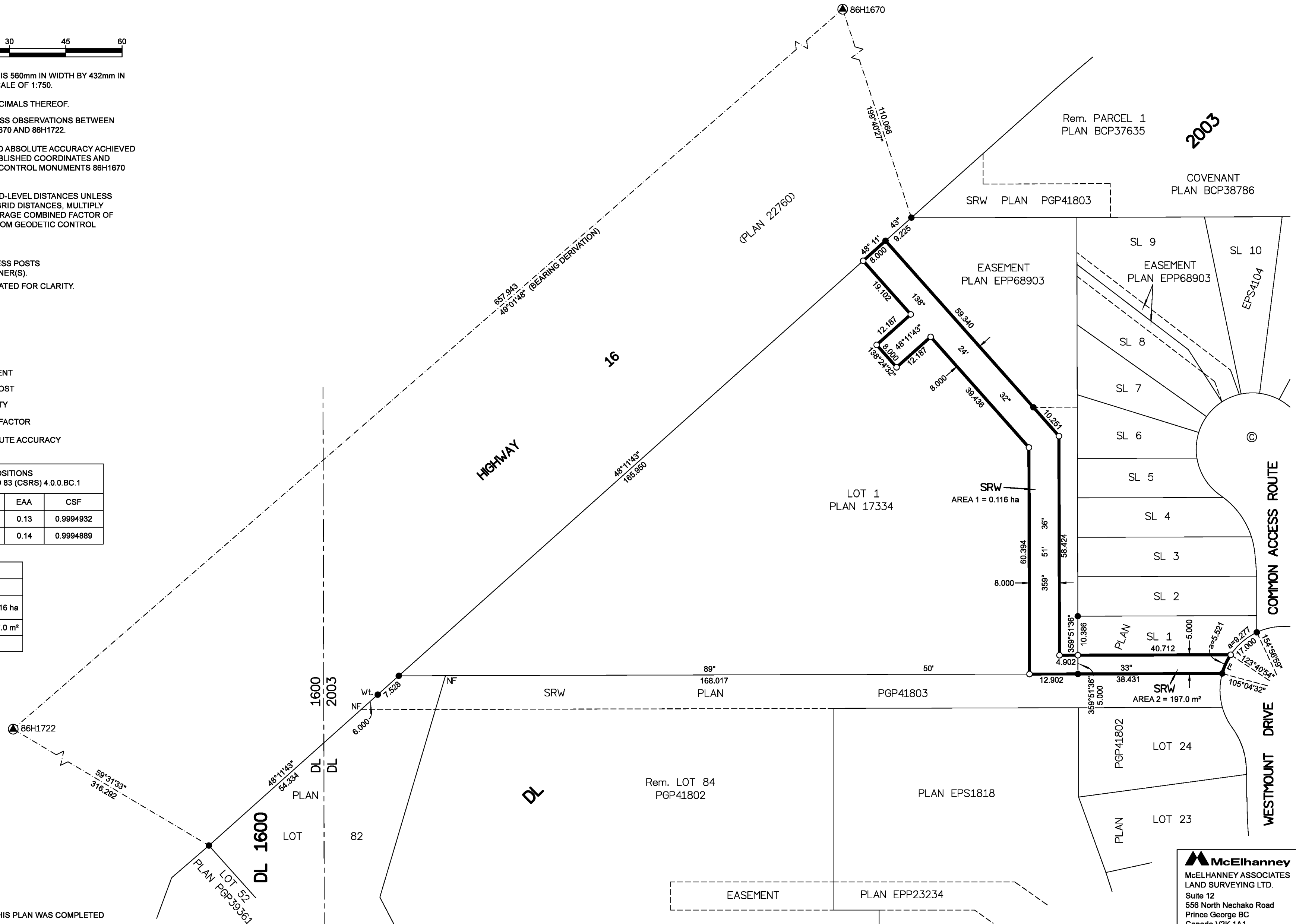
GEOREFERENCING POSITIONS UTM COORDINATES, ZONE 10, NAD 83 (CSRS) 4.0.0.BC.1				
STATION	NORTHING	EASTING	EAA	CSF
86H1670	5968403.30	513361.59	0.13	0.9994932
86H1722	5967972.13	512865.06	0.14	0.9994889

BOOK OF REFERENCE	
DESCRIPTION	AREA
LOT 1, PLAN 17334 011-491-663	AREA 1 = 0.116 ha
SL 1, PLAN EPS4104	AREA 2 = 197.0 m <sup>2</sup>
<b>TOTAL AREA</b>	<b>0.136 ha</b>



THE FIELD SURVEY REPRESENTED BY THIS PLAN WAS COMPLETED  
ON THE 16th DAY OF JULY, 2019  
SHAUNA C. GOERTZEN, BCLS 798

THIS PLAN LIES WITHIN THE REGIONAL DISTRICT OF FRASER-FORT GEORGE.



**McElhanney**  
McELHANNEY ASSOCIATES  
LAND SURVEYING LTD.  
Suite 12  
556 North Nechako Road  
Prince George BC  
Canada V2K 1A1  
Tel 250 561 2229  
File No. 2341-6521-SRW