

REFERENCE PLAN OF EASEMENT OVER PART OF LOT 1, PLAN 17334, AND PART OF STRATA LOTS 8 AND 9, PLAN EPS4104, ALL IN DISTRICT LOT 2003, CARIBOO DISTRICT.

PLAN EPP68903

PURSUANT TO SECTION 99(1)(e) OF THE LAND TITLE ACT.
FOR EASEMENT PURPOSES

THIS PLAN LIES WITHIN INTEGRATED SURVEY AREA
No. 39 PRINCE GEORGE, BC, NAD83 (CSRS) 4.0.0.BC.1

BCGS 93G.087



THE INTENDED PLOT SIZE OF THIS PLAN IS 560mm IN WIDTH BY 432mm IN HEIGHT (C SIZE) WHEN PLOTTED AT A SCALE OF 1:750.

ALL DISTANCES ARE IN METRES AND DECIMALS THEREOF.

GRID BEARINGS ARE DERIVED FROM GNSS OBSERVATIONS BETWEEN
GEODETIC CONTROL MONUMENTS 86H1670 AND 86H1722.

THE UTM COORDINATES AND ESTIMATED ABSOLUTE ACCURACY ACHIEVED
HAVE BEEN DERIVED FROM MASCOT PUBLISHED COORDINATES AND
STANDARD DEVIATIONS FOR GEODETIC CONTROL MONUMENTS 86H1670
AND 86H1722.

THIS PLAN SHOWS HORIZONTAL GROUND-LEVEL DISTANCES UNLESS
OTHERWISE SPECIFIED. TO COMPUTE GRID DISTANCES, MULTIPLY
GROUND-LEVEL DISTANCES BY THE AVERAGE COMBINED FACTOR OF
0.9994932 WHICH HAS BEEN DERIVED FROM GEODETIC CONTROL
MONUMENT 86H1670.

NOTE:
THIS PLAN SHOWS ONE OR MORE WITNESS POSTS
WHICH ARE NOT SET ON THE TRUE CORNER(S).

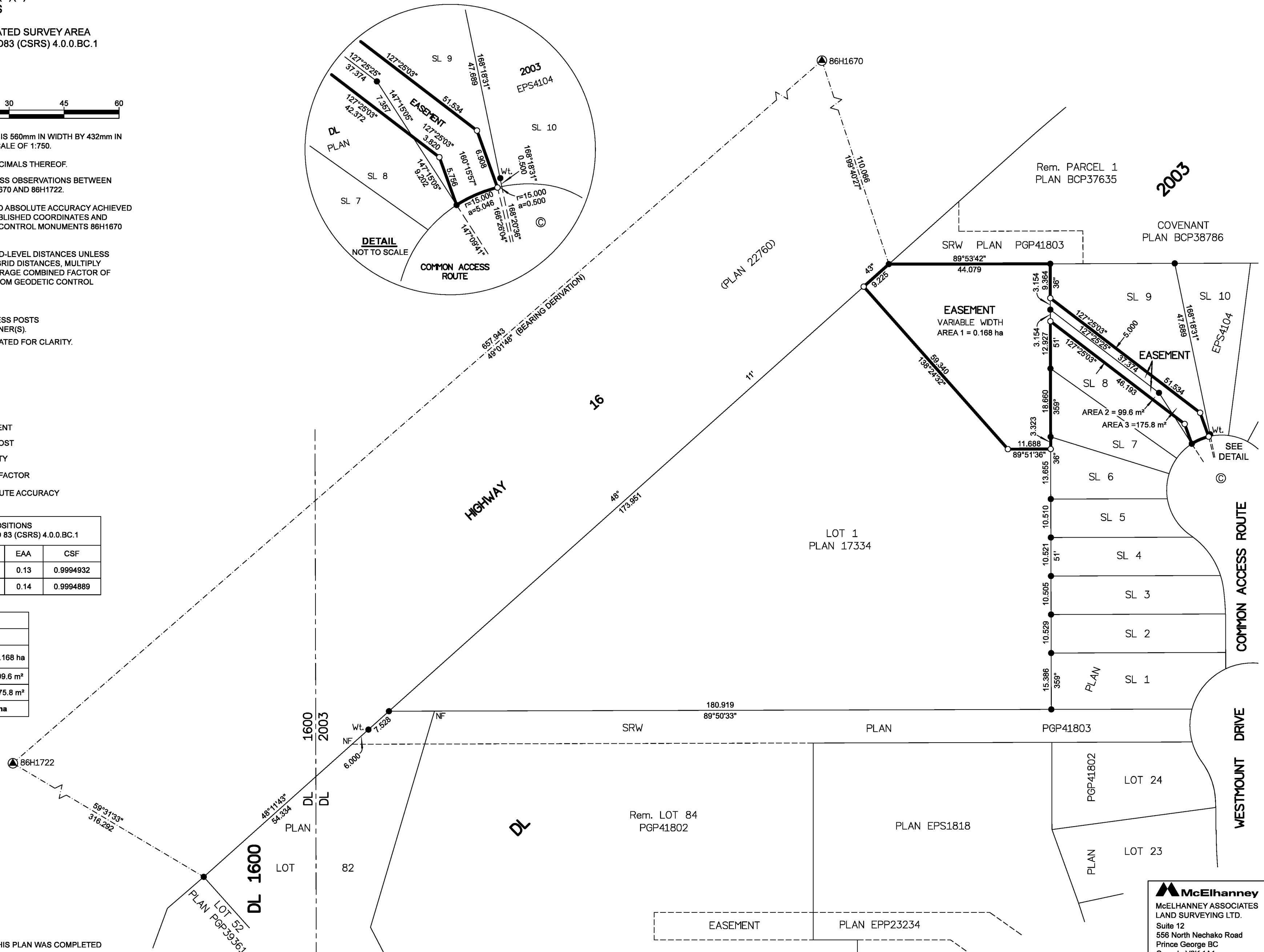
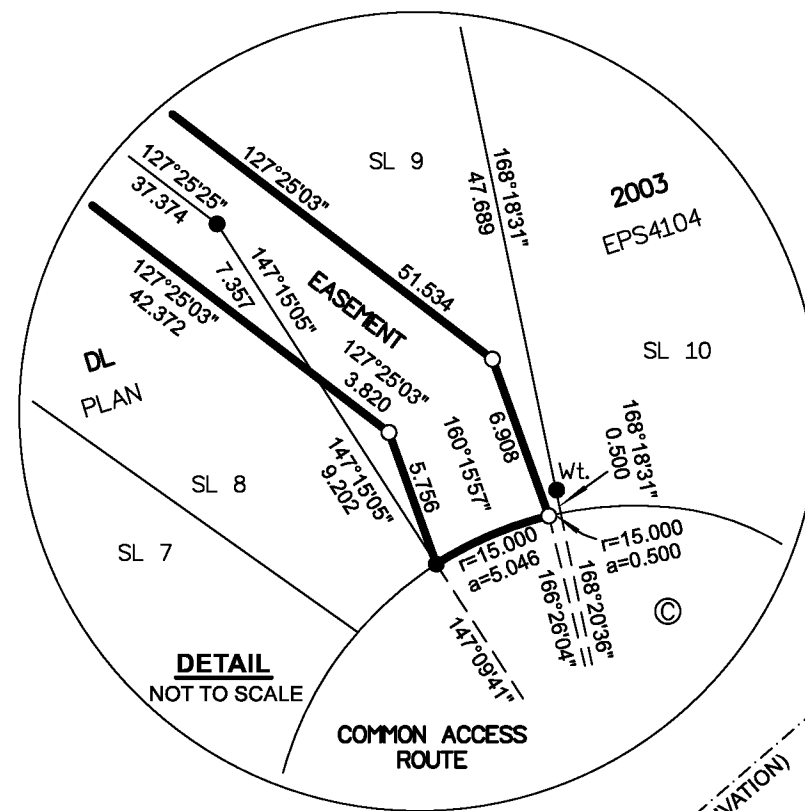
SOME POSTS AND LINES ARE EXAGGERATED FOR CLARITY.

LEGEND

SYMBOLS	DESCRIPTION
FOUND PLACED	
	CONTROL MONUMENT
	STANDARD IRON POST
	COMMON PROPERTY
CSF	COMBINED SCALE FACTOR
EAA	ESTIMATED ABSOLUTE ACCURACY

GEOREFERENCING POSITIONS				
UTM COORDINATES, ZONE 10, NAD 83 (CSRS) 4.0.0.BC.1				
STATION	NORTHING	EASTING	EAA	CSF
86H1670	5968403.30	513361.59	0.13	0.9994932
86H1722	5967972.13	512865.06	0.14	0.9994889

BOOK OF REFERENCE	
DESCRIPTION	AREA
LOT 1, PLAN 17334 PID: 011-491-663	AREA 1 = 0.168 ha
SL 8, PLAN EPS4104	AREA 2 = 99.6 m ²
SL 9, PLAN EPS4104	AREA 3 = 175.8 m ²
TOTAL AREA	0.196 ha



THE FIELD SURVEY REPRESENTED BY THIS PLAN WAS COMPLETED
ON THE 16th DAY OF JULY, 2019
SHAUNA C. GOERTZEN, BCLS 798

THIS PLAN LIES WITHIN THE REGIONAL DISTRICT OF FRASER-FORT GEORGE.

McElhanney
McELHANNEY ASSOCIATES
LAND SURVEYING LTD.
Suite 12
556 North Nechako Road
Prince George BC
Canada V2K 1A1
Tel 250 561 2229
File No. 2341-6521-E