

**SUBDIVISION PLAN OF LOT 1, PLAN EPP64576,  
LOT 44 AND PART OF LOT 47, PLAN EPP63574,  
ALL IN DISTRICT LOT 4376, CARIBOO DISTRICT.**

**PLAN EPP67523**

PURSUANT TO SECTION 67 OF LAND TITLE ACT

INTEGRATED SURVEY AREA No. 39 PRINCE GEORGE, BC, NAD83 (CSRS) 4.0.0.BC.1

BCGS 93G.097



THE INTENDED PLOT SIZE OF THIS PLAN IS 432 mm IN WIDTH BY 560 mm IN HEIGHT (C SIZE) WHEN PLOTTED AT A SCALE OF 1:500.

ALL DISTANCES ARE IN METRES AND DECIMALS THEREOF.

GRID BEARINGS ARE DERIVED FROM PREVIOUSLY INTEGRATED PLAN EPP64576.

THIS PLAN SHOWS HORIZONTAL GROUND-LEVEL DISTANCES UNLESS OTHERWISE SPECIFIED. TO COMPUTE GRID DISTANCES, MULTIPLY GROUND-LEVEL DISTANCES BY THE AVERAGE COMBINED FACTOR OF 0.9995111 WHICH HAS BEEN DERIVED FROM PLAN EPP64576.

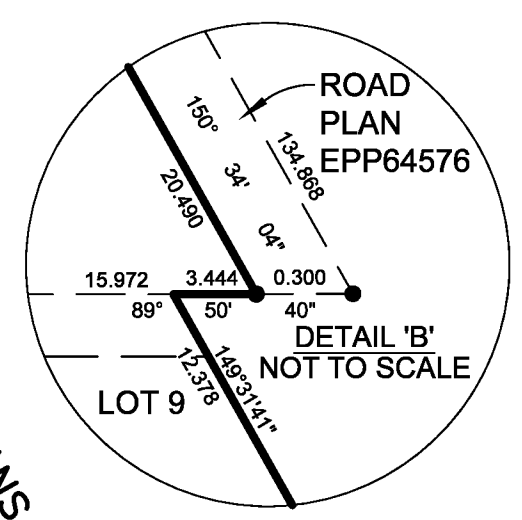
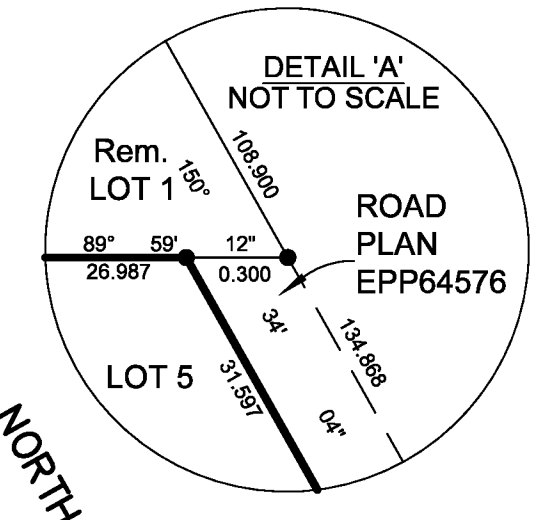
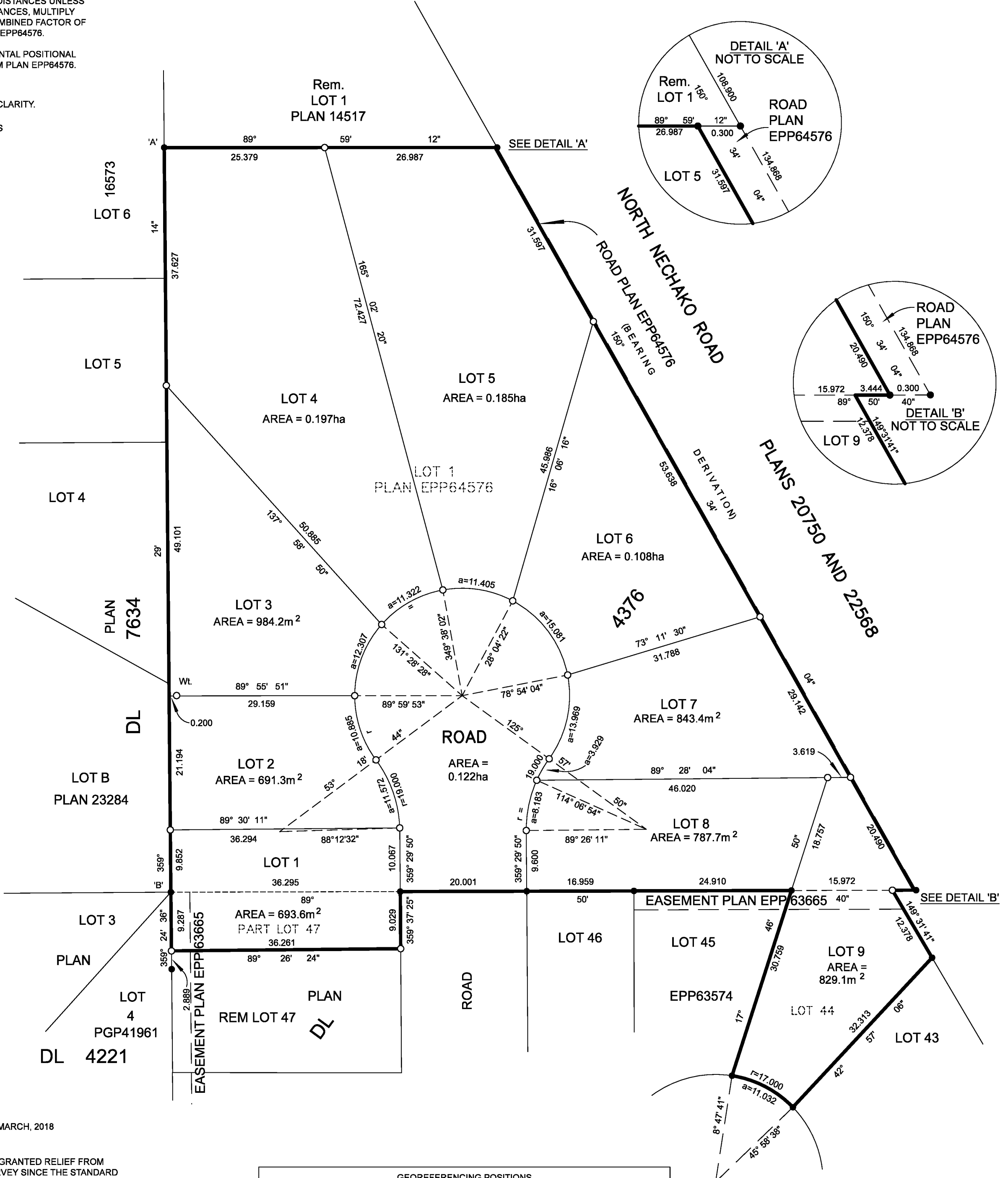
THE UTM COORDINATES AND ESTIMATED HORIZONTAL POSITIONAL ACCURACY ACHIEVED HAVE BEEN DERIVED FROM PLAN EPP64576.

NOTE:  
SOME POSTS AND LINE ARE EXAGGERATED FOR CLARITY.

THIS PLAN SHOWS ONE OR MORE WITNESS POSTS WHICH ARE NOT SET ON THE TRUE CORNER(S).

**LEGEND**

SYMBOLS	DESCRIPTION
FOUND	PLACED
●	○
● ○	STANDARD IRON POST



INSPECTED UNDER THE LAND TITLE ACT ON 23rd MARCH, 2018

THE ASSOCIATION OF BC LAND SURVEYORS HAS GRANTED RELIEF FROM COMPLIANCE WITH GSI RULE 5-4(2) FOR THIS SURVEY SINCE THE STANDARD DEVIATIONS OF THE ISA MONUMENTS DO NOT MEET THE REQUIREMENTS OF SAID RULE.

THIS PLAN LIES WITHIN THE JURISDICTION OF THE APPROVING OFFICER FOR THE CITY OF PRINCE GEORGE.

THE FIELD SURVEY REPRESENTED BY THIS PLAN WAS COMPLETED ON THE 25TH DAY OF OCTOBER, 2016  
SHAUNA C. GOERTZEN, BCLS 798

GEOREFERENCING POSITIONS UTM COORDINATES, ZONE 10, NAD 83 (CSRS), 4.0.0.BC.1				
STATION	NORTHING	EASTING	ESTIMATED HORIZONTAL POSITIONAL ACCURACY	COMBINED FACTOR
Fd.IP'A'	5977363.25	513442.83	0.12m	0.9995099
Fd.IP'B'	5977245.54	513443.88	0.12m	0.9995099

**McElhanney**  
McELHANNEY ASSOCIATES  
LAND SURVEYING LTD.  
Suite 12  
556 North Nechako Road  
Prince George BC  
Canada V2K 1A1  
Tel 250 561 2229  
File No. 2341-6462-S2

THIS PLAN LIES WITHIN THE REGIONAL DISTRICT OF FRASER-FORT GEORGE