

PLAN EPP67263

# STATUTORY RIGHT OF WAY PLAN OVER PART OF LOTS 4, 5, AND 6, DISTRICT LOT 748, CARIBOO DISTRICT, PLAN EPP67262

PURSUANT TO SECTION 113 OF THE LAND TITLE ACT.

INTEGRATED SURVEY AREA No. 39 PRINCE GEORGE, BC, NAD83 (CSRS), 4.0.0.BC.1

BCGS 93G.087



THE INTENDED PLOT SIZE OF THIS PLAN IS 560mm IN WIDTH BY 432mm IN HEIGHT (C SIZE) WHEN PLOTTED AT A SCALE OF 1:1250.

ALL DISTANCES ARE IN METRES AND DECIMALS THEREOF.

GRID BEARINGS ARE DERIVED FROM PREVIOUSLY INTEGRATED PLAN EPP67262.

THE UTM COORDINATES AND ESTIMATED HORIZONTAL POSITIONAL ACCURACY ACHIEVED HAVE BEEN DERIVED FROM PLAN EPP67262.

THIS PLAN SHOWS HORIZONTAL GROUND-LEVEL DISTANCES UNLESS OTHERWISE SPECIFIED. TO COMPUTE GRID DISTANCES, MULTIPLY GROUND-LEVEL DISTANCES BY THE AVERAGE COMBINED FACTOR OF 0.9995011 WHICH HAS BEEN DERIVED FROM PLAN EPP67262.

## LEGEND

SYMBOLS	DESCRIPTION
FOUND	PLACED
●	○
	STANDARD IRON POST

GEOREFERENCING POSITIONS UTM COORDINATES, ZONE 10, NAD 83 (CSRS), 4.0.0.BC.1				
STATION	NORTHING	EASTING	ESTIMATED HORIZONTAL POSITIONAL ACCURACY	COMBINED FACTOR
Fd.IP'A'	5967876.12	518504.32	0.10m	0.9995011
Fd.IP'B'	5967635.65	518744.25	0.10m	0.9995011

BOOK OF REFERENCE	
DESCRIPTION	AREA REQUIRED
LOT 4, DL 748, PLAN EPP67262	AREA 1 = 525.9m <sup>2</sup>
LOT 5, DL748, PLAN EPP67262	AREA 2 = 0.153ha
LOT 6, DL748, PLAN EPP67262	AREA 3 = 0.172ha
TOTAL AREA	0.378ha

INSPECTED UNDER THE LAND TITLE ACT ON THE 6th OF DECEMBER, 2017.

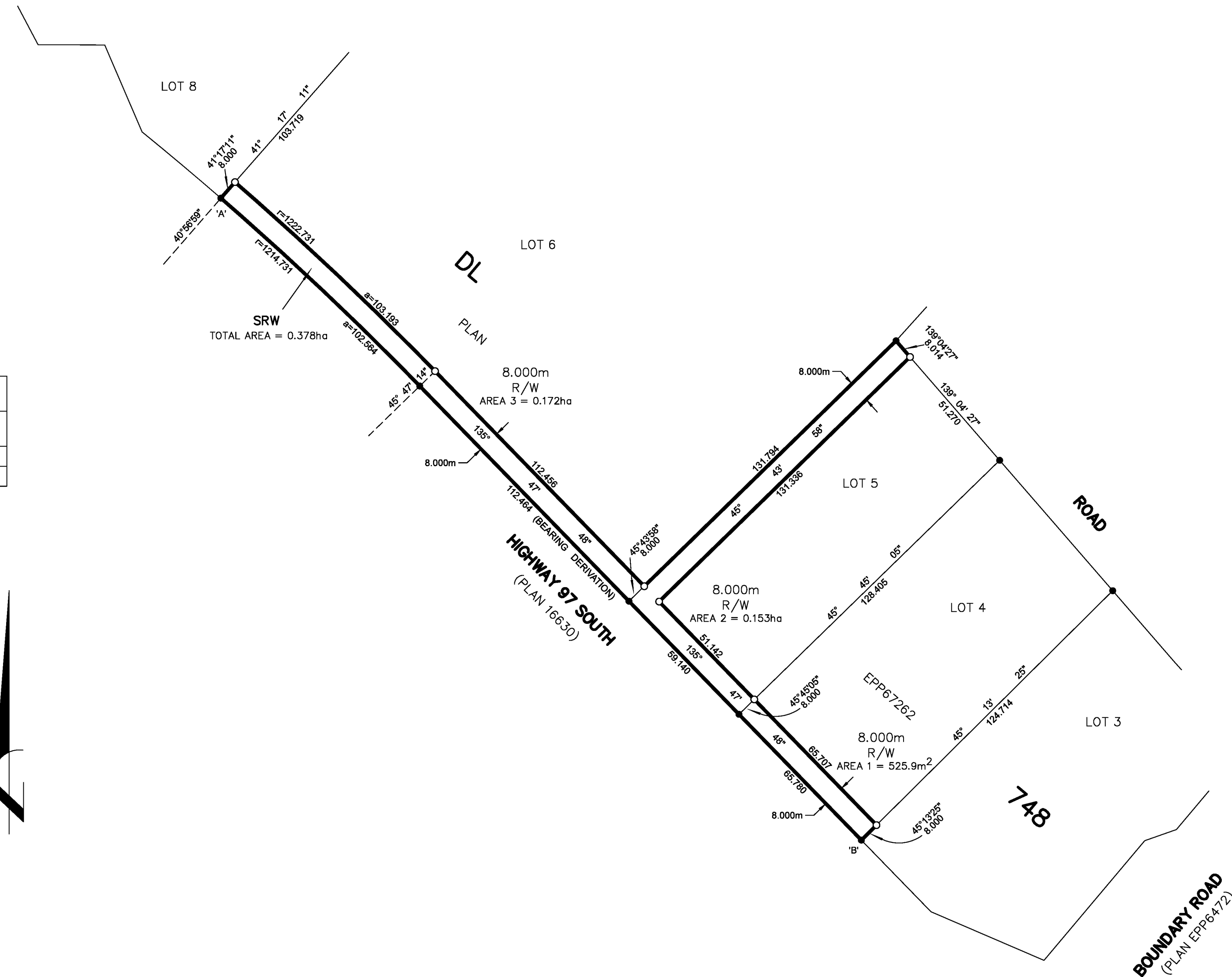
INSPECTED UNDER THE LAND TITLE ACT ON THE 18th OF APRIL, 2017.

THE ASSOCIATION OF BC LAND SURVEYORS HAS GRANTED RELIEF FROM COMPLIANCE WITH GSI RULE 5-4(2) FOR THIS SURVEY SINCE THE STANDARD DEVIATIONS OF THE ISA MONUMENTS DO NOT MEET THE REQUIREMENTS OF SAID RULE.

THIS PLAN LIES WITHIN THE JURISDICTION OF THE APPROVING OFFICER FOR THE CITY OF PRINCE GEORGE  
CPG FILE: SD100471.

THE FIELD SURVEY REPRESENTED BY THIS PLAN WAS COMPLETED ON THE 31st DAY OF OCTOBER, 2016  
SHAUNA C. GOERTZEN, BCLS 798

THIS PLAN LIES WITHIN THE REGIONAL DISTRICT OF FRASER-FORT GEORGE.



**BOUNDARY ROAD**  
(PLAN EPP6472)

**McElhanney**  
McELHANNEY ASSOCIATES  
LAND SURVEYING LTD.  
Suite 12  
558 North Nechako Road  
Prince George BC  
Canada V2K 1A1  
Tel 250 561 2229  
File No. 2341-6495-RW