

**SUBDIVISION PLAN OF BLOCK B, DISTRICT LOT 748, CARIBOO DISTRICT,  
EXCEPT PART IN PLAN EPP6472 AND EPP46674**

**PLAN EPP67262**

PURSUANT TO SECTION 67 OF THE LAND TITLE ACT

INTEGRATED SURVEY AREA No. 39 PRINCE GEORGE, BC, NAD83 (CSRS), 4.0.0.BC.1  
BCGS 93G.087



THE INTENDED PLOT SIZE OF THIS PLAN IS 864mm IN WIDTH BY 560mm IN HEIGHT (D SIZE) WHEN PLOTTED AT A SCALE OF 1:1250.

ALL DISTANCES ARE IN METRES AND DECIMALS THEREOF.

GRID BEARINGS ARE DERIVED FROM OBSERVATIONS BETWEEN GEODETIC CONTROL MONUMENTS 86H1724 AND 86H1758.

THE UTM COORDINATES AND ESTIMATED HORIZONTAL POSITIONAL ACCURACY ACHIEVED HAVE BEEN DERIVED FROM MASCOT PUBLISHED COORDINATES AND STANDARD DEVIATIONS FOR GEODETIC CONTROL MONUMENT 86H1758.

THIS PLAN SHOWS HORIZONTAL GROUND-LEVEL DISTANCES UNLESS OTHERWISE SPECIFIED. TO COMPUTE GRID DISTANCES, MULTIPLY GROUND-LEVEL DISTANCES BY THE AVERAGE COMBINED FACTOR OF 0.9995011 WHICH HAS BEEN DERIVED BY SINGLE POINT POSITIONING TECHNIQUES USING THE PRECISE POINT POSITIONING (PPP)/SERVICE OF NATURAL RESOURCES CANADA.

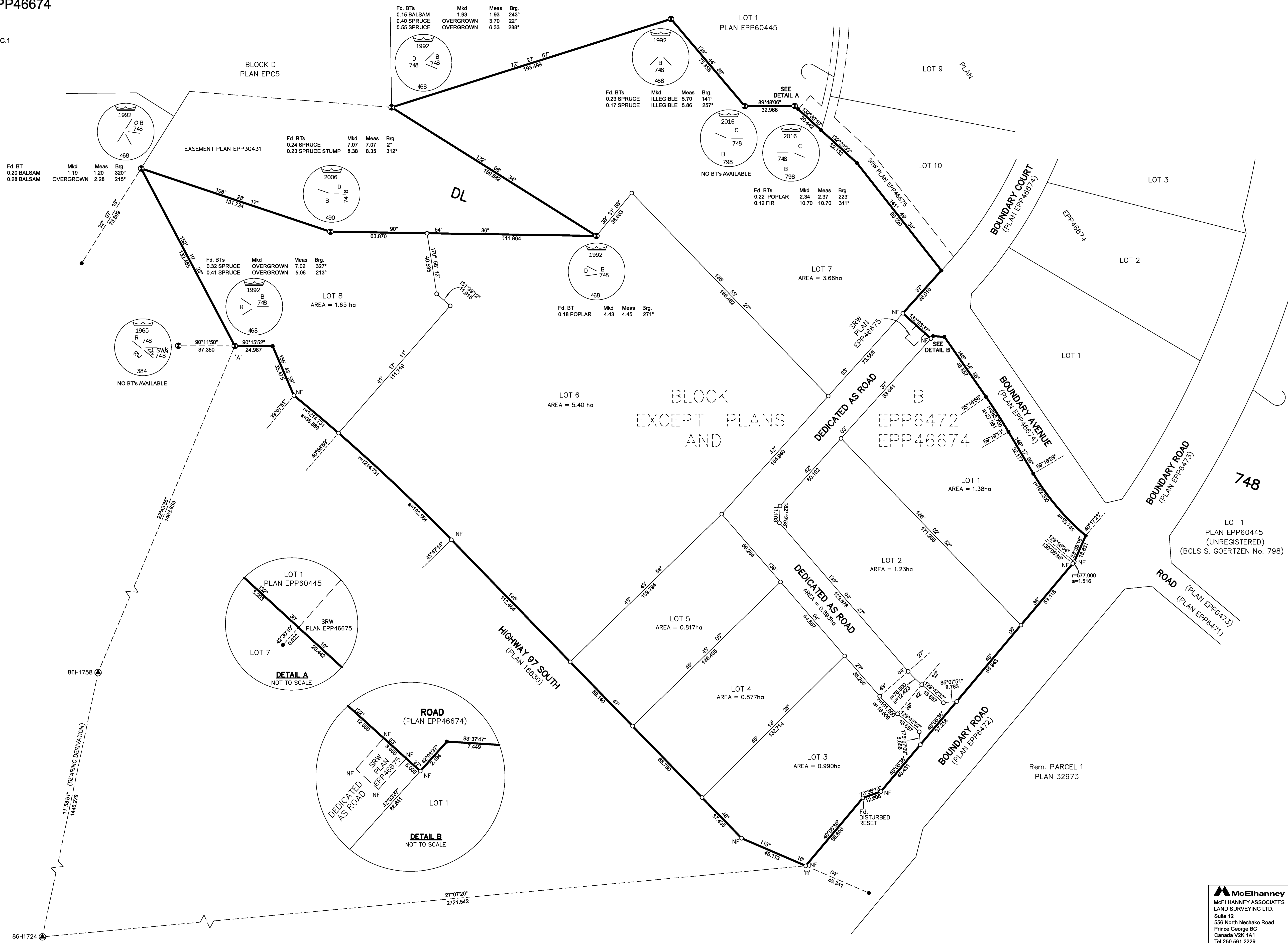
BEARINGS TO BEARING TREES ARE MAGNETIC.

NOTE: SOME POSTS AND LINES ARE EXAGGERATED FOR CLARITY.

**LEGEND**

SYMBOLS	DESCRIPTION
FOUND	PLACED
	CONTROL MONUMENT
	STANDARD CAPPED POST
	STANDARD IRON POST

GEOREFERENCING POSITIONS				
UTM COORDINATES, ZONE 10, NAD 83 (CSRS), 4.0.0.BC.1				
STATION	NORTHING	EASTING	ESTIMATED HORIZONTAL POSITIONAL ACCURACY	COMBINED FACTOR
Fd.CP'A	5987933.60	518435.84	0.10m	0.9995011
PLIP'B	5967590.62	518812.67	0.10m	0.9995011



INSPECTED UNDER THE LAND TITLE ACT ON THE 6th OF DECEMBER, 2017.

INSPECTED UNDER THE LAND TITLE ACT ON THE 18th OF APRIL, 2017.

THE ASSOCIATION OF BC LAND SURVEYORS HAS GRANTED RELIEF FROM COMPLIANCE WITH GSI RULE 5-4(2) FOR THIS SURVEY SINCE THE STANDARD DEVIATIONS OF THE ISA MONUMENTS DO NOT MEET THE REQUIREMENTS OF SAID RULE.

THIS PLAN LIES WITHIN THE JURISDICTION OF THE APPROVING OFFICER FOR THE CITY OF PRINCE GEORGE CPG FILE: SD100471.

THE FIELD SURVEY REPRESENTED BY THIS PLAN WAS COMPLETED ON THE 31st DAY OF OCTOBER, 2016  
SHAUNA C. GOERTZEN, BCLS 798

THIS PLAN LIES WITHIN THE REGIONAL DISTRICT OF FRASER-FORT GEORGE.

**McElhanney**  
McELHANNEY ASSOCIATES  
LAND SURVEYING LTD.  
Suite 12  
556 North Nechako Road  
Prince George BC  
Canada V2K 1A1  
Tel 250 561 2229  
File No. 2341-6495-S

Status: Filed  
Plan #: EPP67262 App #: CA6539121 Ctl #: 151-262-4945  
RCVD: 2017-12-29 ROST: 2018-02-20 15:01:38