

# REFERENCE PLAN OF CONSOLIDATION OF LOTS 1 TO 6, INCLUSIVE, BLOCK 21, DISTRICT LOT 905, CARIBOO DISTRICT, PLAN 1223.

PLAN EPP67159

PURSUANT TO SECTION 100(1)(b) OF THE LAND TITLE ACT.

INTEGRATED SURVEY AREA No. 39 PRINCE GEORGE, BC, NAD83 (CSRS) 4.0.0.BC.1

BCGS 93G.087



THE INTENDED PLOT SIZE OF THIS PLAN IS 560 mm IN WIDTH BY 432 mm IN HEIGHT (C SIZE) WHEN PLOTTED AT A SCALE OF 1:750.

ALL DISTANCES ARE IN METRES AND DECIMALS THEREOF.

GRID BEARINGS ARE DERIVED FROM OBSERVATIONS BETWEEN GEODETIC CONTROL MONUMENTS 86H1832 AND 86H1829.

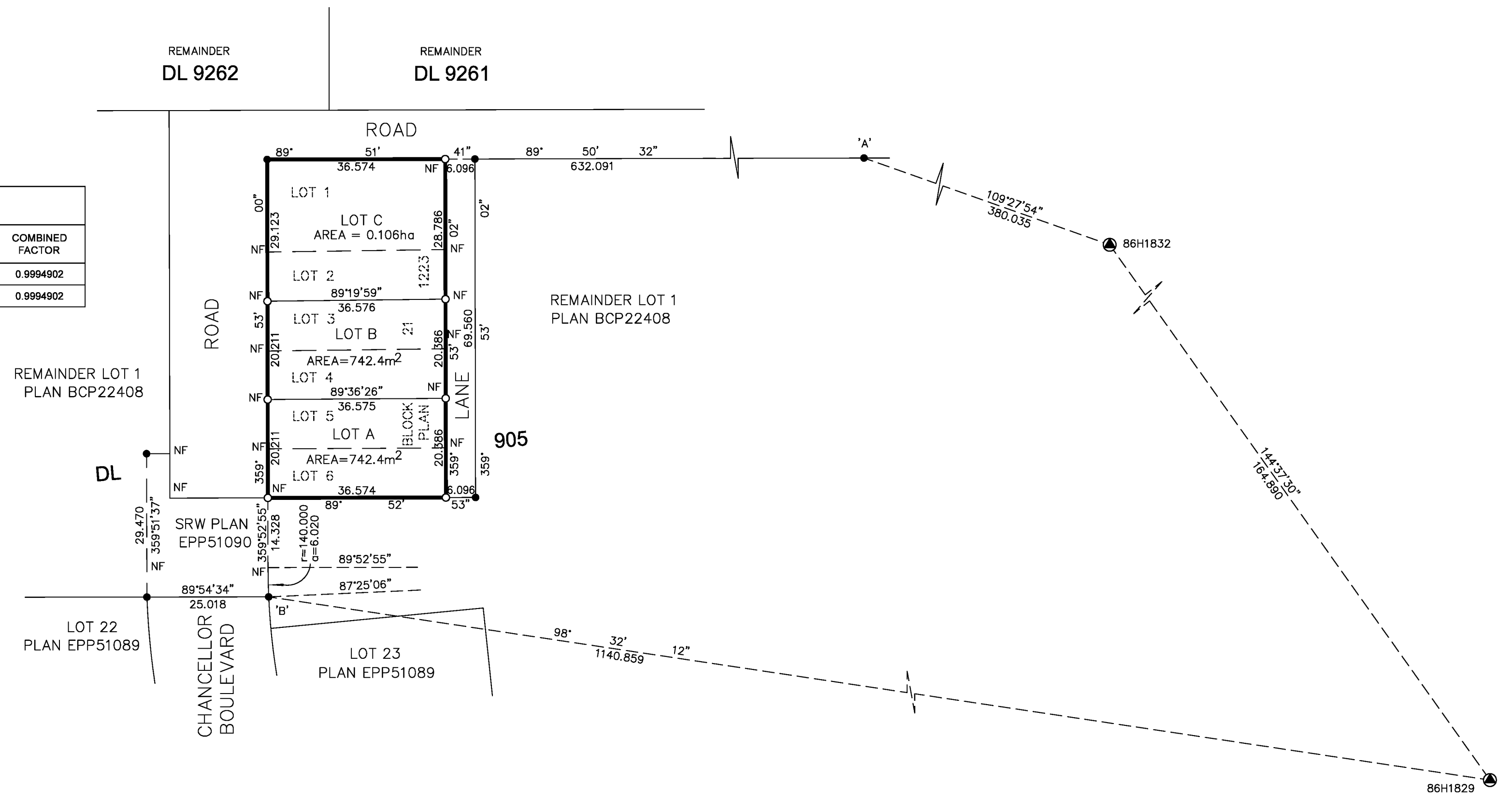
THIS PLAN SHOWS HORIZONTAL GROUND-LEVEL DISTANCES UNLESS OTHERWISE SPECIFIED. TO COMPUTE GRID DISTANCES, MULTIPLY GROUND-LEVEL DISTANCES BY THE AVERAGE COMBINED FACTOR OF 0.9995034 WHICH HAS BEEN DERIVED FROM GEODETIC CONTROL MONUMENTS 86H1832 AND 86H1829.

THE UTM COORDINATES AND ESTIMATED HORIZONTAL POSITIONAL ACCURACY ACHIEVED HAVE BEEN DERIVED FROM NATURAL RESOURCES CANADA PRECISE POINT POSITIONING SERVICE.

## LEGEND

SYMBOLS		DESCRIPTION
FOUND	PLACED	
		CONTROL MONUMENT
		STANDARD IRON POST

GEOREFERENCING POSITIONS				
UTM COORDINATES, ZONE 10, NAD 83 (CSRS), 2002.0				
STATION	NORTHING	EASTING	ESTIMATED HORIZONTAL POSITIONAL ACCURACY	COMBINED FACTOR
Fd.IP'A	5969825.61	513948.68	0.05m	0.9994902
Fd.IP'B	5969733.92	513274.57	0.05m	0.9994902



THE FIELD SURVEY REPRESENTED BY THIS PLAN WAS COMPLETED ON THE 14TH DAY OF OCTOBER, 2016  
SHAUNA C. GOERTZEN, BCLS 798

THIS PLAN LIES WITHIN THE REGIONAL DISTRICT OF FRASER-FORT GEORGE

**McElhanney**  
McELHANNEY ASSOCIATES  
LAND SURVEYING LTD.  
Suite 12  
556 North Nechako Road  
Prince George BC  
Canada V2K 1A1  
Tel 250 561 2229

File No. 2341-6503-CON