

REFERENCE PLAN OF COVENANT OVER PART OF LOT 78, DISTRICT LOT 8171 AND 8172, CARIBOO DISTRICT, PLAN 18944.

PLAN EPP66820

PURSUANT TO SECTION 99(1)(e) OF THE LAND TITLE ACT.
FOR COVENANT PURPOSES

INTEGRATED SURVEY AREA No. 39 PRINCE GEORGE, BC

BCGS 93G.087



THE INTENDED PLOT SIZE OF THIS PLAN IS 560 mm IN WIDTH BY 432 mm IN HEIGHT (C SIZE) WHEN PLOTTED AT A SCALE OF 1:750.

ALL DISTANCES ARE IN METRES AND DECIMALS THEREOF.

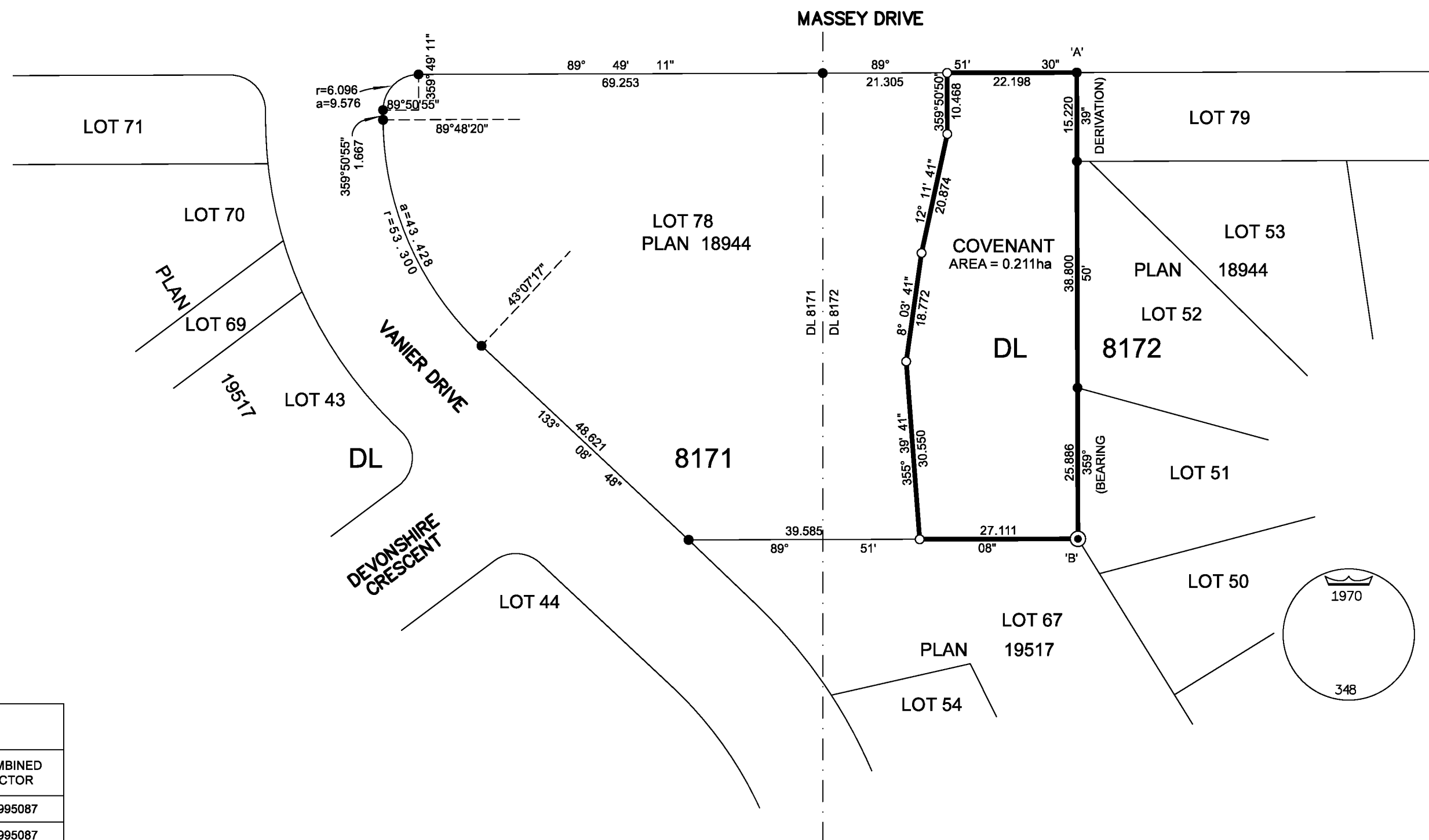
GRID BEARINGS ARE DERIVED FROM PREVIOUSLY INTEGRATED PLAN EPP66819.

THE UTM COORDINATES AND ESTIMATED HORIZONTAL POSITIONAL ACCURACY ACHIEVED HAVE BEEN DERIVED FROM PREVIOUSLY INTEGRATED PLAN EPP66819.

THIS PLAN SHOWS HORIZONTAL GROUND-LEVEL DISTANCES UNLESS OTHERWISE SPECIFIED. TO COMPUTE GRID DISTANCES, MULTIPLY GROUND-LEVEL DISTANCES BY THE AVERAGE COMBINED FACTOR OF 0.9995109 WHICH HAS BEEN DERIVED FROM CONTROL MONUMENTS 85H1131 AND 85H1135.

LEGEND

SYMBOLS		DESCRIPTION
FOUND	PLACED	
●	○	STANDARD IRON POST
⊙		STANDARD CONCRETE POST



GEOREFERENCING POSITIONS UTM COORDINATES, ZONE 10, NAD 83 (CSRS), 4.0.0.BC.1				
STATION	NORTHING	EASTING	ESTIMATED HORIZONTAL POSITIONAL ACCURACY	COMBINED FACTOR
Fd.IP'A'	5972351.30	514127.35	0.07m	0.9995087
Fd.PCON'B'	5972271.43	514127.56	0.07m	0.9995087

THE FIELD SURVEY REPRESENTED BY THIS PLAN WAS COMPLETED ON THE 27TH DAY OF SEPTEMBER, 2016
SHAUNA C. GOERTZEN, BCLS 798

THIS PLAN LIES WITHIN THE REGIONAL DISTRICT OF FRASER-FORT GEORGE

McElhanney
McELHANNEY ASSOCIATES
LAND SURVEYING LTD.
Suite 12
556 North Nechako Road
Prince George BC
Canada V2K 1A1
Tel 250 561 2229

File No. 2341-6494-COV