

# SUBDIVISION PLAN OF PART OF LOT 78, DISTRICT LOT 8171 AND 8172, CARIBOO DISTRICT, PLAN 18944.

PLAN EPP66819

PURSUANT TO SECTION 67 OF LAND TITLE ACT

INTEGRATED SURVEY AREA No. 39 PRINCE GEORGE, BC

BCGS 93G.087



THE INTENDED PLOT SIZE OF THIS PLAN IS 560 mm IN WIDTH BY 432 mm IN HEIGHT (C SIZE) WHEN PLOTTED AT A SCALE OF 1:750.

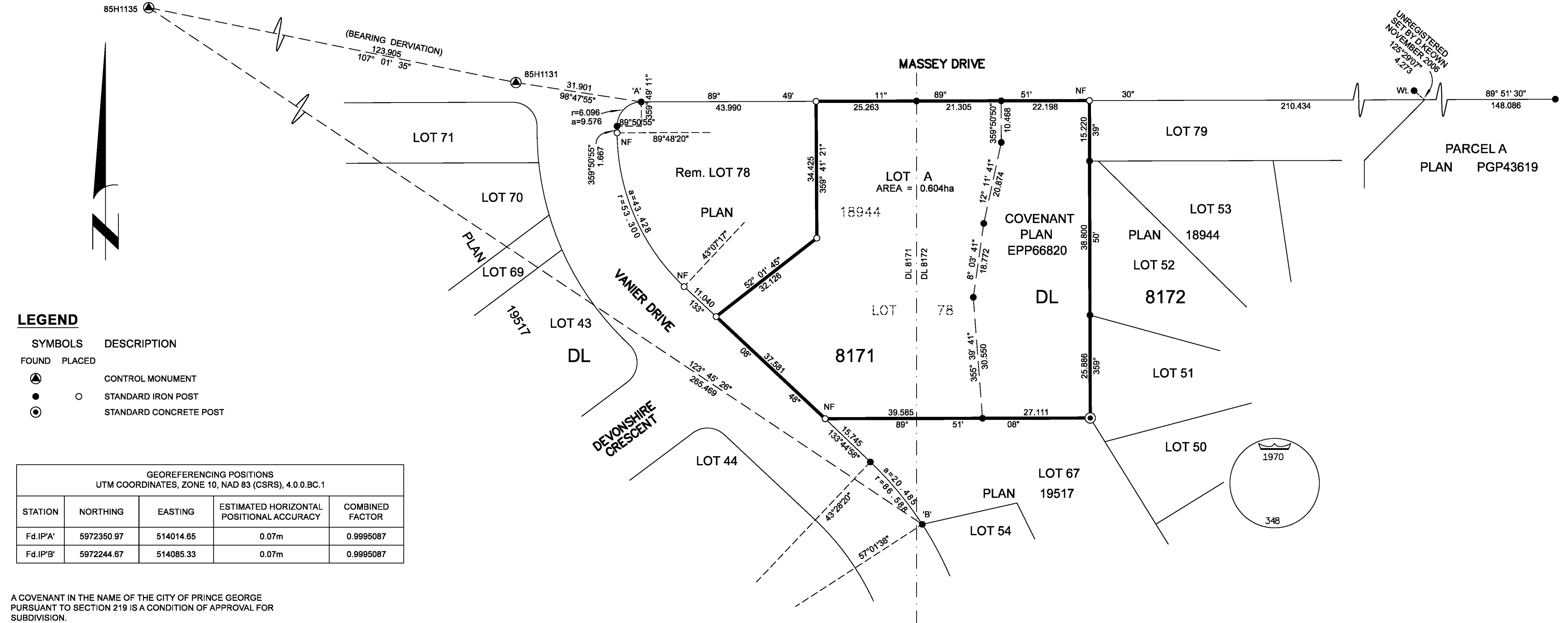
ALL DISTANCES ARE IN METRES AND DECIMALS THEREOF.

GRID BEARINGS ARE DERIVED FROM OBSERVATIONS BETWEEN GEODETIC CONTROL MONUMENTS 85H1131 AND 85H1135.

THE UTM COORDINATES AND ESTIMATED HORIZONTAL POSITIONAL ACCURACY ACHIEVED HAVE BEEN DERIVED FROM MASCOT PUBLISHED COORDINATES AND STANDARD DEVIATIONS FOR GEODETIC CONTROL MONUMENTS 85H1131 AND 85H1135.

THIS PLAN SHOWS HORIZONTAL GROUND-LEVEL DISTANCES UNLESS OTHERWISE SPECIFIED. TO COMPUTE GRID DISTANCES, MULTIPLY GROUND-LEVEL DISTANCES BY THE AVERAGE COMBINED FACTOR OF 0.9995109 WHICH HAS BEEN DERIVED FROM CONTROL MONUMENTS 85H1131 AND 85H1135.

NOTE:  
THIS PLAN SHOWS ONE OR MORE WITNESS POSTS WHICH ARE NOT SET ON THE TRUE CORNER(S).  
SOME POSTS ARE EXAGGERATED FOR CLARITY.



**LEGEND**

SYMBOLS		DESCRIPTION
FOUND	PLACED	
		CONTROL MONUMENT
		STANDARD IRON POST
		STANDARD CONCRETE POST

GEOREFERENCING POSITIONS				
UTM COORDINATES, ZONE 10, NAD 83 (CSRS), 4.0.0.BC.1				
STATION	NORTHING	EASTING	ESTIMATED HORIZONTAL POSITIONAL ACCURACY	COMBINED FACTOR
Fd.IP'A'	5972350.97	514014.65	0.07m	0.9995087
Fd.IP'B'	5972244.67	514085.33	0.07m	0.9995087

A COVENANT IN THE NAME OF THE CITY OF PRINCE GEORGE PURSUANT TO SECTION 219 IS A CONDITION OF APPROVAL FOR SUBDIVISION.

THIS PLAN LIES WITHIN THE JURISDICTION OF THE APPROVING OFFICER FOR THE CITY OF PRINCE GEORGE.

INSPECTED UNDER THE LAND TITLE ACT ON THE 2nd DAY OF APRIL, 2018.

THE FIELD SURVEY REPRESENTED BY THIS PLAN WAS COMPLETED ON THE 27TH DAY OF SEPTEMBER, 2016  
SHAUNA C. GOERTZEN, BCLS 798

THIS PLAN LIES WITHIN THE REGIONAL DISTRICT OF FRASER-FORT GEORGE

UNREGISTERED SET BY D. JACOBSON NOVEMBER 2008 125°29'07" 4.273

PARCEL A  
PLAN PGP43619

**McElhanney**  
McELHANNEY ASSOCIATES  
LAND SURVEYING LTD.  
Suite 12  
556 North Nechako Road  
Prince George BC  
Canada V2K 1A1  
Tel 250 561 2229

File No. 2341-6494-S